



ROBINSON SERVICES

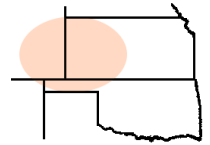
Oil Field & Construction Staking

P.O. Box 2324

Garden City, Kansas 67846

Office/Fax: (620) 276-6159

Cell: (620) 272-1499



c071809-s
PLAT NO.

8281
INVOICE NO.

Raydon Exploration, Inc

OPERATOR

Seward County, KS

COUNTY

23 **32s** **32w**
Sec. Twp. Rng.

McBride #5-23

LEASE NAME

2310' FNL - 990' FWL

LOCATION SPOT

SCALE: 1" = 1000'

DATE: July 13th, 2009

MEASURED BY: Gabe Q.

DRAWN BY: Gabe Q.

AUTHORIZED BY: David R.

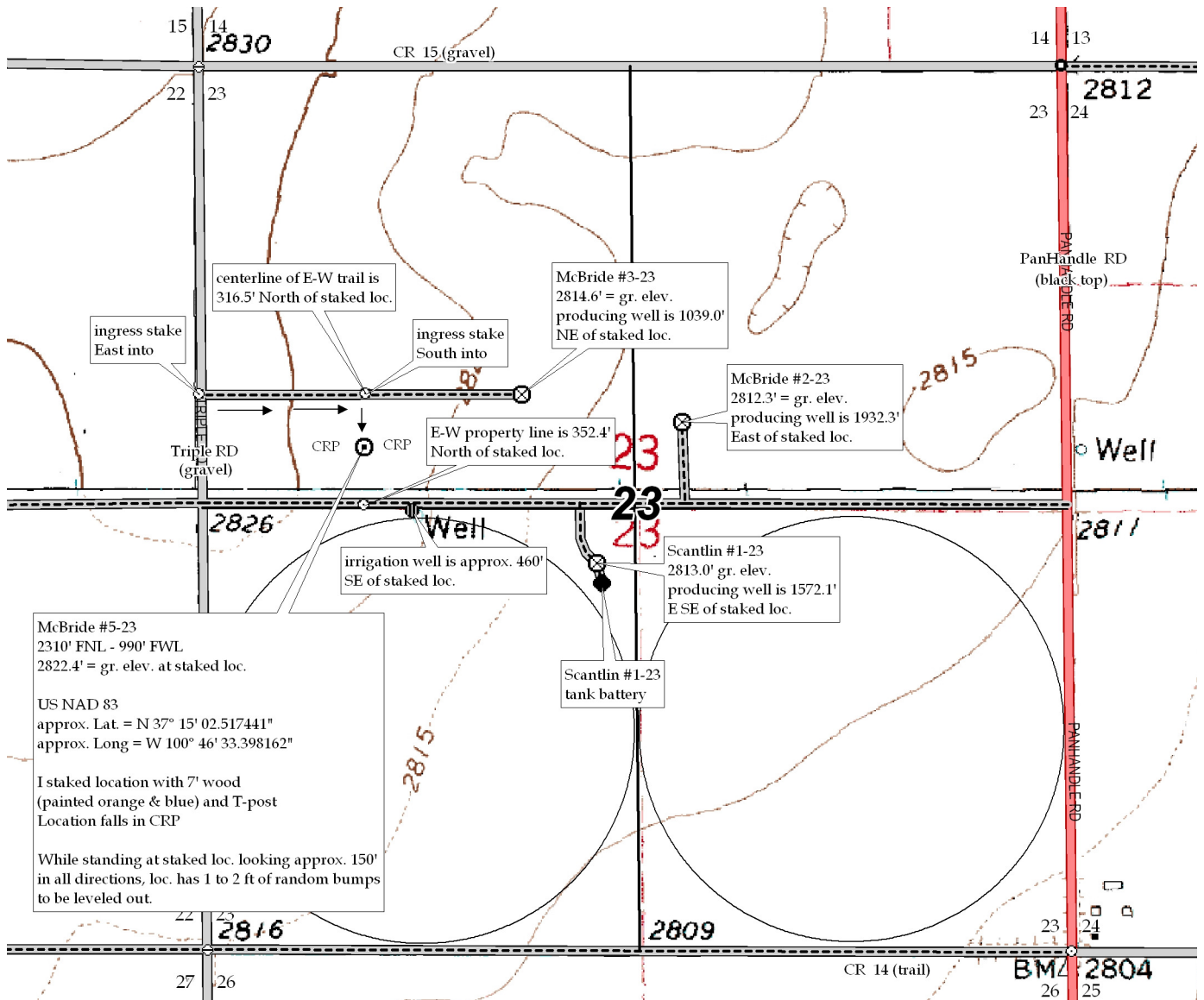


GR. ELEVATION: 2822.4'

Directions: From approx. 1 mile NE of Plains, Ks at the intersection of Hwy 54 & Hwy 160 West - Now go 12 miles West on Hwy 160 - Now go 1 mile South on Triple RD to the NW corner of section 23-32s-32w - Now go 1 mile on Triple RD to ingress stake East into - Now go 0.2 mile East on trail to ingress stake South into - Now go 317' South through CRP into staked location.

Final ingress must be verified with land owner or Raydon Exploration, Inc.

This drawing does not constitute a monumented survey or a land survey plat
This drawing is for construction purposes only



McBride #5-23
2310' FNL - 990' FWL
2822.4' = gr. elev. at staked loc.

US NAD 83
approx. Lat. = N 37° 15' 02.517441"
approx. Long = W 100° 46' 33.398162"

I staked location with 7' wood
(painted orange & blue) and T-post
Location falls in CRP

While standing at staked loc. looking approx. 150'
in all directions, loc. has 1 to 2 ft of random bumps
to be leveled out.