



ROBINSON SERVICES

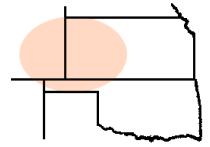
Oil Field & Construction Staking

P.O. Box 2324

Garden City, Kansas 67846

Office/Fax: (620) 276-6159

Cell: (620) 272-1499



m072109-1
PLAT NO.

8289
INVOICE NO.

American Warrior

OPERATOR

Ness County, KS

COUNTY

1 **19s** **22w**
Sec. Twp. Rng.

Moore #3-1

LEASE NAME

1850' FNL - 720' FEL

LOCATION SPOT

Prospect ???

PROSPECT

SCALE: 1" = 1000'
DATE STAKED: July 20th, 2009
MEASURED BY: Burt W.
DRAWN BY: Gabe Q.
AUTHORIZED BY: Cecil O.

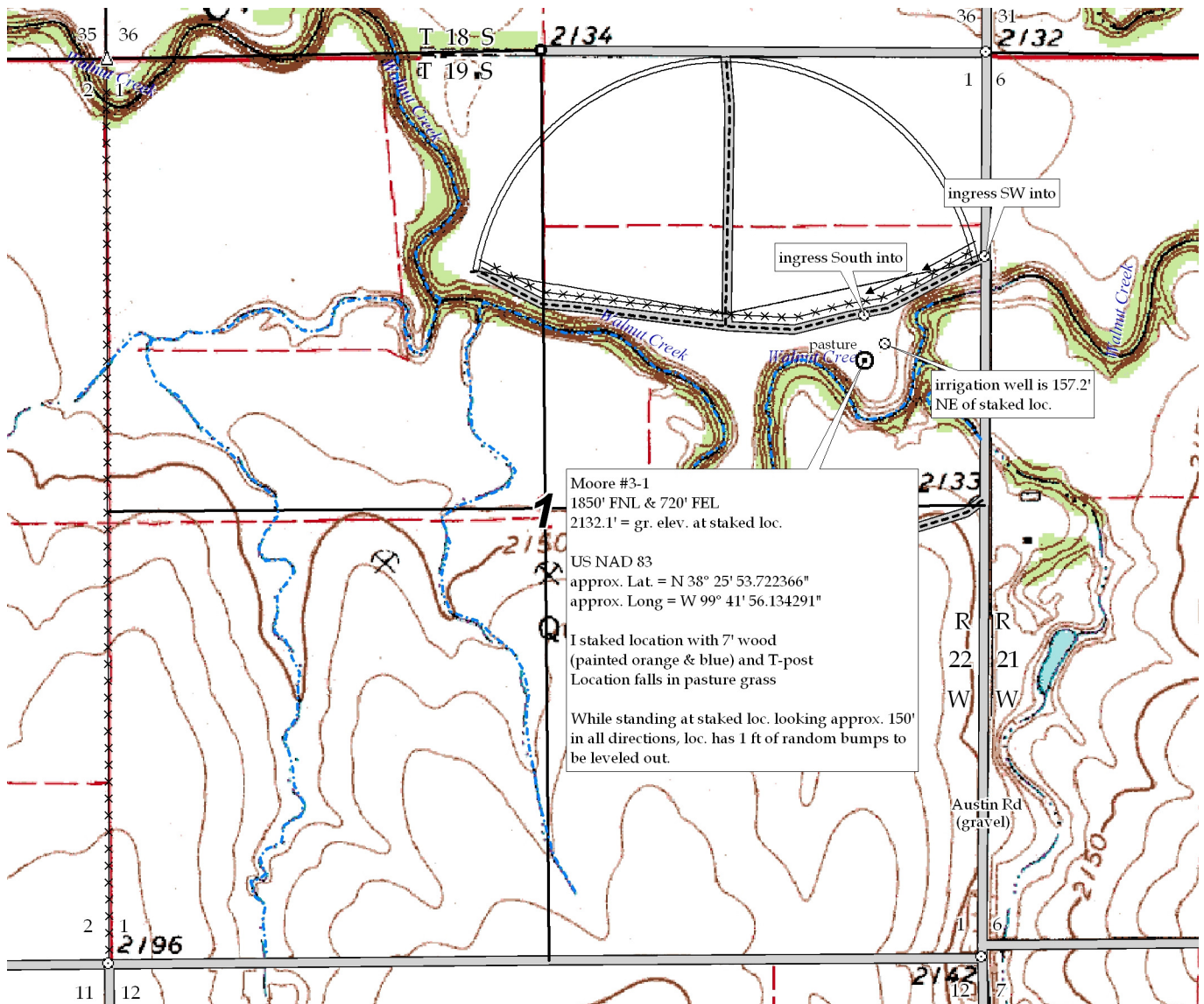


GR. ELEVATION: **2132.1'**

Directions: From the North side of Bazine, Ks at the intersection Hwy 96 & Main St. South - Now go 0.7 mile South on Main St. - Now go 0.3 mile West on Repine Ave. - Now go 0.2 mile South on Austin RD to the NE corner of section 1-19s-22w - Now go 0.2 mile on South on Austin RD - Now go approx. 780' or 0.2 mile SW on North side of fence through unknown crop - Now go approx. 360' South through pasture grass into staked location.

Final ingress must be verified with land owner or American Warrior

This drawing does not constitute a monumented survey or a land survey plat
This drawing is for construction purposes only



Moore #3-1
1850' FNL & 720' FEL
2132.1' = gr. elev. at staked loc.
US NAD 83
approx. Lat. = N 38° 25' 53.722366"
approx. Long = W 99° 41' 56.134291"
I staked location with 7' wood
(painted orange & blue) and T-post
Location falls in pasture grass
While standing at staked loc. looking approx. 150'
in all directions, loc. has 1 ft of random bumps to
be leveled out.