



# ROBINSON SERVICES

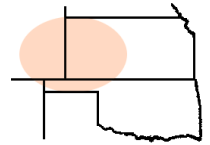
Oil Field & Construction Staking

P.O. Box 2324

Garden City, Kansas 67846

Office/Fax: (620) 276-6159

Cell: (620) 272-1499



**k072209-m**  
PLAT NO.

**8300**  
INVOICE NO.

## American Warrior

OPERATOR

## Ness County, KS

COUNTY

**1**      **19s**      **22w**  
Sec.      Twp.      Rng.

## Kuehn #3-1

LEASE NAME

**648' FSL - 990' FEL**

LOCATION SPOT

**Prospect ???**

PROSPECT

SCALE: 1" = 1000'  
DATE STAKED: July 20<sup>th</sup>, 2009  
MEASURED BY: Burt W.  
DRAWN BY: Gabe Q.  
AUTHORIZED BY: Cecil O.

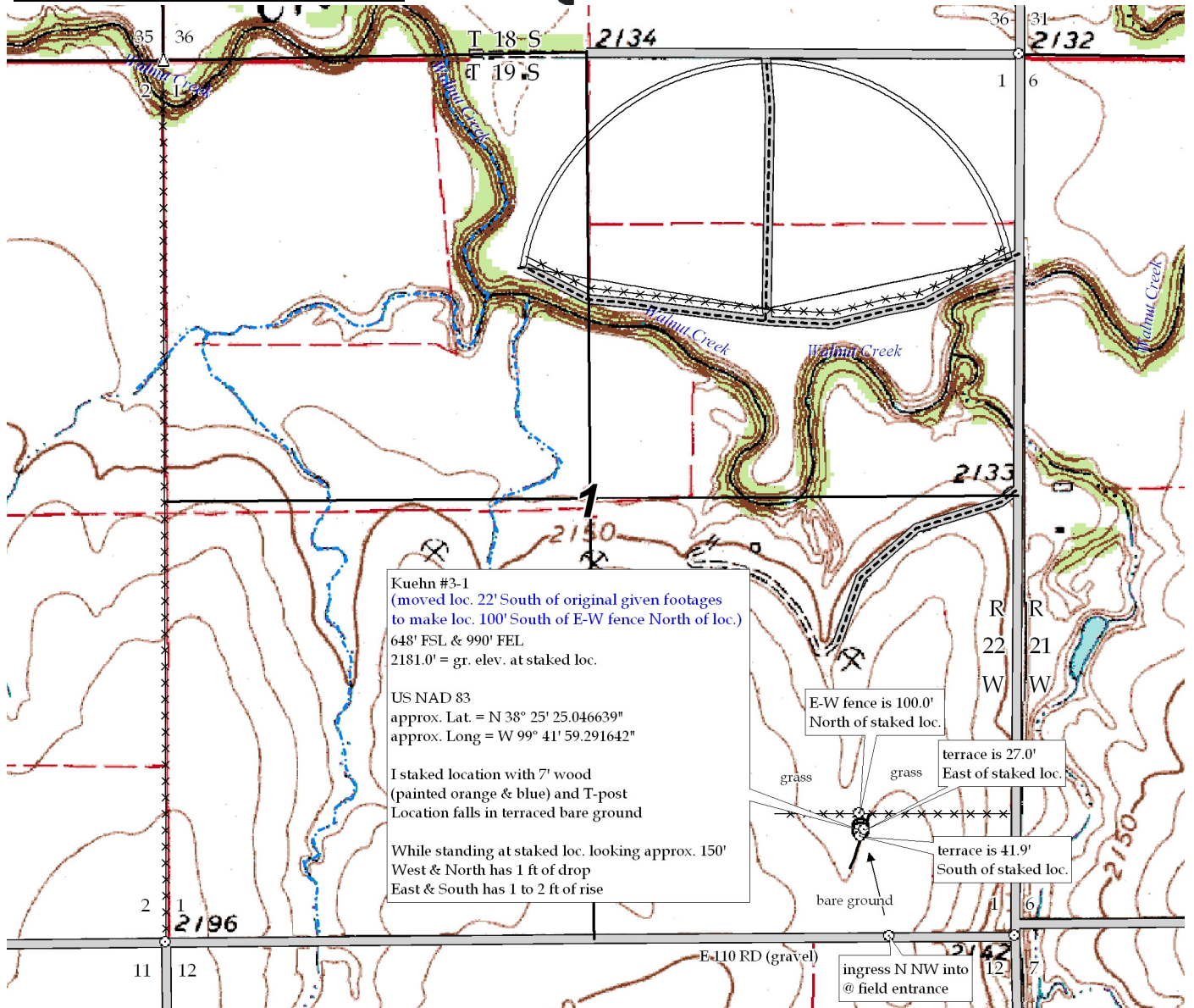


GR. ELEVATION: **2181.0'**

**Directions:** From the North side of Bazine, Ks at the intersection Hwy 96 & Main St. South - Now go 0.7 mile South on Main St. - Now go 0.3 mile West on Repine Ave. - Now go 1.2 mile South on Austin Rd to the SE corner of section 1-19s-22w - Now go 0.2 mile West on E 110 Rd to field entrance - Now go approx. 680' N NW through bare ground into staked location.

**Final ingress must be verified with land owner or American Warrior**

*This drawing does not constitute a monumented survey or a land survey plat*  
*This drawing is for construction purposes only*



Kuehn #3-1  
(moved loc. 22' South of original given footages to make loc. 100' South of E-W fence North of loc.)  
648' FSL & 990' FEL  
2181.0' = gr. elev. at staked loc.  
  
US NAD 83  
approx. Lat. = N 38° 25' 25.046639"  
approx. Long = W 99° 41' 59.291642"  
  
I staked location with 7' wood (painted orange & blue) and T-post  
Location falls in terraced bare ground  
  
While standing at staked loc. looking approx. 150'  
West & North has 1 ft of drop  
East & South has 1 to 2 ft of rise

E-W fence is 100.0'  
North of staked loc.  
  
grass      grass  
terrace is 27.0'  
East of staked loc.  
  
terrace is 41.9'  
South of staked loc.  
  
bare ground

ingress N NW into @ field entrance