

ADVANTAGE ELEVATIONS

OIL FIELD SURVEYORS

BOX 8604 - PRATT, KS 67124
(620) 672-6491

720091
INVOICE NO.

VINCENT OIL CORPORATION
OPERATOR

1-33
NO

Blenner
FARM

Ford COUNTY .33 S 25s T 24w R

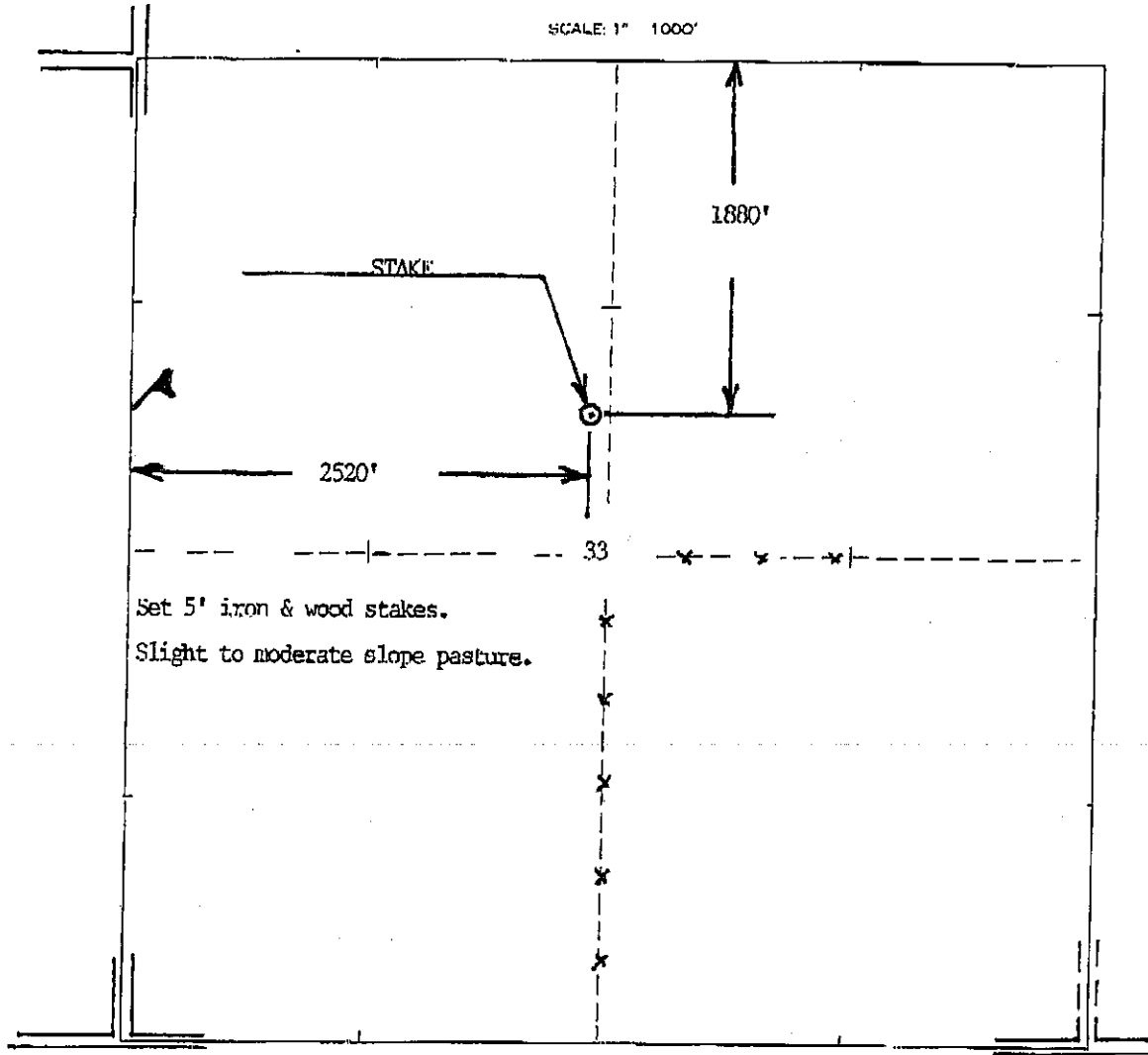
1880' FNL & 2520' FWL
LOCATION

ELEVATION: 2485' gr



VINCENT OIL CORPORATION
155 N Market St Ste 700
Wichita KS 67202

AUTHORIZED BY: M. J. Korpheg



Staked 07/20/09