



**ADVANTAGE  
ELEVATIONS**

OIL FIELD SURVEYORS

BOX 8604 - PRATT, KS 67124  
(620) 672-6491

84091

INVOICE NO

FALCON EXPLORATION INC

OPERATOR

1-31

NO.

YBC  
YNC NE

FARM

Clark

COUNTY

31

S

30s

T

22w

R

2480' FNL & 370' FEL

LOCATION

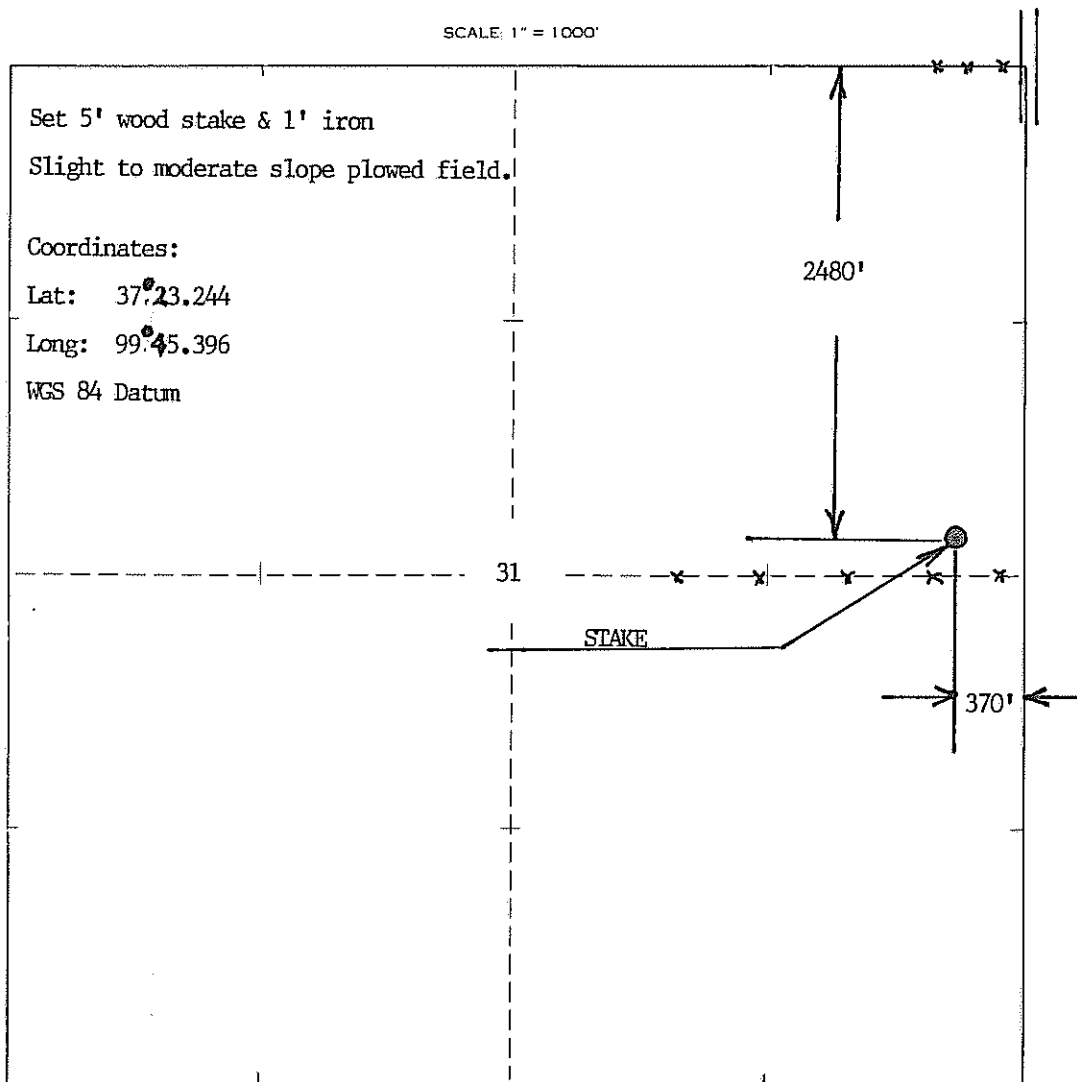
ELEVATION: 2431' gr



FALCON EXPLORATION INC  
125 N Market ST Ste 1252  
Wichita KS 67202

AUTHORIZED BY: Jason Mitchell

SCALE: 1" = 1000'



Staked 08/04/09