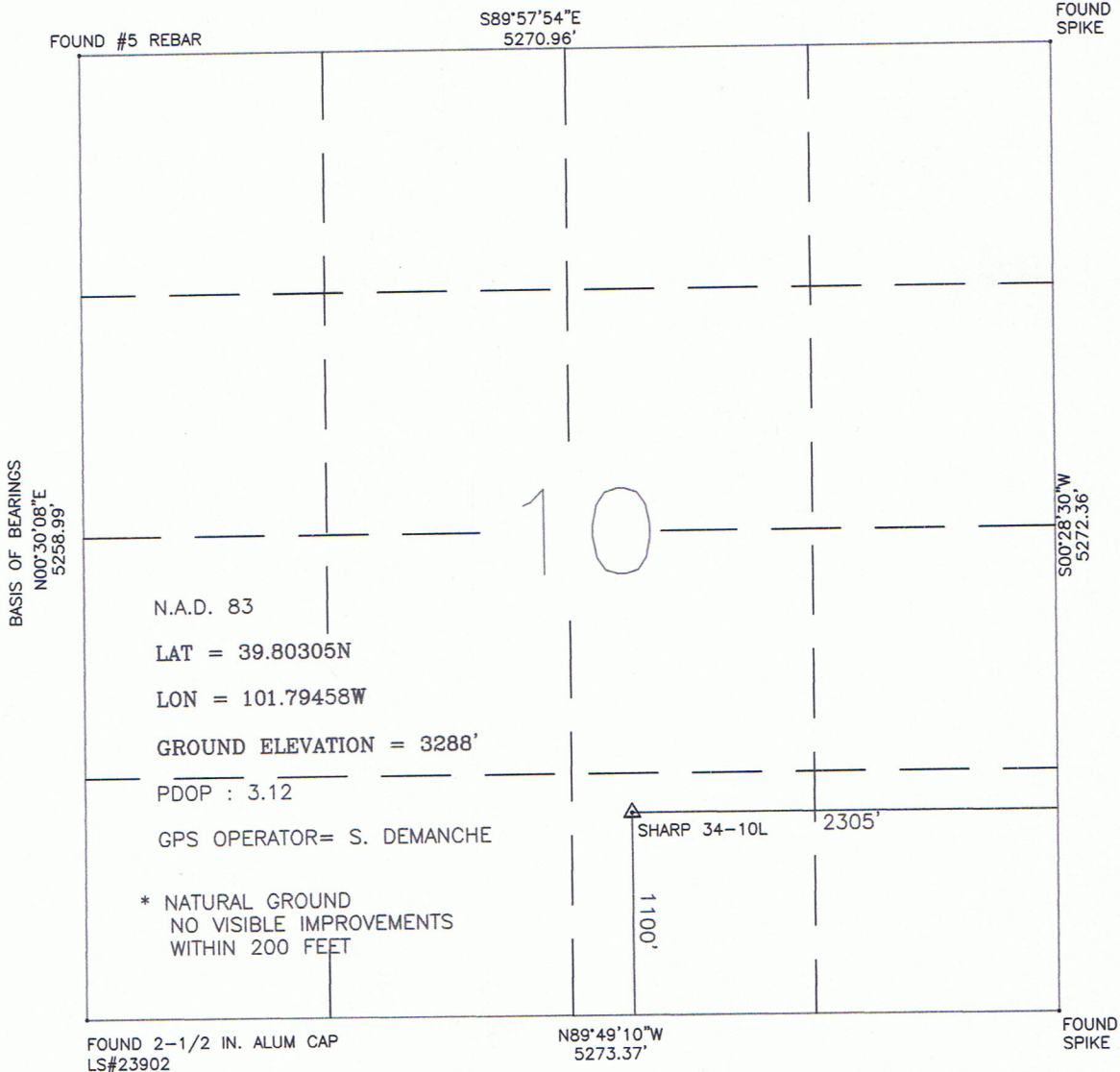


# WELL LOCATION CERTIFICATE: SHARP 34-10L

SECTION 10, TOWNSHIP, 3 SOUTH, RANGE 40 WEST, 6TH P.M.  
CHEYENNE COUNTY, KANSAS



I HEREBY STATETO PETROLEUM DEVELOPMENT CORP THAT THIS WELL LOCATION CERTIFICATE INDICATES THE WELL SHARP 34-10L TO BE LOCATED 1100' FSL AND 2310' FWL, SEC 10, T4S, R40W, 6TH P.M. CHEYENNE COUNTY, STATE OF KANSAS

BASIS OF BEARINGS AS SHOWN ABOVE  
GROUND ELEVATION SHOWN IS APPROXIMATE AND IS BASED ON AN OBSERVED GPS ELEVATION (NAVD 1988DATUM)  
LAT AND LON SHOWN ARE BASED ON AN OBSERVED GPS OBSERVATION (NAD 1983/92) WITH A PDOP VALUE LESS THAN SIX  
ALL DISTANCES ARE FIELD MEASURED UNLESS OTHERWISE NOTIFIED  
DISTANCES TO WELL ARE PERPENDICULAR TO SECTION LINES

FIELD DATE: 10/04/09  
DRAWN DATE: 10/11/09  
DRAWN BY: KER  
REV DATE: 10/22/09



SCALE: 1" = 1000'

THIS IS NOT A MONUMENTED BOUNDARY SURVEY. IT IS A DRAWING INTENDED TO DEPICT WELL LOCATION IN REFERENCE TO SECTION LINES