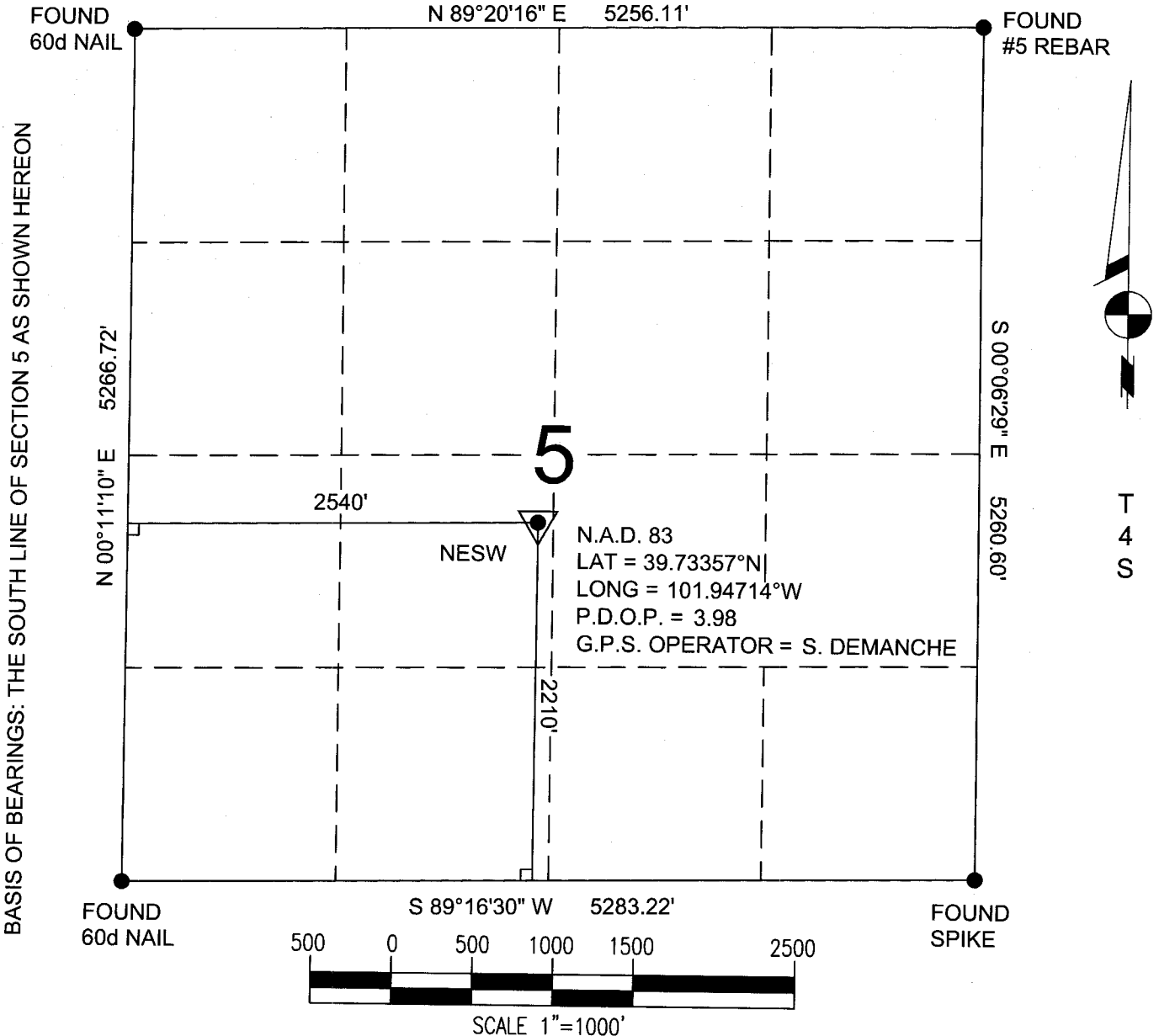


R 41 W



BASIS OF BEARINGS: THE SOUTH LINE OF SECTION 5 AS SHOWN HEREON

POWER SURVEYING COMPANY, INC. OF FREDERICK, COLORADO HAS IN ACCORDANCE WITH A REQUEST FROM DAN CASPER OF NOBLE ENERGY INC. DETERMINED THE LOCATION OF WIESE 23-5 TO BE 2210' FSL & 2540' FWL OF SECTION 5, TOWNSHIP 4 SOUTH, RANGE 41 WEST OF THE 6th PRINCIPAL MERIDIAN, COUNTY OF CHEYENNE, STATE OF KANSAS

LOCATION NOTES:
LOCATION FALLS IN: NATURAL GROUND
IMPROVEMENTS: NONE WITHIN 200' OF LOCAATION

ELEVATION DETERMINED FROM NAVD 1988 DATUM. GROUND ELEVATION = 3531'

DISTANCES AND BEARINGS ARE FIELD MEASURED UNLESS NOTED OTHERWISE.

LEGEND:

- SECTION CORNER (AS NOTED)
- ▼ PROPOSED WELL LOCATION



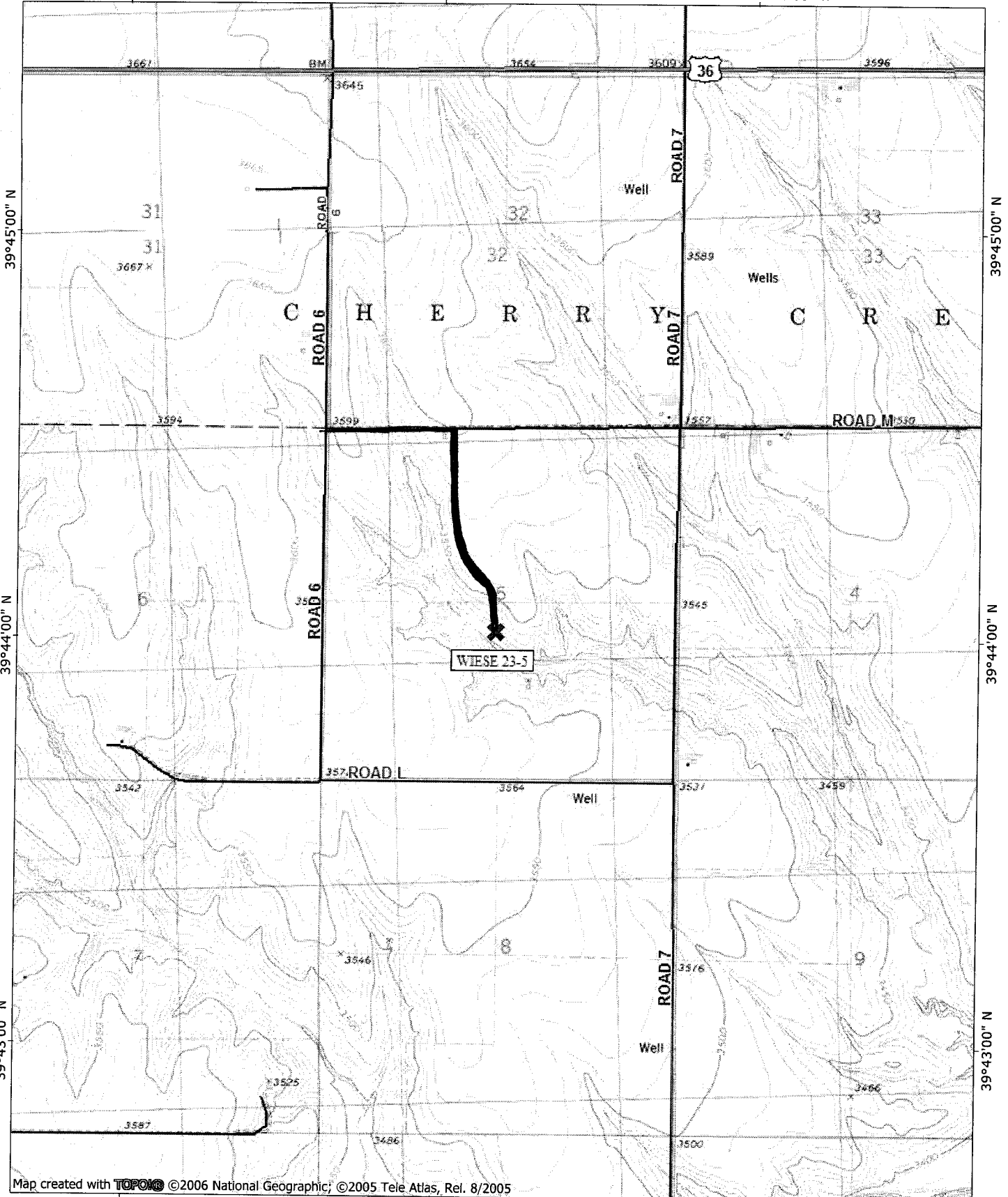
7800 MILLER DRIVE, UNIT C
FREDERICK, CO 80504
(303) 702-1617, FAX (303) 702-1488

WORK ORDER # 501-08-767
FIELD DATE: 10-22-08
DATE OF COMPLETION: 10-28-08

101°58'00" W

101°57'00" W

WGS84 101°56'00" W

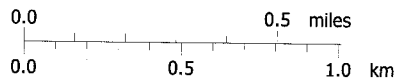


Map created with TOPO! ©2006 National Geographic, ©2005 Tele Atlas, Rel. 8/2005

101°58'00" W

101°57'00" W

WGS84 101°56'00" W



TN MN
8°

10/28/08