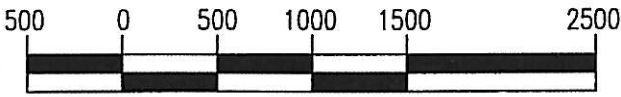


BASIS OF BEARINGS: THE SOUTH LINE OF SECTION 5 AS SHOWN HEREON



T
4
S



SCALE 1"=1000'

POWER SURVEYING COMPANY, INC. OF FREDERICK, COLORADO HAS IN ACCORDANCE WITH A REQUEST FROM DAN CASPER OF NOBLE ENERGY INC. DETERMINED THE LOCATION OF WIESE 34-5 TO BE 1250' FSL & 1600' FEL OF SECTION 5, TOWNSHIP 4 SOUTH, RANGE 41 WEST OF THE 6th PRINCIPAL MERIDIAN, COUNTY OF CHEYENNE, STATE OF KANSAS.

LOCATION NOTES:

LOCATION FALLS IN: DRY LAND
IMPROVEMENTS: E-W FENCE 175' SOUTH OF LOCATION

ELEVATION DETERMINED FROM NAVD 1988
DATUM. GROUND ELEVATION = 3535'

DISTANCES AND BEARINGS ARE FIELD
MEASURED UNLESS NOTED OTHERWISE.

LEGEND:

- SECTION CORNER (AS NOTED)
- ▽ PROPOSED WELL LOCATION



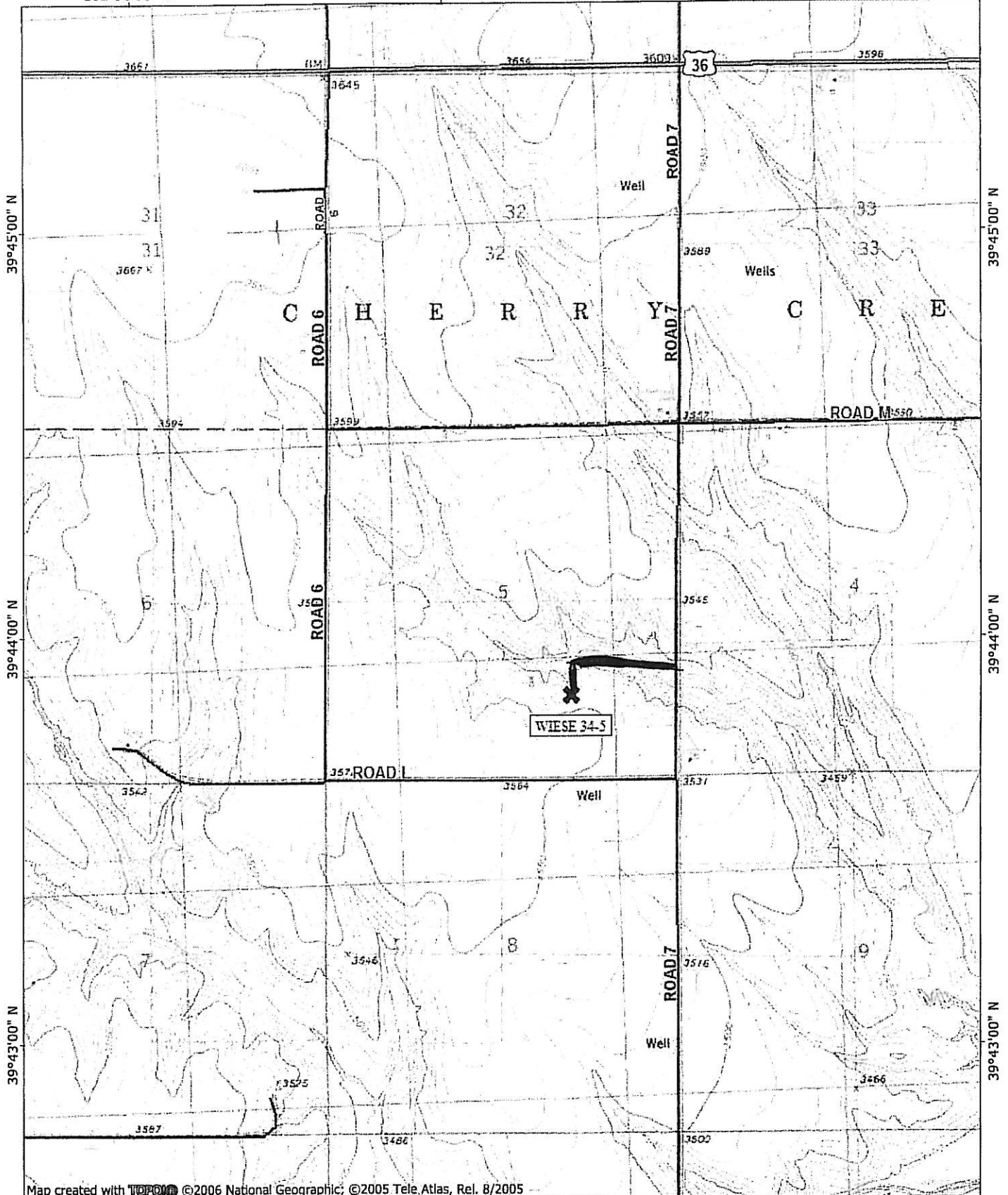
7800 MILLER DRIVE, UNIT C
FREDERICK, CO 80504
(303) 702-1617, FAX (303) 702-1488

WORK ORDER # 501-08-771
FIELD DATE: 10-21-08
DATE OF COMPLETION: 10-22-08

101°58'00" W

101°57'00" W

WGS84 101°56'00" W



Map created with TOPO! ©2006 National Geographic; ©2005 Tele Atlas, Rel. 8/2005

101°58'00" W

101°57'00" W

WGS84 101°56'00" W

