

POWER SURVEYING COMPANY, INC. OF FREDERICK, COLORADO HAS IN ACCORDANCE WITH A REQUEST FROM DAN CASPER OF NOBLE ENERGY INC. DETERMINED THE LOCATION OF WIESE 44-5 TO BE 1260' FSL & 1080' FEL OF SECTION 5, TOWNSHIP 4 SOUTH, RANGE 41 WEST OF THE 6th PRINCIPAL MERIDIAN, COUNTY OF CHEYENNE, STATE OF KANSAS.

LOCATION NOTES:
 LOCATION FALLS IN: DRY LAND
 IMPROVEMENTS: E-W FENCE 175' SOUTH OF LOCATION

ELEVATION DETERMINED FROM NAVD 1988 DATUM. GROUND ELEVATION = 3522'

DISTANCES AND BEARINGS ARE FIELD MEASURED UNLESS NOTED OTHERWISE.

LEGEND:

- SECTION CORNER (AS NOTED)
- ▼ PROPOSED WELL LOCATION



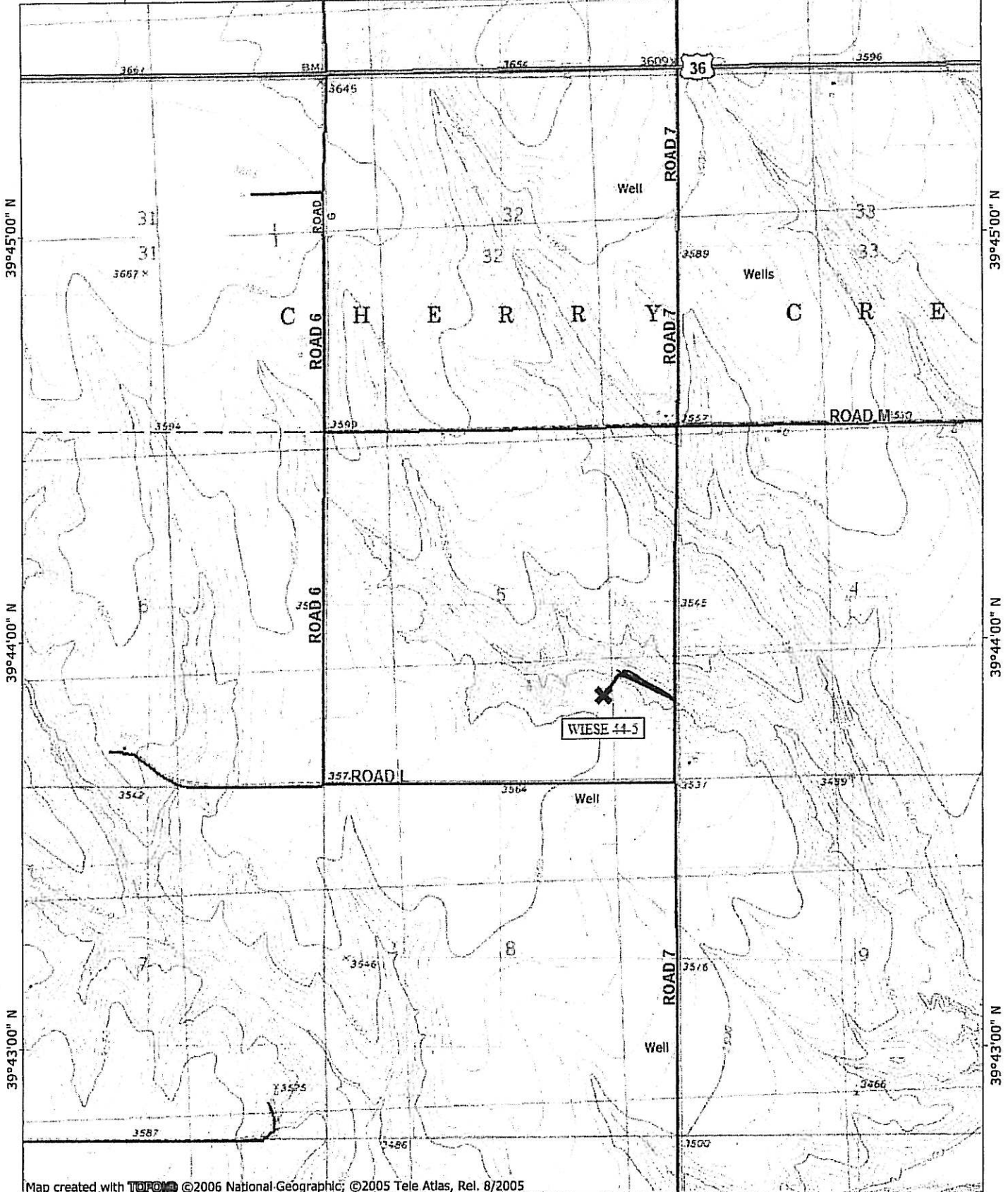
7800 MILLER DRIVE, UNIT C
 FREDERICK, CO 80504
 (303) 702-1617, FAX (303) 702-1488

WORK ORDER # 501-08-773
 FIELD DATE: 10-21-08
 DATE OF COMPLETION: 10-22-08

101°58'00" W

101°57'00" W

WGS84 101°56'00" W



39°45'00" N

39°45'00" N

39°44'00" N

39°44'00" N

39°43'00" N

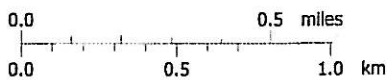
39°43'00" N

Map created with TOPO! ©2006 National Geographic; ©2005 Tele Atlas, Rel. 8/2005

101°58'00" W

101°57'00" W

WGS84 101°56'00" W



TN MN

8°

10/22/08