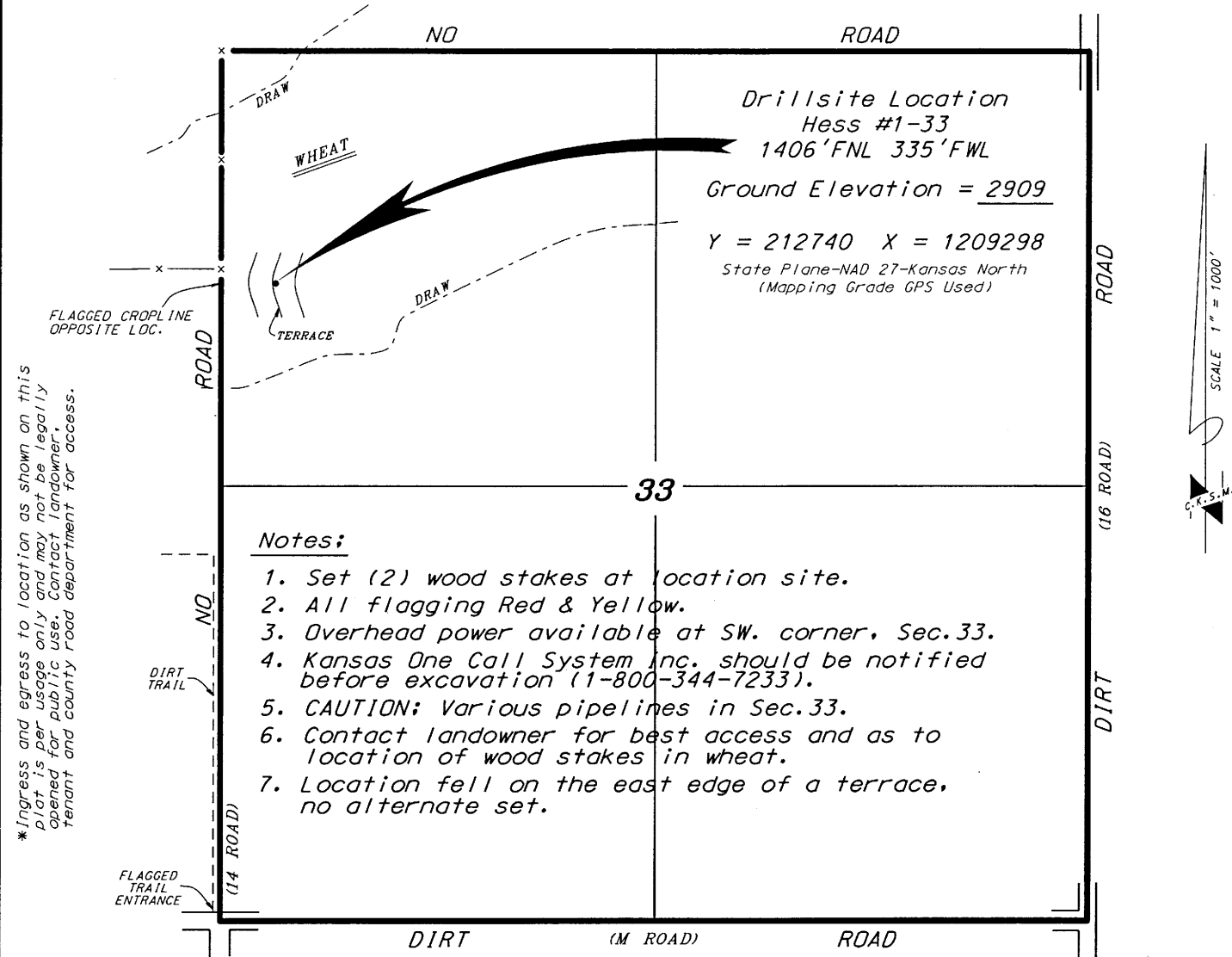
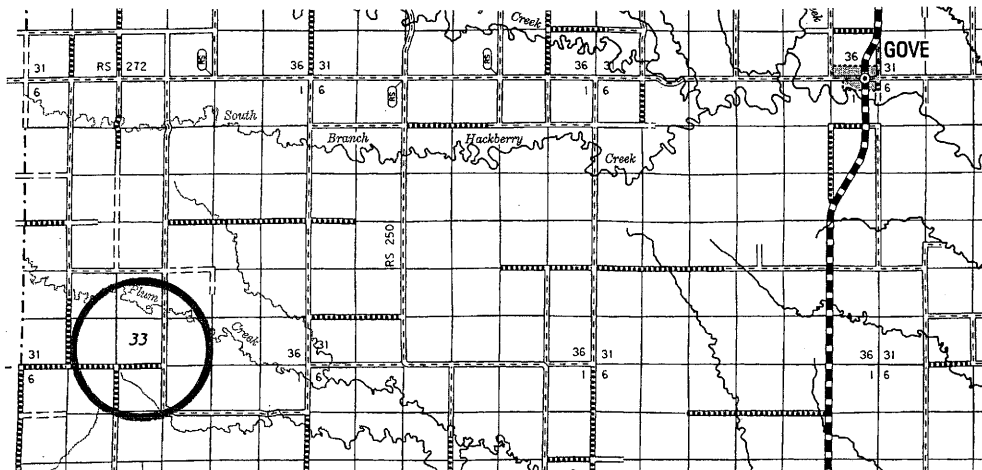


GRAND MESA OPERATING COMPANY
 HESS LEASE
 NW.1/4, SECTION 33, T13S, R31W
 GOVE COUNTY, KANSAS



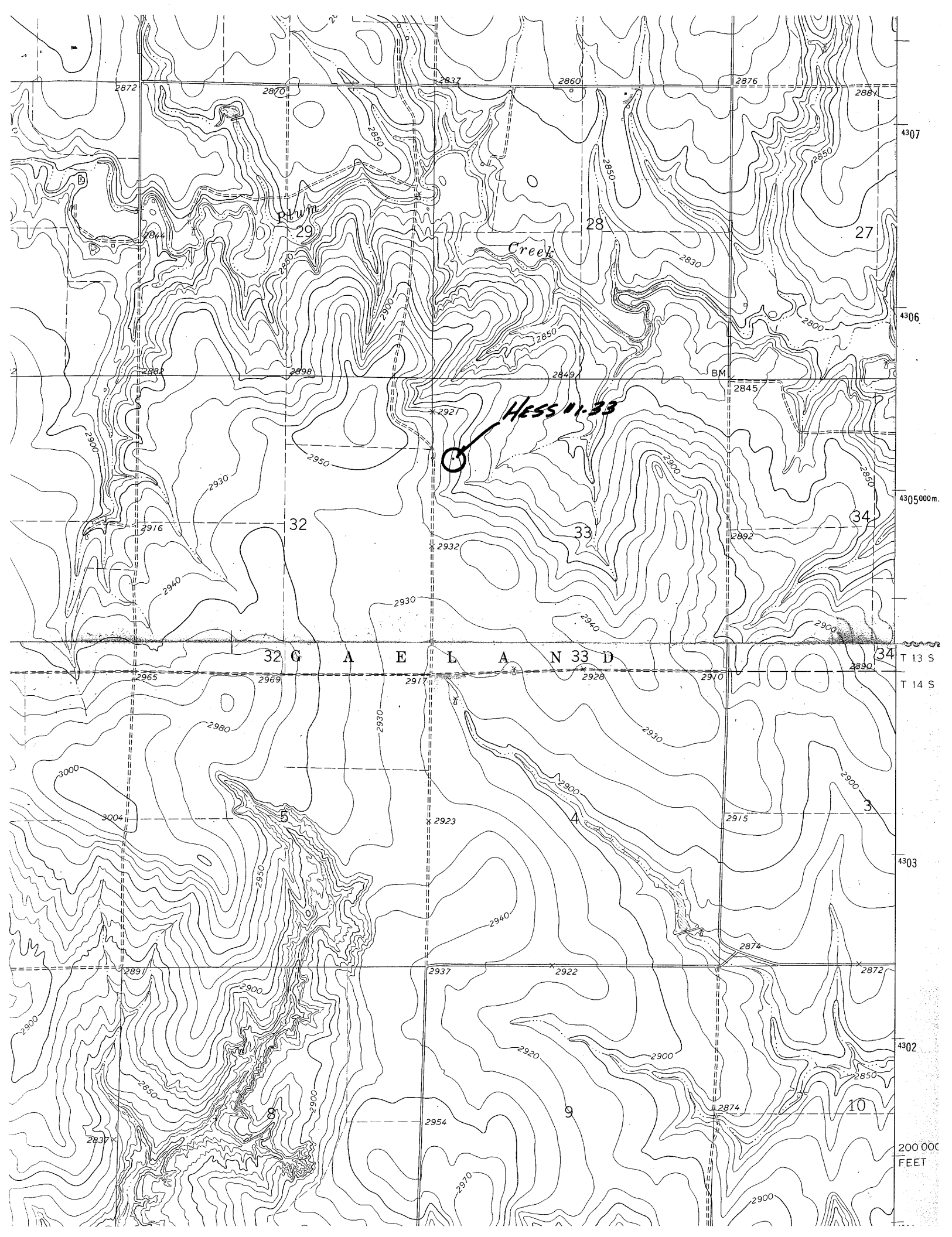
Notes:

1. Set (2) wood stakes at location site.
2. All flagging Red & Yellow.
3. Overhead power available at SW. corner, Sec.33.
4. Kansas One Call System Inc. should be notified before excavation (1-800-344-7233).
5. CAUTION; Various pipelines in Sec.33.
6. Contact landowner for best access and as to location of wood stakes in wheat.
7. Location fell on the east edge of a terrace, no alternate set.



*Controlling data is based upon the best maps and photographs available to us and upon a regular section of land containing 640 acres.
 *Approximate section lines were determined using the normal standard of care of oilfield surveyors practicing in the state of Kansas. The section corners, which establish the precise section lines, were not necessarily located, and the exact location of the drillsite location in the section is not guaranteed. Therefore, the operator securing this service and accepting this plat and all other parties relying thereon agree to hold Central Kansas Oilfield Services, Inc., its officers and employees harmless from all losses, costs and expenses and said entities released from any liability from incidental or consequential damages.
 *Elevations derived from National Geodetic Vertical Datum.

Date January 14, 2010



Plum

Creek

Hess #1-33

32 G A E L A N 33 D

4307

4306

4305000m.

T 13 S

T 14 S

4303

4302

200 000
FEET