

# ADVANTAGE ELEVATIONS

OIL FIELD SURVEYORS

BOX 8604 - PRATT, KS 67124  
(620) 672-6491

116102

INVOICE NO

LOTUS OPERATING COMPANY LLC  
OPERATOR

1-A  
NO.

Piester  
FARM

Kiowa      23   29<sup>th</sup>   16<sup>th</sup>  
COUNTY      S      T      R

1605' FSL & 450' FEL  
LOCATION

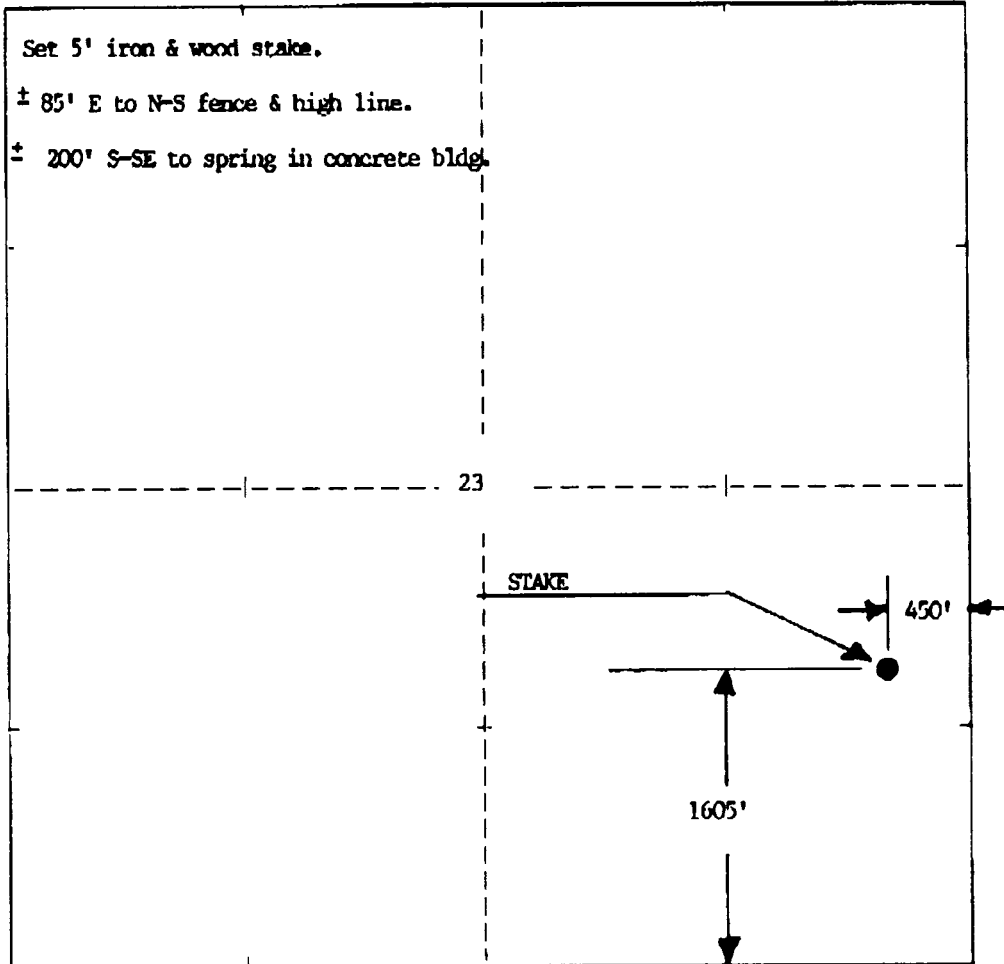
ELEVATION: 1981' gr



LOTUS OPERATING COMPANY LLC  
100 S Main, Ste 420  
Wichita KS 67202

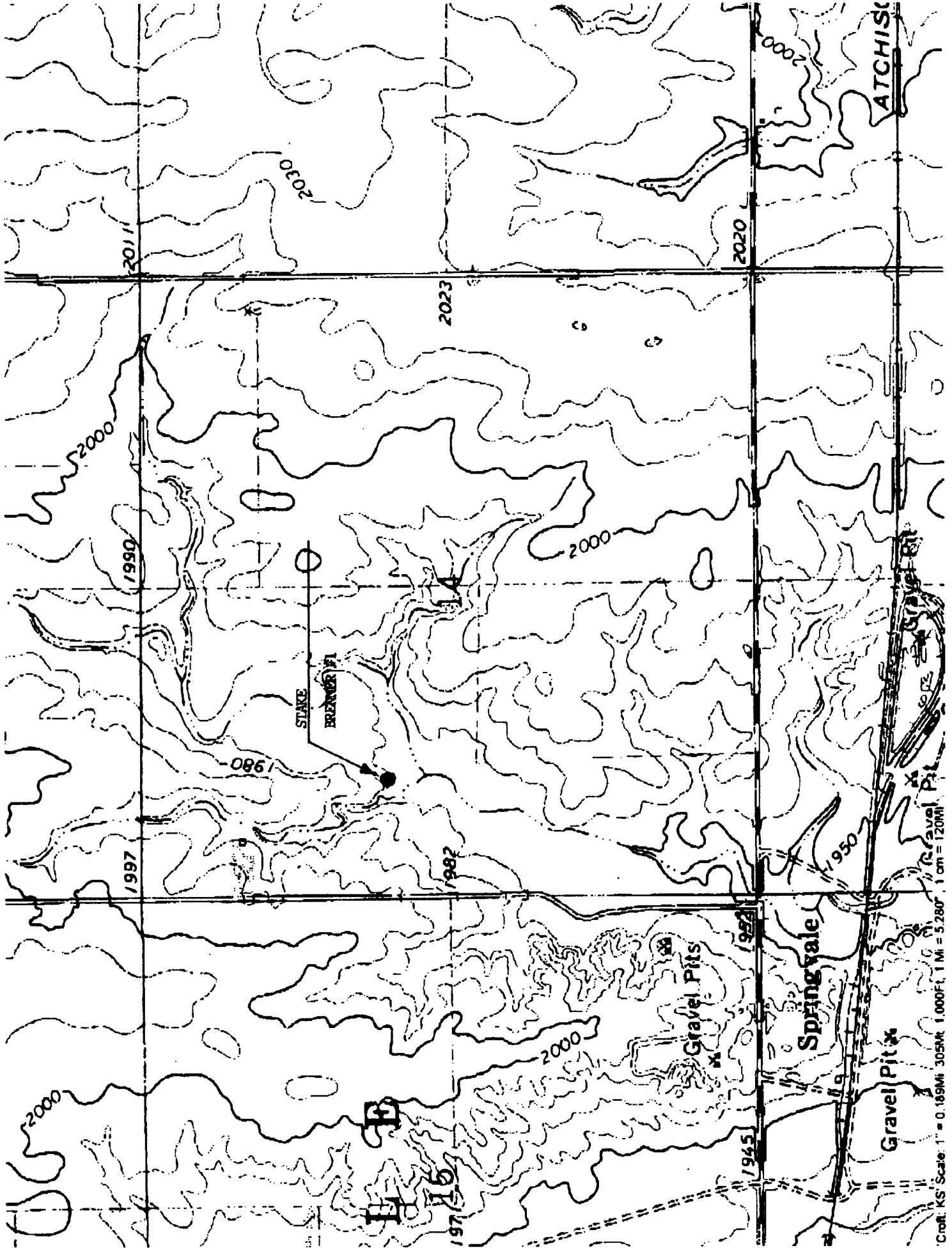
AUTHORIZED BY: Tim Hellman

SCALE: 1" = 1000'



Set 5' iron & wood stake.  
± 85' E to N-S fence & high line.  
± 200' S-SE to spring in concrete bldg.

Staked 01/16/2010



Cred. KS' Scale: 1" = 0.189Mi 305M 1.000Ft. 1 Mi = 5.280' 1 cm = 120M