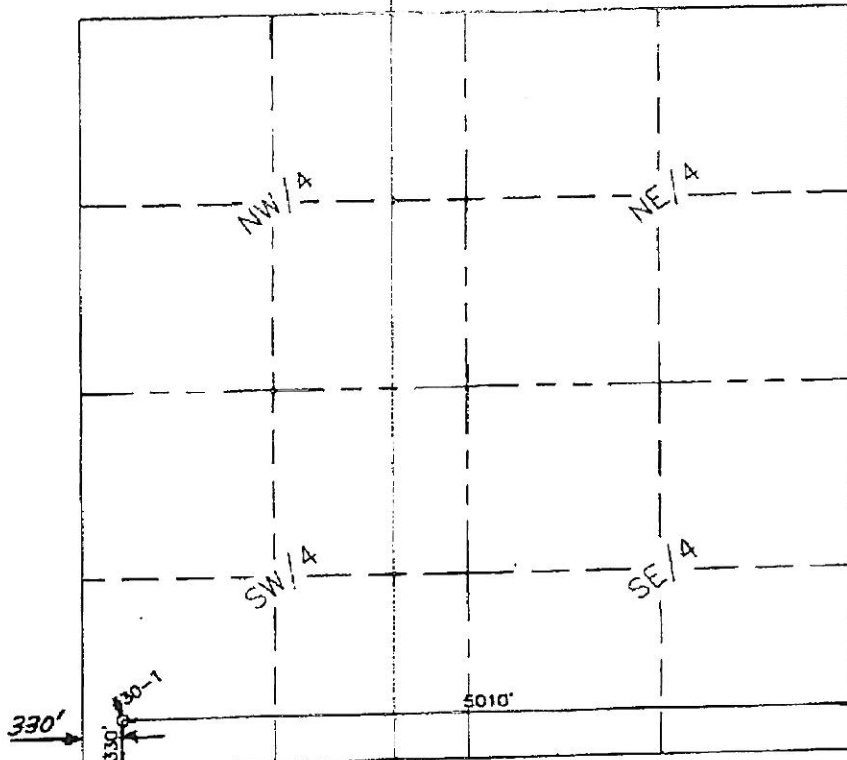


SECTION 30, TOWNSHIP 33 SOUTH, RANGE 13 EAST
CHAUTAUQUA COUNTY, KANSAS



DATED: JANUARY 14, 2010

WELL #30-1:
330 FEET FROM THE SOUTH LINE AND 3010 FEET FROM THE EAST LINE (OR 330 FEET FROM WEST LINE
OF SECTION 30, T33S, R13E, CHAUTAUQUA COUNTY, KANSAS
ELEVATION = 853.0'



SCALE: 1" = 1000'



DATE: 01/14/2010

BUCKLAND SURVEYING, INC.
2311 S. WILSON AVENUE
WICHITA, KANSAS 67201
TEL: 316-261-1111
FAX: 316-261-1112
WWW.BUCKLANDSURVEYING.COM

2/1/10

RECEIVED
KANSAS CORPORATION COMMISSION
FEB 01 2010
CONSERVATION DIVISION
WICHITA, KS