

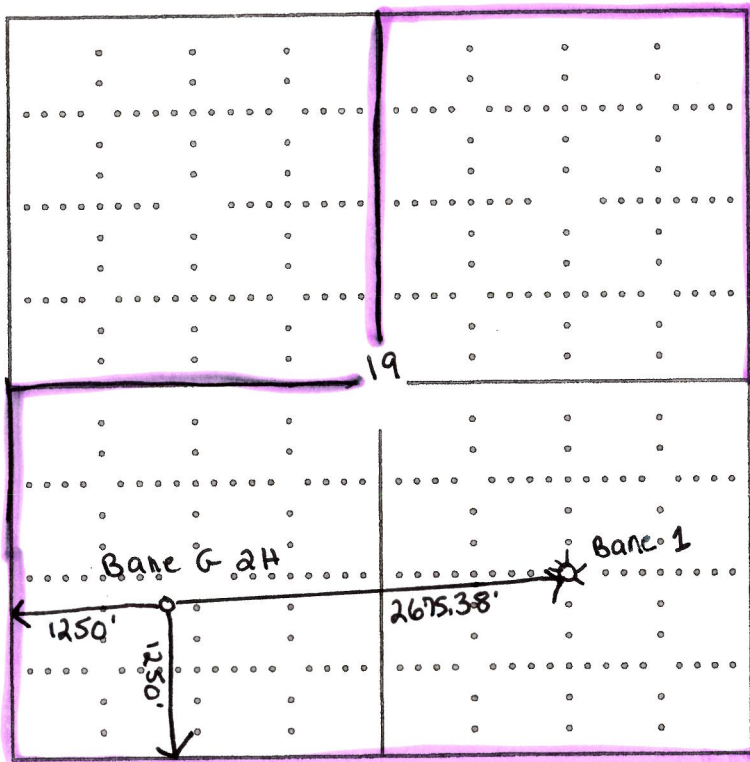
PLAT AND CERTIFICATION OF ACREAGE ATTRIBUTABLE TO A GAS WELL

Kansas Corporation Commission, Conservation Division
 Finney State Office Building, 130 South Market, Room 2078 Wichita, Kansas 67202

API NUMBER 15-
 OPERATOR: Anadarko Petroleum Corporation
 LEASE: Bane G
 WELL NUMBER: 2H
 FIELD: Hugoton
 NUMBER OF ACRES ATTRIBUTABLE TO WELL: 635.4
 QTR/QTR/QTR: NE - SW - SW

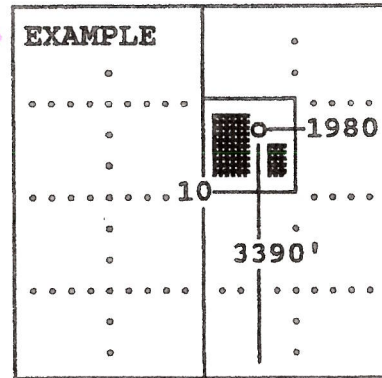
LOCATION OF WELL: COUNTY: Stevens
1250 feet from X South North line of section
1250 feet from East X West line of section
 SECTION 19 TWP 33(S) RNG 38W
 IS SECTION X REGULAR or IRREGULAR
 IF SECTION IS IRREGULAR, LOCATE WELL FROM
 NEAREST CORNER BOUNDARY (check line below)
 Section corner used: NE NW SE SW

(Show the location for the well and shade attributable acreage for prorated or spaced wells). (Show the footage to the nearest lease or unit boundary line; and show footage to the nearest common source supply well).



SEE ENCLOSED FOR MAP OF UNIT

DIVERGENT INTERESTS



SEWARD CO.

Unit = $5/2$, NE 19-33S-38W
 SW 20-33S-38W

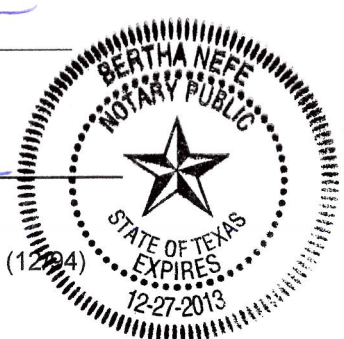
The undersigned hereby certifies as Staff Regulatory Analyst (title) for Anadarko Petroleum Corporation (Co.), a duly authorized agent, that all information shown hereon is true and correct to the best of my knowledge and belief, that all acreage claimed attributable to the well named herein is held by production from that well and hereby make application for an allowable to be assigned to the well upon the filing of this form and the State test, whichever is later.

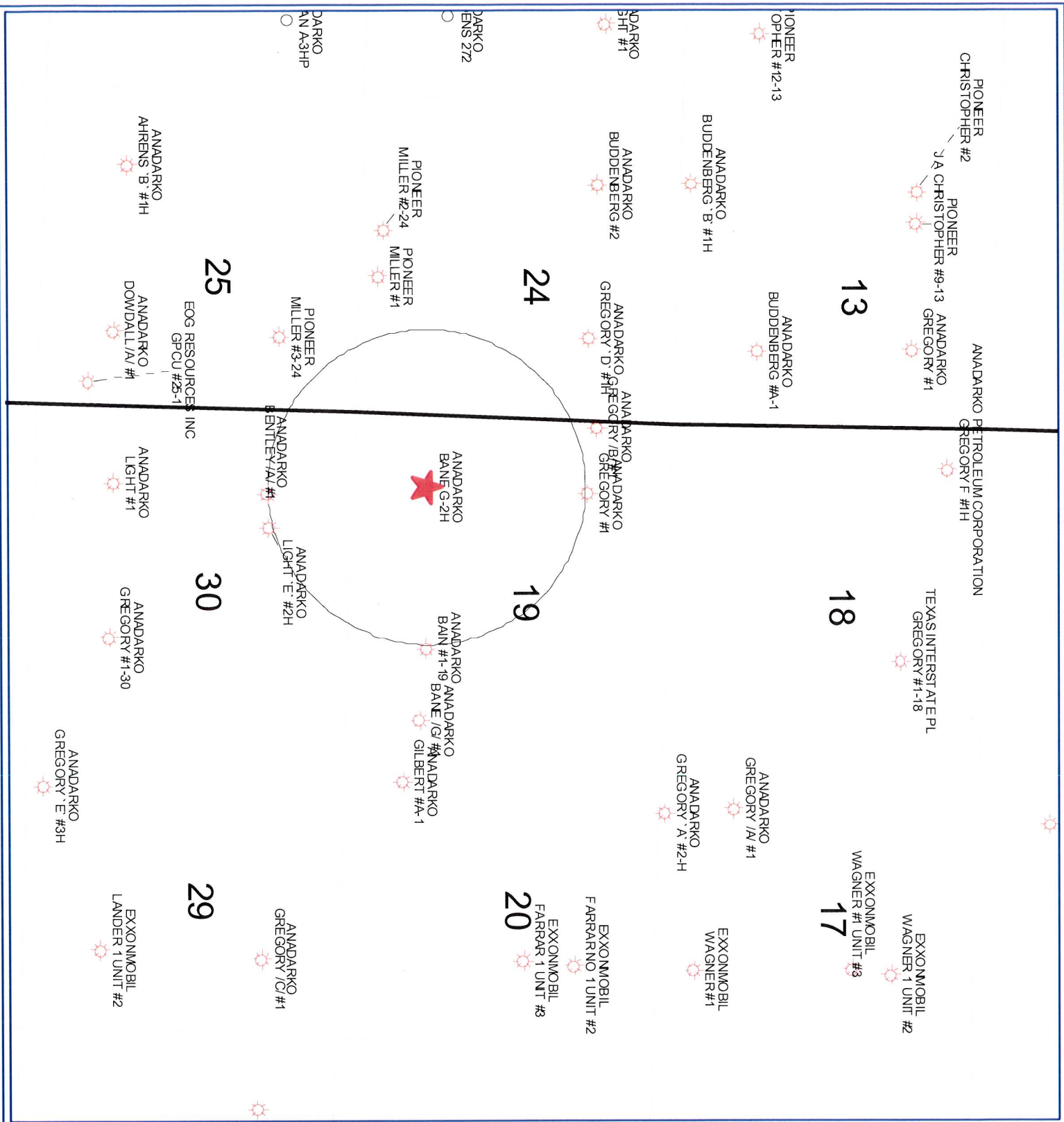
Signature Bertha Neff

Subscribed and sworn before me this 5th day of February, 2010

Bertha Neff
 Notary Public

My Commission expires 12-27-2013





Anadarko
Petroleum Corporation

Bane G-2H
19-33S-38W
Sewers County, Kansas

POSTED WELL DATA

Operator
Well Label

WELL SYMBOLS

- LOCATION
- ☀ Gas Well
- Operator Well Label

0 2,139
FEET

February 4, 2010