



ROBINSON SERVICES

Oil Field & Construction Staking

P.O. Box 2324

Garden City, Kansas 67846

Office/Fax: (620) 276-6159

Cell: (620) 272-1499



z020510-i
PLAT NO.

8569
INVOICE NO.

OXY USA Inc.

OPERATOR

Grant County, KS

COUNTY

18 30s 38w
Sec. Twp. Rng.

Nave B-1

(Formerly Called Nave 12-H18-30-38)

LEASE NAME

1668' FNL - 474' FEL

LOCATION SPOT

SCALE: **1" = 1000'**
DATE: **Feb. 3rd, 2010**
MEASURED BY: **Ben R.**
DRAWN BY: **Gabe Q.**
AUTHORIZED BY: **Ron I.**

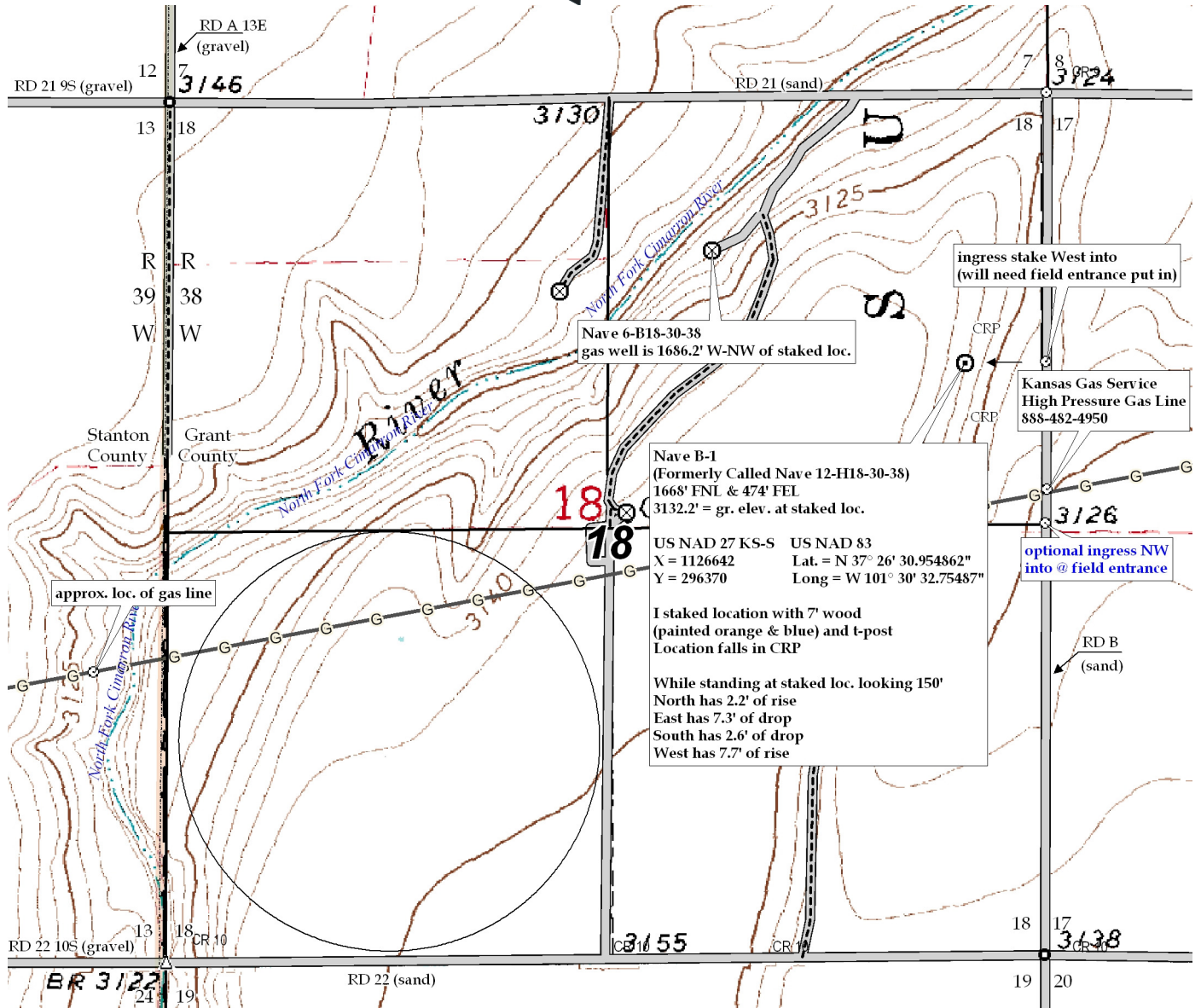


GR. ELEVATION: **3132.2'**

Directions: From approx. 1 mile North of Big Bow, Ks at the intersection of Hwy 160 & S Big Bow G Rd South - Now go 9 miles South on S Big Bow G Rd - Now go 2 miles East on Road 21 9S to the NW corner of section 18-30s-38w - Now go 1 mile on East on RD 21 - Now go 0.4 mile South on RD B to ingress stake West into - Now go 474' West through CRP into staked location.

Final ingress must be verified with land owner or OXY USA Inc.

*This drawing does not constitute a monumented survey or a land survey plat
This drawing is for construction purposes only*



18 30s 38w

Nave B-1
(Formerly Called Nave 12-H18-30-38)
1668' FNL & 474' FEL
3132.2' = gr. elev. at staked loc.
US NAD 27 KS-S X = 1126642 Y = 296370
US NAD 83 Lat. = N 37° 26' 30.954862" Long = W 101° 30' 32.75487"

I staked location with 7' wood (painted orange & blue) and t-post
Location falls in CRP

While standing at staked loc. looking 150°
North has 2.2' of rise
East has 7.3' of drop
South has 2.6' of drop
West has 7.7' of rise

ingress stake West into (will need field entrance put in)

Kansas Gas Service High Pressure Gas Line 888-482-4950

optional ingress NW into @ field entrance

approx. loc. of gas line

RD B (sand)

BR 3122