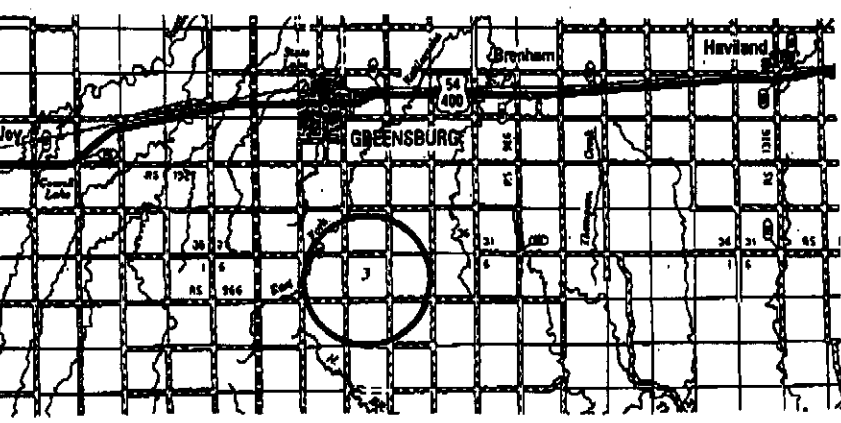
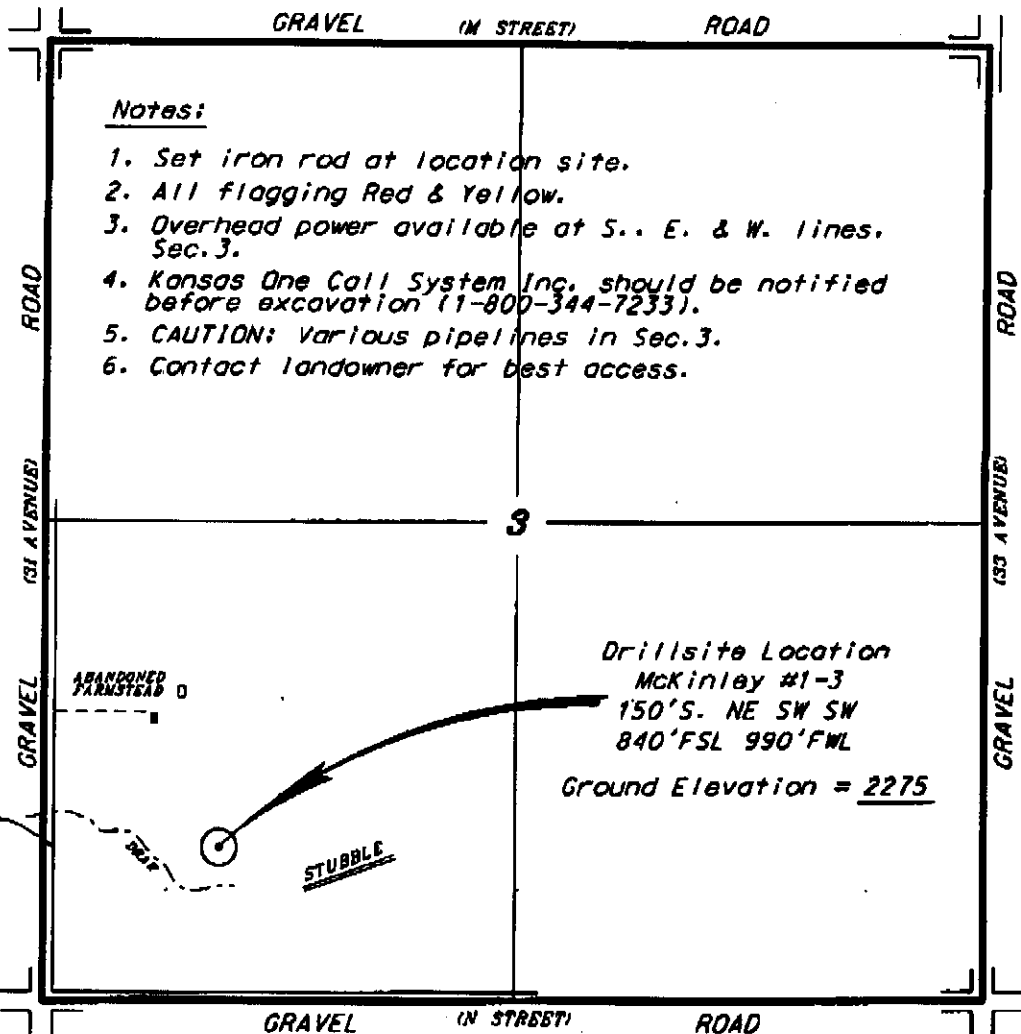


F.G. HOLL COMPANY, LLC  
MCKINLEY LEASE  
SW.1/4, SECTION 3, T29S, R18W  
KIDWA COUNTY, KANSAS

This site was previously in agricultural use shown on this plat is for usage only and may not be legally opened for public use. Contact landowner, tenant and county road department for access.



• Controlling data is based upon the best maps and photographs available to us and upon a regular section of land containing 360 acres.  
 • Approximate section lines were determined using the normal standards of care of oilfield surveys practicing in the state of Kansas. The section corners, when established the precise quarter lines, were not necessarily located, and the exact location of the drillsite location in the section is not guaranteed. Therefore, the operator accepting this service and accepting this plat and all other parties relying thereon agree to hold Central Kansas Oilfield Services, Inc., its officers and employees harmless from all lawsuits, costs and expenses and said activities released from any liability from incidental or consequential damages.  
 • Elevations derived from National Geodetic Vertical Datum.

DATE February 26, 2010