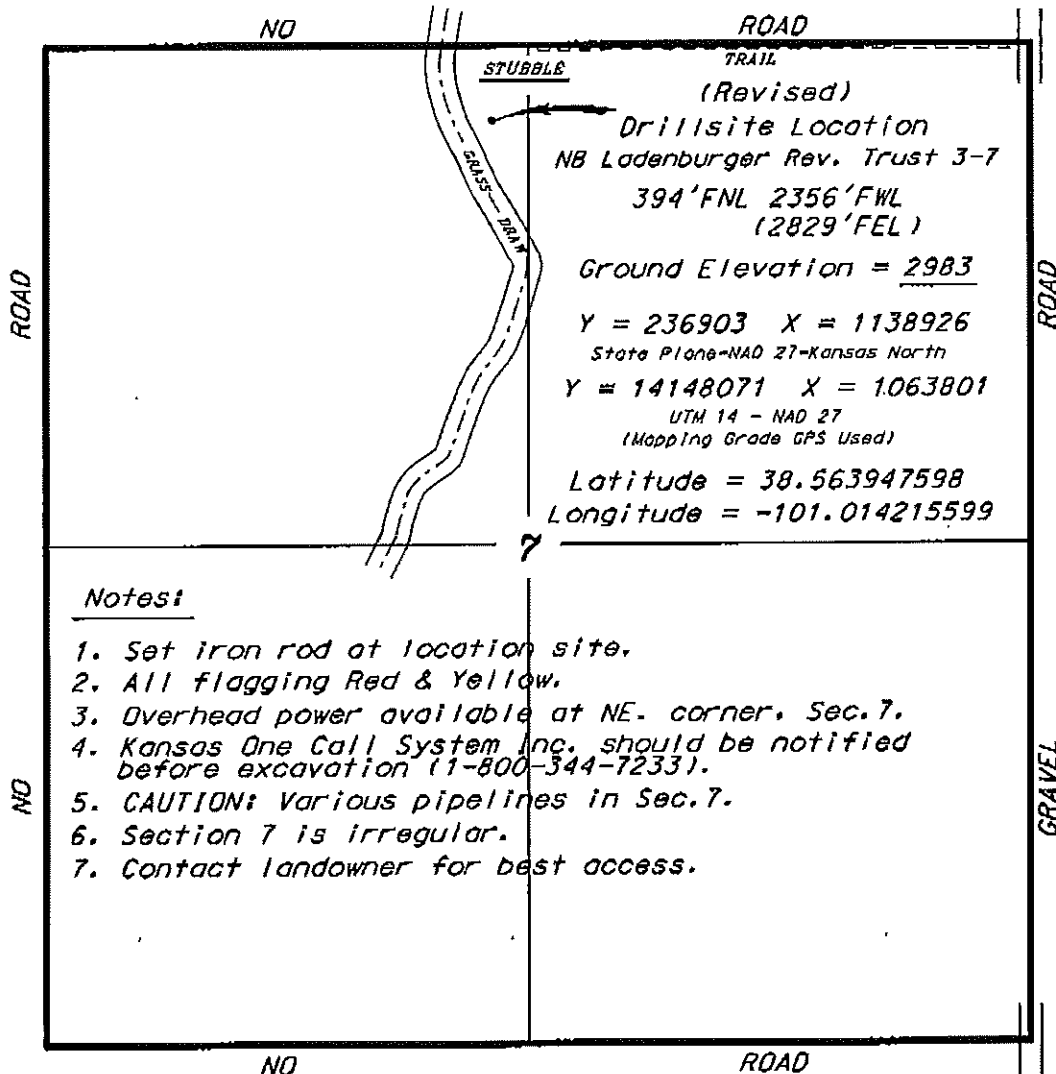


MAK-J ENERGY KANSAS, LLC
NB LADENBURGER REV. TRUST LEASE
NW. 1/4, SECTION 7, T13S, R33W
LOGAN COUNTY, KANSAS

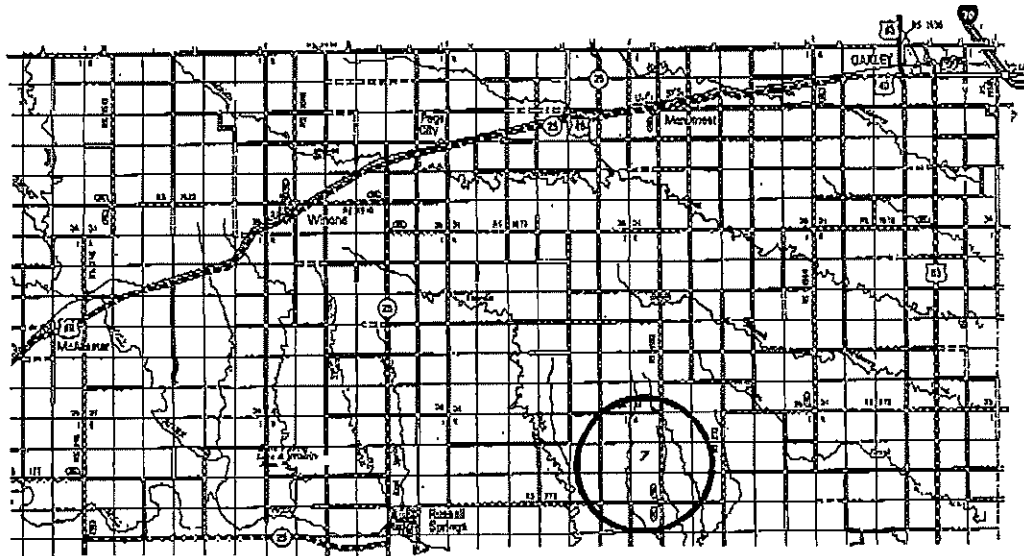


Drillsite Location (Revised)
 NB Ladenburger Rev. Trust 3-7
 394' FNL 2356' FWL
 (2829' FEL)
 Ground Elevation = 2983
 Y = 236903 X = 1138926
 State Plane-NAD 27-Kansas North
 Y = 14148071 X = 1063801
 UTM 14 - NAD 27
 (Mapping Grade GPS Used)
 Latitude = 38.563947598
 Longitude = -101.014215599

Notes:

1. Set iron rod at location site.
2. All flagging Red & Yellow.
3. Overhead power available at NE. corner, Sec. 7.
4. Kansas One Call System Inc. should be notified before excavation (1-800-344-7233).
5. CAUTION: Various pipelines in Sec. 7.
6. Section 7 is irregular.
7. Contact landowner for best access.

*Ingress and egress to location as shown on this plot is per usage only and may not be legally opened for public use. Contact landowner, tenant and county road department for access.



• Controlling data is based upon the best maps and photographs available to us and upon a regular section of land containing 640 acres.
 • Approximate section lines were determined using the normal standard of care of oilfield surveyors practicing in the state of Kansas. The section corners, which establish the precise section lines, were not necessarily located, and the exact location of the drillsite location in the section is not guaranteed. Therefore, the operator accepting this service and accepting this plot and all other parties relying thereon agree to hold Central Kansas Oilfield Services, Inc., its officers and employees harmless from all losses, costs and expenses and void entries released from any liability from incidental or consequential damages.
 • Elevations derived from National Geodetic Vertical Datum.

Date March 4, 2010