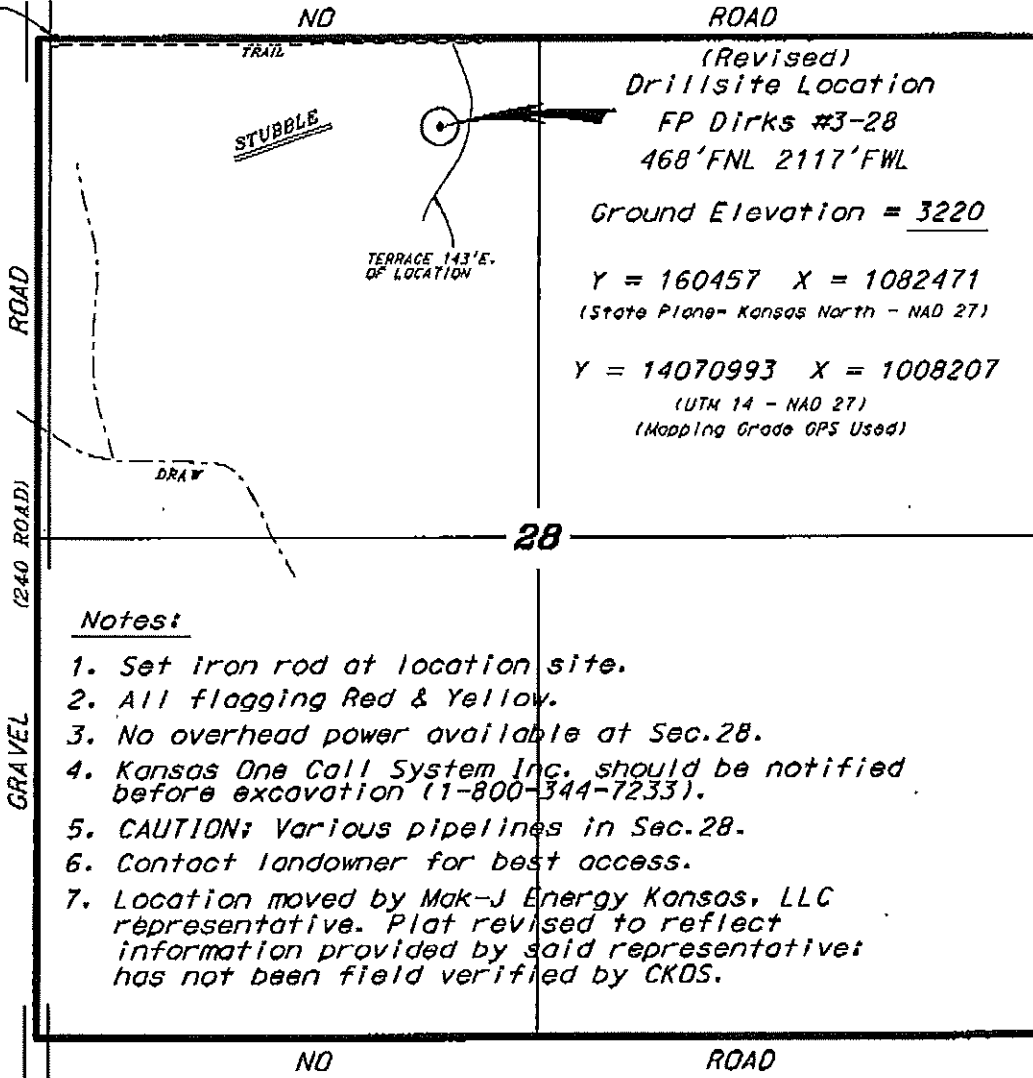


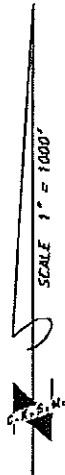
**MAK-J ENERGY KANSAS, LLC
 FP DIRKS LEASE
 NW.1/4, SECTION 28, T15S, R35W
 LOGAN COUNTY, KANSAS**

FIELD ENTRANCE



(Revised)
Drillsite Location
 FP Dirks #3-28
 468'FNL 2117'FWL
 Ground Elevation = 3220
 Y = 160457 X = 1082471
 (State Plane- Kansas North - NAD 27)
 Y = 14070993 X = 1008207
 (UTM 14 - NAD 27)
 (Mapping Grade OPS Used)

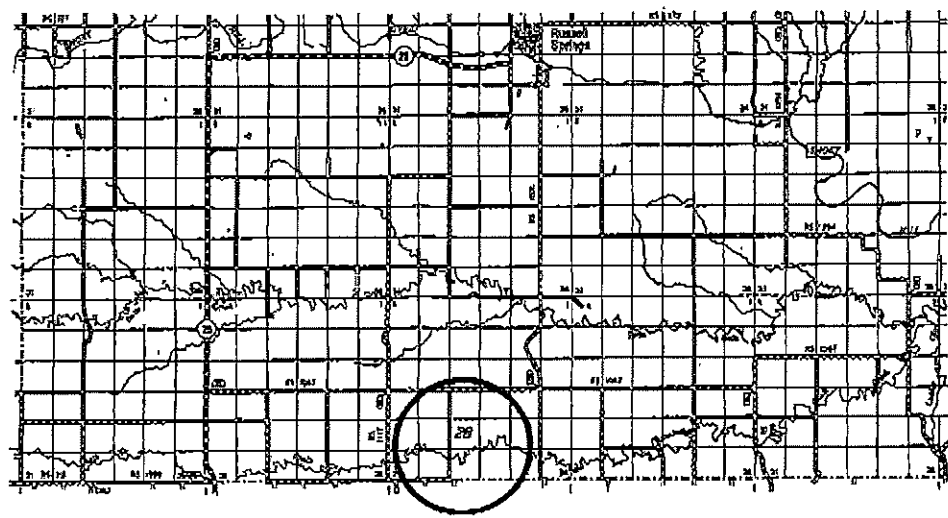
ROAD NO ROAD



*Ingress and egress to location as shown on this plat is for usage only and may not be legally opened for public use. Contact landowner, tenant and county road department for access.

Notes:

1. Set iron rod at location site.
2. All flagging Red & Yellow.
3. No overhead power available at Sec.28.
4. Kansas One Call System Inc. should be notified before excavation (1-800-344-7233).
5. CAUTION; Various pipelines in Sec.28.
6. Contact landowner for best access.
7. Location moved by Mak-J Energy Kansas, LLC representative. Plat revised to reflect information provided by said representative; has not been field verified by CKDS.



• Controlling data is based upon the best maps and photographs available to us and upon a regular section of land containing 640 acres.
 • Approximate section lines were determined using the normal standard of care of oilfield surveyors practicing in the state of Kansas. The section corners, which establish the precise section lines, were not necessarily located, and the exact location of the drillsite location in the section is not guaranteed. Therefore, the operator securing this service and accepting this plat and all other parties relying thereon agree to hold Central Kansas Oilfield Services, Inc., its officers and employees harmless from all losses, costs and expenses and said entities released from any liability from incidental or consequential damages.
 • Elevations derived from National Geodetic Vertical Datum.

Date March 5, 2010