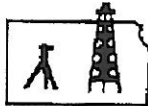


Lee Showalter Home 785-343-2261 Cell 785-635-8906 Best #



Pro-Stake LLC
Oil Field & Construction Site Staking
P.O. Box 2324
Garden City, Kansas 67846
Office/Fax: (620) 276-6159
Cell: (620) 272-1499



1051410-x
PLAT NO.

8733
INVOICE NO.

Downing-Nelson Oil Company
OPERATOR

Shean #1-16
LEASE NAME

Pawnee County, KS
COUNTY

16 20s 20w
Sec. Twp. Rng.

Main loc. = 550' FNL - 1160' FWL = 2179.3' = gr.
Alt. #1 = 580' FNL - 1160' FWL = 2179.2' = gr.

LOCATION SPOT

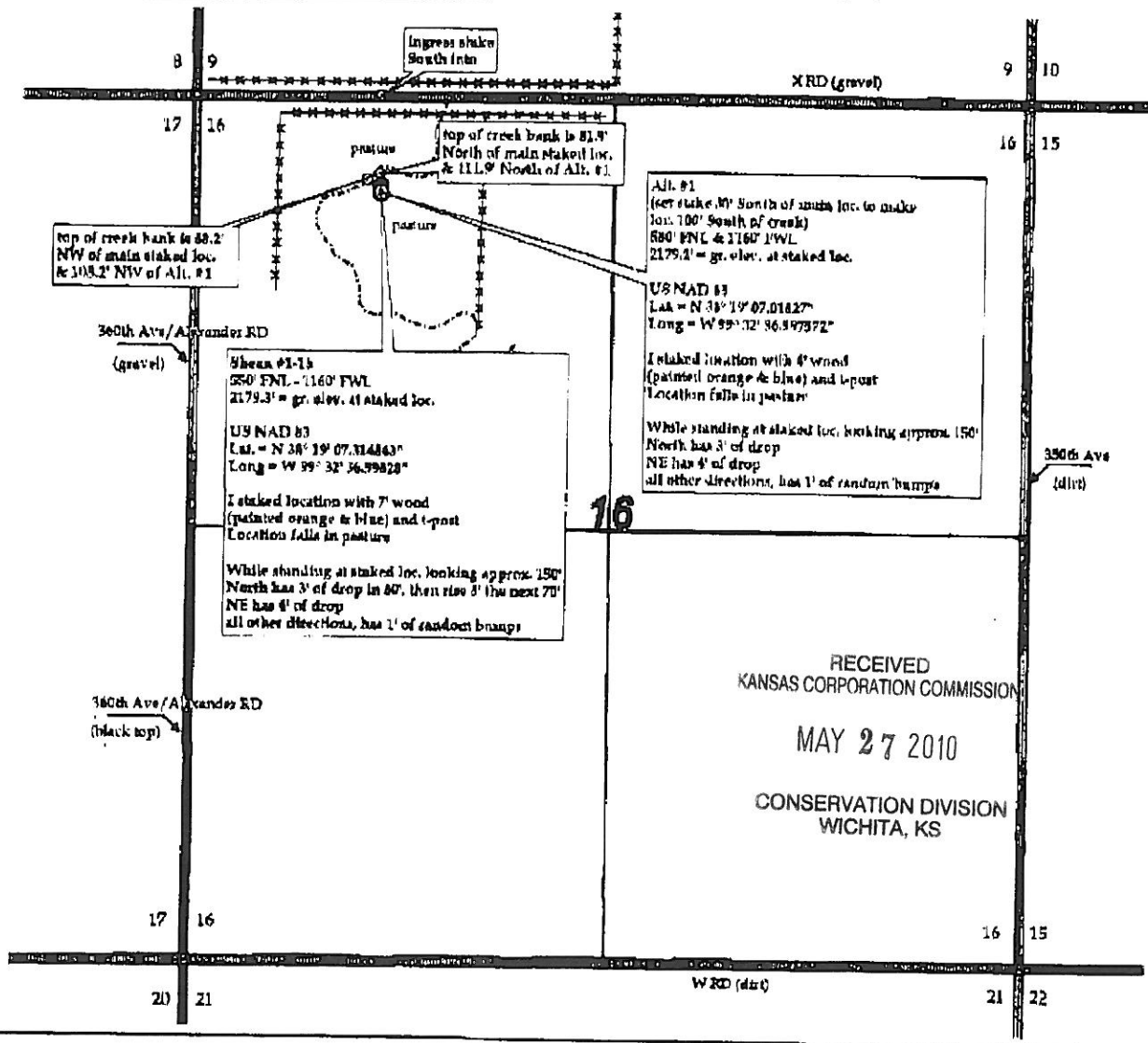
SCALE: 1" = 1000'
DATE STAKED: April 28th, 2010
MEASURED BY: Ben R.
DRAWN BY: Gabe Q.
AUTHORIZED BY: Ron N.



Directions: From the SE side of Alexander, Ks at the intersection of Hwy 96 & Alexander Rd South - Now go 10.2 miles South on Alexander RD to the NW corner of section 16-20s-20w - Now go 0.2 mile East on X RD to ingress stako South into - Now go 550' South through pasture into staked location

Final ingress must be verified with land owner or Downing-Nelson Oil Company

This drawing does not constitute a monumented survey or a land survey plot. This drawing is for construction purposes only.



RECEIVED
KANSAS CORPORATION COMMISSION
MAY 27 2010
CONSERVATION DIVISION
WICHITA, KS