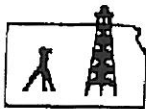


John Lohrey Cell 785-731-5112



Pro-Stake LLC
Oil Field & Construction Site Staking
P.O. Box 3324
Garden City, Kansas 67846
Office/Fax: (620) 276-6159
Cell: (620) 272-1499



051510-d
PLAT NO.

8734
INVOICE NO.

Downing-Nelson Oil Company
OPERATOR

Schwartzkopf Trust #1-2
LEASE NAME

Rush County, KS
COUNTY

2 18s 18w
Sec. Twp. Rng.

2040' FNL - 2287' FWL
LOCATION SPOT

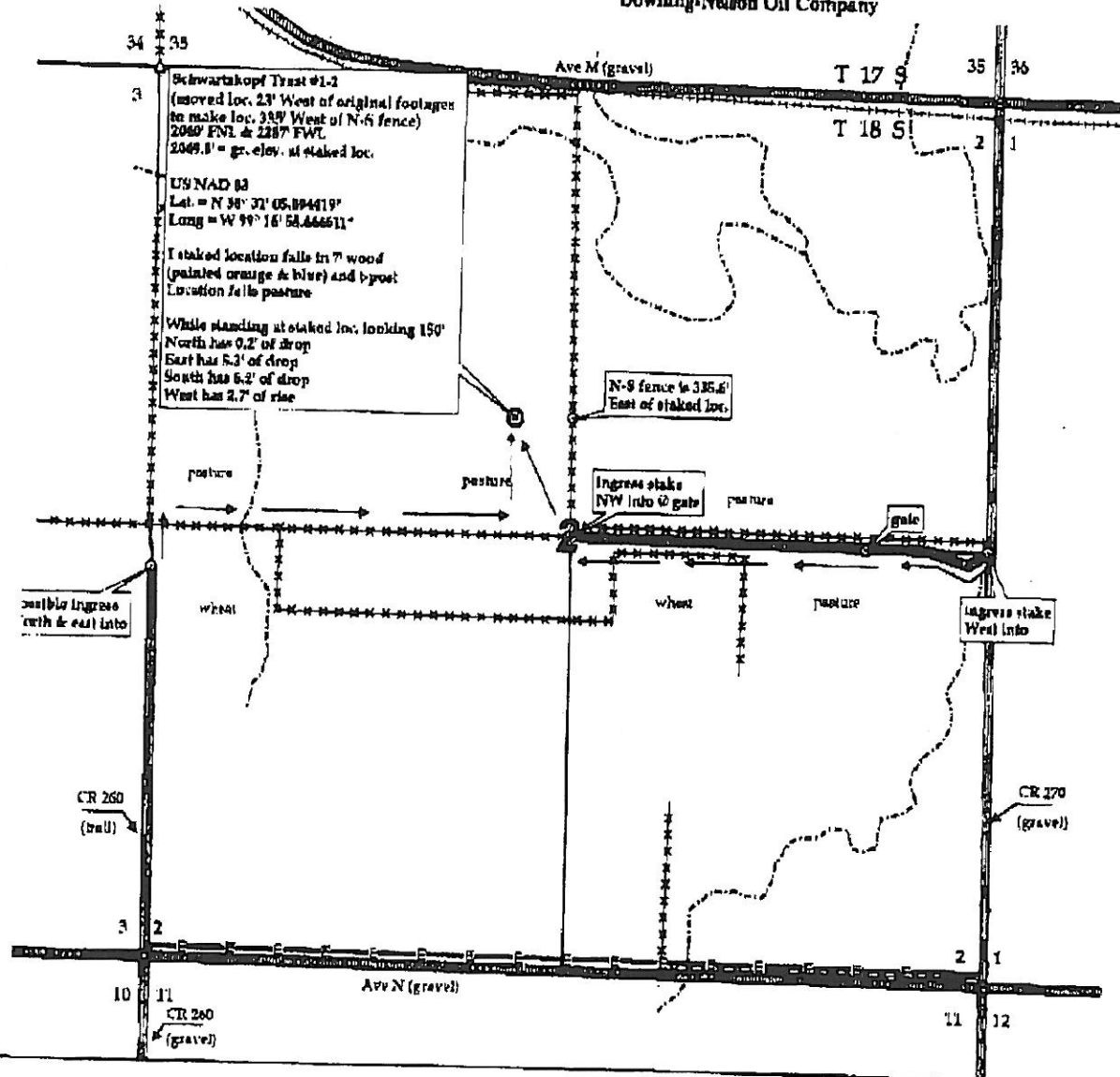
SCALE: **1" = 1000'**
DATE STAKED: **May 12th, 2010**
MEASURED BY: **Ben R.**
DRAWN BY: **Gabe D.**
AUTHORIZED BY: **Ron N.**

CR. ELEVATION: **2049.8'**



Directions: From the North side of La Crosse, Ka at the intersection of Hwy 183 & Hwy 4 - Now go 2 miles South on Hwy 183 - Now go 2 miles East on Ave N to the SE corner of section 2-18s-18w - Now go 0.5 mile North on CR 270 to ingress stake West into - Now go 0.2 mile West on trail to gate - Now go 0.3 mile West on trail to ingress stake NW into @ gate - Now go 810' NW through pasture into staked location.
Final ingress must be verified with land owner or Downing-Nelson Oil Company

This drawing does not constitute a warranted survey of a land survey plat. This drawing is for construction purposes only.



RECEIVED

JUN 14 2010

KCC WICHITA