

Three Corners Surveying and Mapping Oil and Gas Well Staking

PO Box 463, Wray, CO 80758, (970) 332-4133

Rosewood Resources, Inc.

Operator

Cheyenne County, KS

County

Directions

From the intersection of Highway 36 and County Road 15:

- South on County Road '15' 1.5 miles
- West on County Road 'M' 1 mile
- South on County Road '14' 1.4 miles
- West 650 feet across field to proposed location

14 June 2010

Date of field work

E. Johnson

Measured by

E. Johnson

Drawn by

N. Chesley

Auhtorized by

Uplinger 42-09

Well name

9 4S 40W

Section Township Range

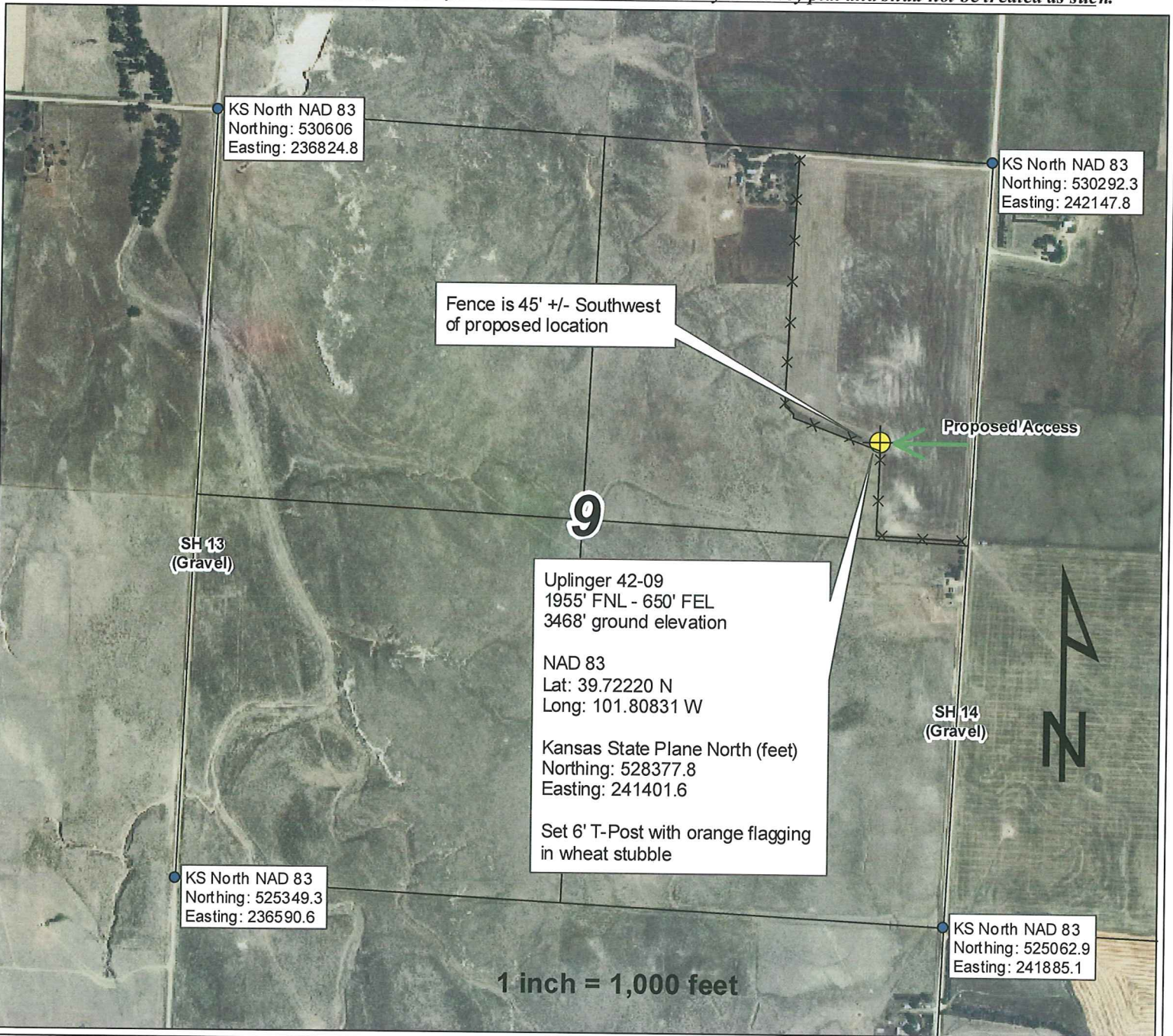
1955' FNL - 650' FEL

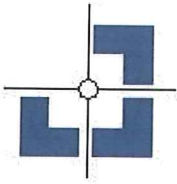
Spot location

3468'

Ground elevation

This drawing is for well construction purposes only. It is not a monumented survey or survey plat and shall not be treated as such.





Three Corners Surveying and Mapping Oil and Gas Well Staking

PO Box 463, Wray, CO 80758, (970) 332-4133

Rosewood Resources, Inc.

Operator

Cheyenne County, KS

County

14 June 2010

Date of field work

E. Johnson

Measured by

E. Johnson

Drawn by

N. Chesley

Auhtorized by

Uplinger 42-09

Well name

9 4S 40W

Section Township Range

1955' FNL - 650' FEL

Spot location

3468'

Ground elevation

Directions

From the intersection of Highway 36 and County Road 15:

-South on County Road '15' 1.5 miles

-West on County Road 'M' 1 mile

-South on County Road '14' 1.4 miles

-West 650 feet across field to proposed location

This drawing is for well construction purposes only. It is not a monumented survey or survey plat and shall not be treated as such.

