

Three Corners Surveying and Mapping Oil and Gas Well Staking

PO Box 463, Wray, CO 80758, (970) 332-4133

Rosewood Resources, Inc.

Operator

Sherman County, KS

County

Philbrick 13-14

Well name

14 9S 40W

Section Township Range

2317' FSL - 1081' FWL

Spot location

3746'

Ground elevation

Directions

From the intersection of Highway 27 and County Road 59:

- West on County Road '59' 1.8 miles
- North on County Road '17' 0.4 miles
- West 1081 feet across field to proposed location

14 June 2010

Date of field work

E. Johnson

Measured by

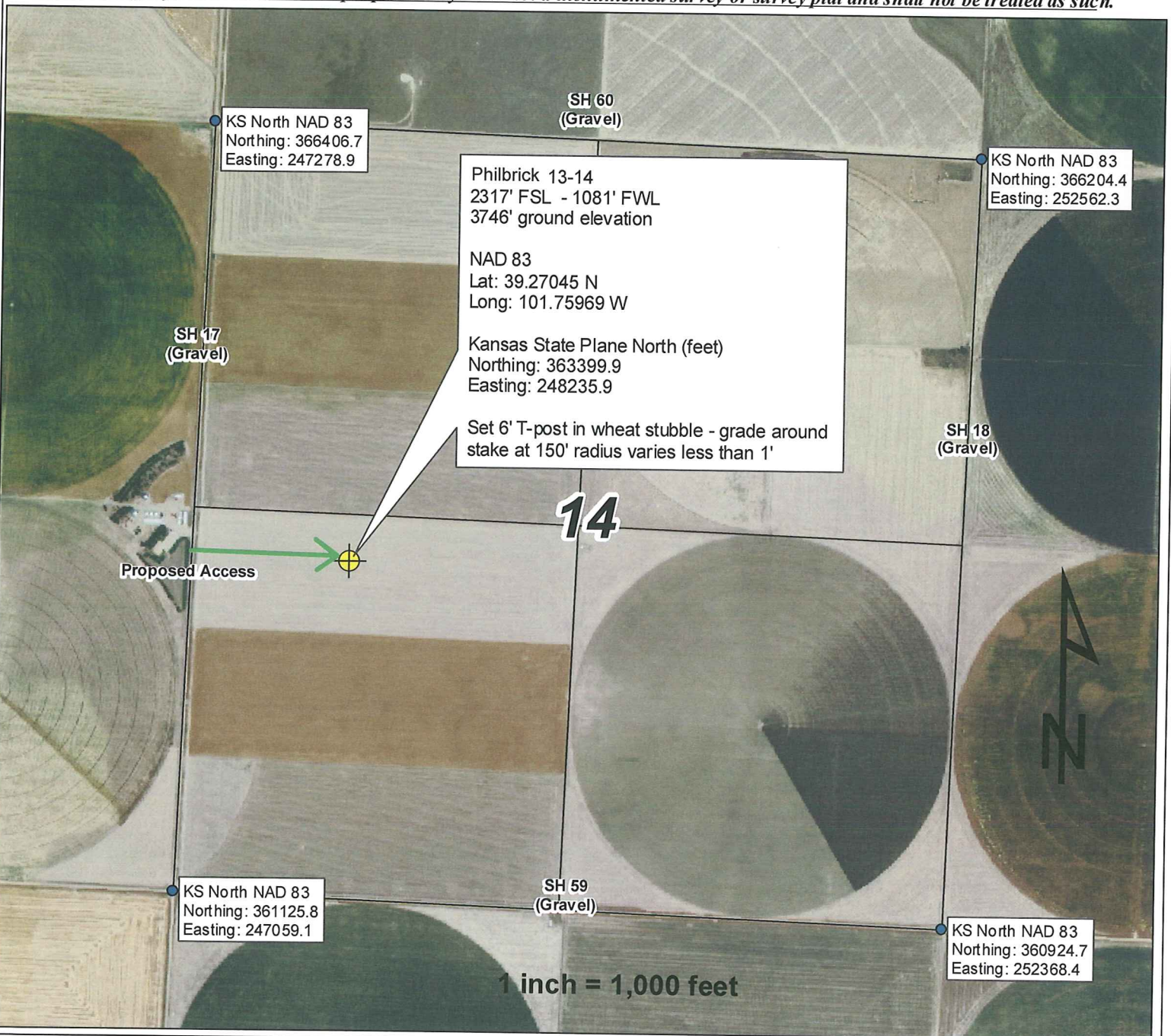
S. Breedlove

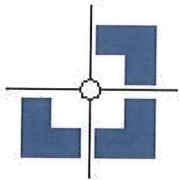
Drawn by

N. Chesley

Auhtorized by

This drawing is for well construction purposes only. It is not a monumented survey or survey plat and shall not be treated as such.





Three Corners Surveying and Mapping Oil and Gas Well Staking

PO Box 463, Wray, CO 80758, (970) 332-4133

Rosewood Resources, Inc.

Operator

Sherman County, KS

County

Philbrick 13-14

Well name

14 9S 40W

Section Township Range

2317' FSL - 1081' FWL

Spot location

3746'

Ground elevation

14 June 2010

Date of field work

E. Johnson

Measured by

S. Breedlove

Drawn by

N. Chesley

Auhtorized by

Directions

From the intersection of Highway 27 and County Road 59:

- West on County Road '59' 1.8 miles
- North on County Road '17' 0.4 miles
- West 1081feet across field to proposed location

This drawing is for well construction purposes only. It is not a monumented survey or survey plat and shall not be treated as such.

