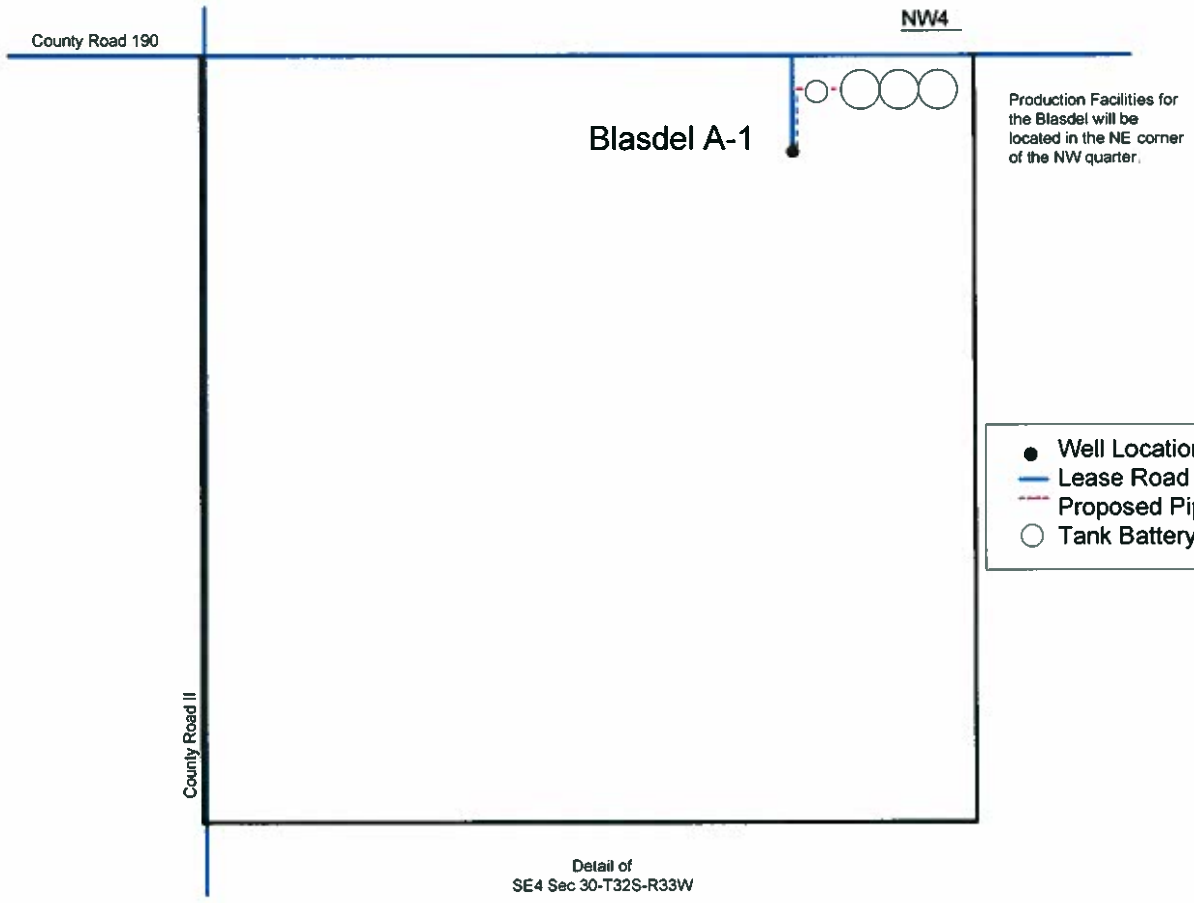
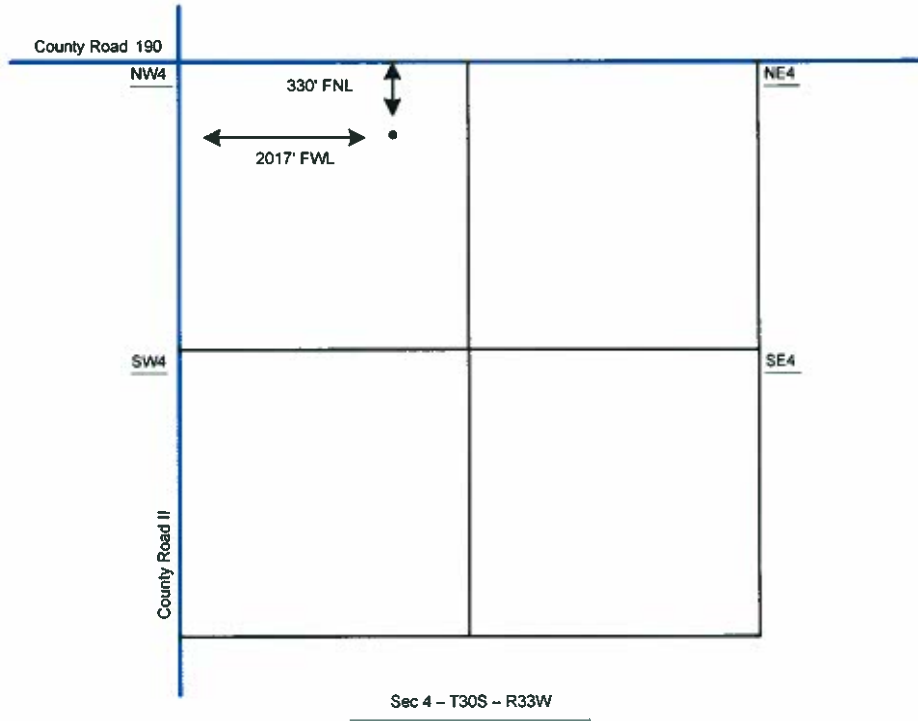


Proposed Plan of Construction
 Blasdel A-1
 Sec 4-T30S-R33W
 Haskell Co, KS



- Well Location
- Lease Road
- - - Proposed Pipeline
- Tank Battery Equipment

Note-Drawing **Not** to Scale

Site Diagram
 Blasdel A-1
 July 13, 2010
 Beth Hickert

