

# Three Corners Surveying and Mapping Oil and Gas Well Staking

PO Box 463, Wray, CO 80758, (970) 332-4133

## Rosewood Resources, Inc.

Operator

## Cheyenne County, KS

County

### Directions

From the intersection of Highway 36 and Hwy 27:

-North on Hwy 27 1.1 miles

-West across pasture 300' +/- to proposed location

**15 July 2010**

Date of field work

**E. Johnson**

Measured by

**E. Johnson**

Drawn by

**N. Chesley**

Auhtorized by

**NEITZEL (C.) 21-20**

Well name

**20 3S 40W**

Section Township Range

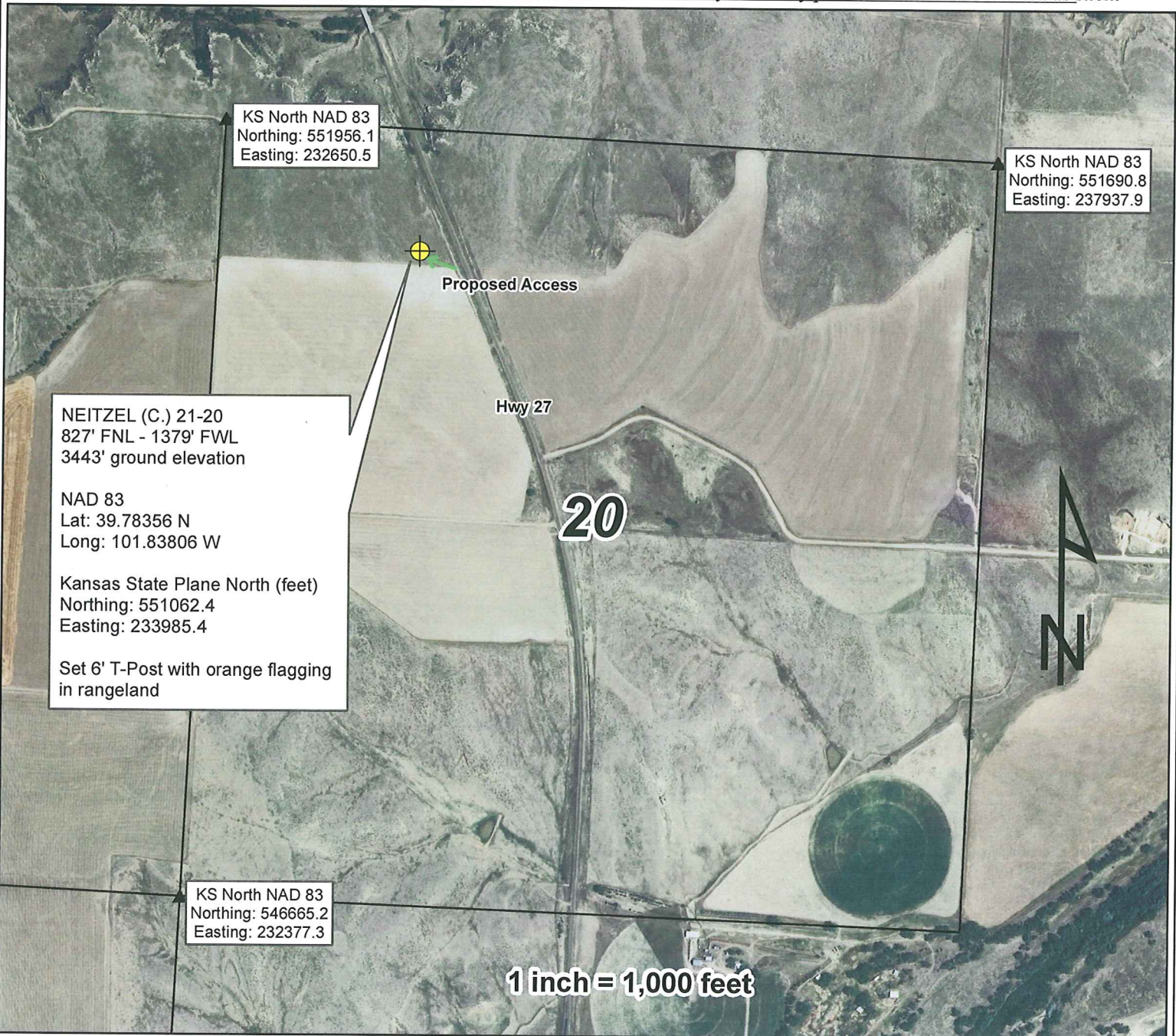
**827' FNL - 1379' FWL**

Spot location

**3443'**

Ground elevation

*This drawing is for well construction purposes only. It is not a monumented survey or survey plat and shall not be treated as such.*



NEITZEL (C.) 21-20  
827' FNL - 1379' FWL  
3443' ground elevation

NAD 83  
Lat: 39.78356 N  
Long: 101.83806 W

Kansas State Plane North (feet)  
Northing: 551062.4  
Easting: 233985.4

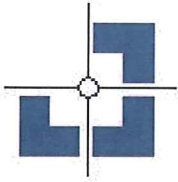
Set 6' T-Post with orange flagging  
in rangeland

KS North NAD 83  
Northing: 551956.1  
Easting: 232650.5

KS North NAD 83  
Northing: 551690.8  
Easting: 237937.9

KS North NAD 83  
Northing: 546665.2  
Easting: 232377.3

1 inch = 1,000 feet



# Three Corners Surveying and Mapping Oil and Gas Well Staking

PO Box 463, Wray, CO 80758, (970) 332-4133

Rosewood Resources, Inc.

Operator

Cheyenne County, KS

County

NEITZEL (C.) 21-20

Well name

20 3S 40W

Section Township Range

827' FNL - 1379' FWL

Spot location

3443'

Ground elevation

### Directions

From the intersection of Highway 36 and Hwy 27:

-North on Hwy 27 1.1 miles

-West across pasture 300' +/- to proposed location

15 July 2010

Date of field work

E. Johnson

Measured by

E. Johnson

Drawn by

N. Chesley

Auhtorized by

*This drawing is for well construction purposes only. It is not a monumented survey or survey plat and shall not be treated as such.*

