

ADVANTAGE ELEVATIONS

OIL FIELD SURVEYORS

BOX 8604 - PRATT, KS 67124
(620) 672-6491

719101
INVOICE NO.

FALCON EXPLORATION INC
OPERATOR

3-11
NO.

Fulton
FARM

Clark
COUNTY

11 31s 22w
S T R

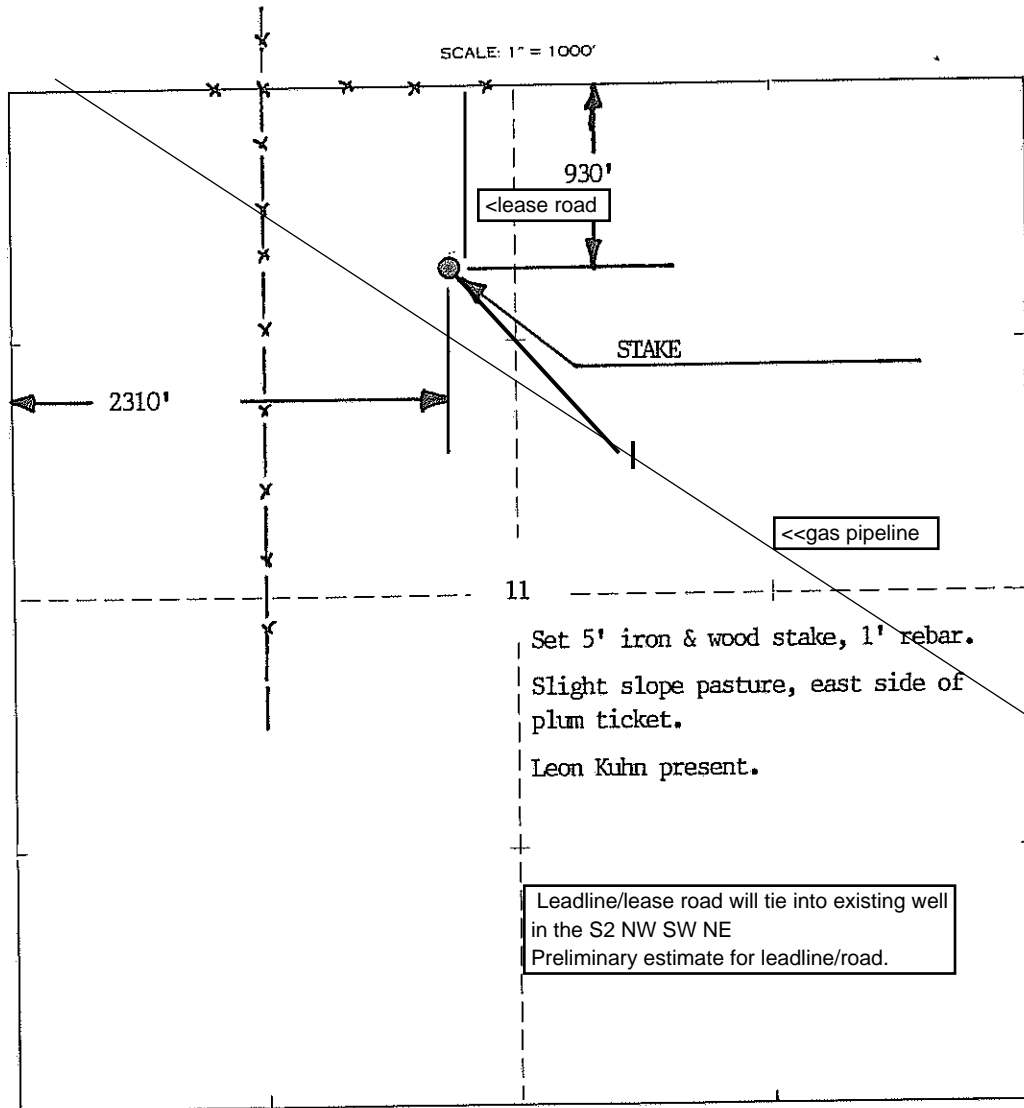
930' FNL & 2310' FWL
LOCATION

ELEVATION: 2151' gr



FALCON EXPLORATION INC.
125 N Market St, Ste 1252
Wichita KS 67202

AUTHORIZED BY: Jason Mitchell



Staked 7/26/10