



**Notice:** Fill out COMPLETELY and return to Conservation Division at the address below within 60 days from plugging date.

KANSAS CORPORATION COMMISSION 1041485  
OIL & GAS CONSERVATION DIVISION

Form CP-4  
March 2009

Type or Print on this Form  
Form must be Signed  
All blanks must be Filled

**WELL PLUGGING RECORD**  
K.A.R. 82-3-117

OPERATOR: License #: \_\_\_\_\_  
 Name: \_\_\_\_\_  
 Address 1: \_\_\_\_\_  
 Address 2: \_\_\_\_\_  
 City: \_\_\_\_\_ State: \_\_\_\_\_ Zip: \_\_\_\_\_ + \_\_\_\_\_  
 Contact Person: \_\_\_\_\_  
 Phone: ( \_\_\_\_\_ ) \_\_\_\_\_  
 Type of Well: (Check one)  Oil Well  Gas Well  OG  D&A  Cathodic  
 Water Supply Well  Other: \_\_\_\_\_  SWD Permit #: \_\_\_\_\_  
 ENHR Permit #: \_\_\_\_\_  Gas Storage Permit #: \_\_\_\_\_  
 Is ACO-1 filed?  Yes  No If not, is well log attached?  Yes  No  
 Producing Formation(s): List All (If needed attach another sheet)  
 \_\_\_\_\_ Depth to Top: \_\_\_\_\_ Bottom: \_\_\_\_\_ T.D. \_\_\_\_\_  
 \_\_\_\_\_ Depth to Top: \_\_\_\_\_ Bottom: \_\_\_\_\_ T.D. \_\_\_\_\_  
 \_\_\_\_\_ Depth to Top: \_\_\_\_\_ Bottom: \_\_\_\_\_ T.D. \_\_\_\_\_

API No. 15 - \_\_\_\_\_  
 Spot Description: \_\_\_\_\_  
 \_\_\_\_\_ - \_\_\_\_\_ - \_\_\_\_\_ Sec. \_\_\_\_\_ Twp. \_\_\_\_\_ S. R. \_\_\_\_\_  East  West  
 \_\_\_\_\_ Feet from  North /  South Line of Section  
 \_\_\_\_\_ Feet from  East /  West Line of Section  
 Footages Calculated from Nearest Outside Section Corner:  
 NE  NW  SE  SW  
 County: \_\_\_\_\_  
 Lease Name: \_\_\_\_\_ Well #: \_\_\_\_\_  
 Date Well Completed: \_\_\_\_\_  
 The plugging proposal was approved on: \_\_\_\_\_ (Date)  
 by: \_\_\_\_\_ (KCC District Agent's Name)  
 Plugging Commenced: \_\_\_\_\_  
 Plugging Completed: \_\_\_\_\_

Show depth and thickness of all water, oil and gas formations.

| Oil, Gas or Water Records |         | Casing Record (Surface, Conductor & Production) |      |               |            |
|---------------------------|---------|-------------------------------------------------|------|---------------|------------|
| Formation                 | Content | Casing                                          | Size | Setting Depth | Pulled Out |
|                           |         |                                                 |      |               |            |
|                           |         |                                                 |      |               |            |
|                           |         |                                                 |      |               |            |
|                           |         |                                                 |      |               |            |

Describe in detail the manner in which the well is plugged, indicating where the mud fluid was placed and the method or methods used in introducing it into the hole. If cement or other plugs were used, state the character of same depth placed from (bottom), to (top) for each plug set.

Plugging Contractor License #: \_\_\_\_\_ Name: \_\_\_\_\_  
 Address 1: \_\_\_\_\_ Address 2: \_\_\_\_\_  
 City: \_\_\_\_\_ State: \_\_\_\_\_ Zip: \_\_\_\_\_ + \_\_\_\_\_  
 Phone: ( \_\_\_\_\_ ) \_\_\_\_\_  
 Name of Party Responsible for Plugging Fees: \_\_\_\_\_  
 State of \_\_\_\_\_ County, \_\_\_\_\_, ss.  
 \_\_\_\_\_  Employee of Operator or  Operator on above-described well,  
 (Print Name)

being first duly sworn on oath, says: That I have knowledge of the facts statements, and matters herein contained, and the log of the above-described well is as filed, and the same are true and correct, so help me God.

Submitted Electronically

Mail to: KCC - Conservation Division, 130 S. Market - Room 2078, Wichita, Kansas 67202

# Cementing Job Summary

*The Road to Excellence Starts with Safety*

|                                       |  |                     |                                     |                                   |  |                        |  |
|---------------------------------------|--|---------------------|-------------------------------------|-----------------------------------|--|------------------------|--|
| Sold To #: 348223                     |  | Ship To #: 2786610  |                                     | Quote #:                          |  | Sales Order #: 7425213 |  |
| Customer: EOG RESOURCES INC EBUSINESS |  |                     |                                     | Customer Rep: Sessions, Jackie    |  |                        |  |
| Well Name: Helen                      |  |                     | Well #: 18#1                        |                                   |  | API/UWI #:             |  |
| Field:                                |  | City (SAP): HUGOTON |                                     | County/Parish: Morton             |  | State: Kansas          |  |
| Contractor: .KENAI                    |  |                     | Rig/Platform Name/Num: 55           |                                   |  |                        |  |
| Job Purpose: Plug to Abandon Service  |  |                     |                                     |                                   |  |                        |  |
| Well Type: Development Well           |  |                     |                                     | Job Type: Plug to Abandon Service |  |                        |  |
| Sales Person: BLAKEY, JOSEPH          |  |                     | Srvc Supervisor: WILTSHIRE, MERSHEK |                                   |  | MBU ID Emp #: 195811   |  |

### Job Personnel

| HES Emp Name               | Exp Hrs | Emp #  | HES Emp Name     | Exp Hrs | Emp #  | HES Emp Name             | Exp Hrs | Emp #  |
|----------------------------|---------|--------|------------------|---------|--------|--------------------------|---------|--------|
| CARRILLO, EDUARDO Carrillo | 13      | 371263 | TORRES, CLEMENTE | 13      | 344233 | WILTSHIRE, MERSHEK Tonje | 13      | 195811 |

### Equipment

| HES Unit # | Distance-1 way | HES Unit # | Distance-1 way | HES Unit # | Distance-1 way | HES Unit # | Distance-1 way |
|------------|----------------|------------|----------------|------------|----------------|------------|----------------|
|            |                |            |                |            |                |            |                |

### Job Hours

| Date | On Location Hours | Operating Hours | Date | On Location Hours | Operating Hours | Date | On Location Hours | Operating Hours |
|------|-------------------|-----------------|------|-------------------|-----------------|------|-------------------|-----------------|
|      |                   |                 |      |                   |                 |      |                   |                 |

**TOTAL** *Total is the sum of each column separately*

### Job

### Job Times

| Formation Name              | Job      |                   |            | Date            | Time            | Time Zone |     |
|-----------------------------|----------|-------------------|------------|-----------------|-----------------|-----------|-----|
| Formation Depth (MD) Top    | Bottom   |                   | Called Out | 09 - Jun - 2010 | 00:00           | CST       |     |
| Form Type                   | BHST     |                   |            | On Location     | 09 - Jun - 2010 | 03:00     | CST |
| Job depth MD                | 1650. ft | Job Depth TVD     | 1650. ft   | Job Started     | 09 - Jun - 2010 | 11:15     | CST |
| Water Depth                 |          | Wk Ht Above Floor |            | Job Completed   | 09 - Jun - 2010 | 14:20     | CST |
| Perforation Depth (MD) From |          | To                |            | Departed Loc    | 09 - Jun - 2010 | 16:00     | CST |

### Well Data

| Description          | New / Used | Max pressure psig | Size in | ID in | Weight lbm/ft | Thread | Grade | Top MD ft | Bottom MD ft | Top TVD ft | Bottom TVD ft |
|----------------------|------------|-------------------|---------|-------|---------------|--------|-------|-----------|--------------|------------|---------------|
| Cement Plug          | Unknown    |                   |         |       |               |        |       |           | 60.          |            |               |
| Cement Plug          | Unknown    |                   |         |       |               |        |       | 690.      | 690.         |            |               |
| Cement Plug          | Unknown    |                   |         |       |               |        |       | 1740.     | 1740.        |            |               |
| Production Open Hole |            |                   |         | 7.875 |               |        |       | 1616.     | 6000.        |            |               |

### Tools and Accessories

| Type         | Size | Qty | Make | Depth | Type        | Size | Qty | Make | Depth | Type           | Size | Qty | Make |
|--------------|------|-----|------|-------|-------------|------|-----|------|-------|----------------|------|-----|------|
| Guide Shoe   |      |     |      |       | Packer      |      |     |      |       | Top Plug       |      |     |      |
| Float Shoe   |      |     |      |       | Bridge Plug |      |     |      |       | Bottom Plug    |      |     |      |
| Float Collar |      |     |      |       | Retainer    |      |     |      |       | SSR plug set   |      |     |      |
| Insert Float |      |     |      |       |             |      |     |      |       | Plug Container |      |     |      |
| Stage Tool   |      |     |      |       |             |      |     |      |       | Centralizers   |      |     |      |

### Miscellaneous Materials

| Gelling Agt   | Conc | Surfactant | Conc | Acid Type | Qty  | Conc | % |
|---------------|------|------------|------|-----------|------|------|---|
| Treatment Fld | Conc | Inhibitor  | Conc | Sand Type | Size | Qty  |   |

# Cementing Job Summary

| Fluid Data                               |                                    |                                 |        |                                   |                        |                           |                  |              |                        |
|------------------------------------------|------------------------------------|---------------------------------|--------|-----------------------------------|------------------------|---------------------------|------------------|--------------|------------------------|
| Stage/Plug #: 1                          |                                    |                                 |        |                                   |                        |                           |                  |              |                        |
| Fluid #                                  | Stage Type                         | Fluid Name                      | Qty    | Qty uom                           | Mixing Density lbm/gal | Yield ft <sup>3</sup> /sk | Mix Fluid Gal/sk | Rate bbl/min | Total Mix Fluid Gal/sk |
| 1                                        | PLUG AT 1740                       | POZ PREMIUM 40/60 - SBM (15075) | 100.0  | sacks                             | 13.5                   | 1.59                      | 8.01             |              | 8.01                   |
|                                          | 2 %                                | BENTONITE, BULK (100003682)     |        |                                   |                        |                           |                  |              |                        |
|                                          | 0.25 lbm                           | POLY-E-FLAKE (101216940)        |        |                                   |                        |                           |                  |              |                        |
|                                          | 8.007 Gal                          | FRESH WATER                     |        |                                   |                        |                           |                  |              |                        |
| 2                                        | PLUG AT 690                        | POZ PREMIUM 40/60 - SBM (15075) | 50.0   | sacks                             | 13.5                   | 1.59                      | 8.01             |              | 8.01                   |
|                                          | 2 %                                | BENTONITE, BULK (100003682)     |        |                                   |                        |                           |                  |              |                        |
|                                          | 0.25 lbm                           | POLY-E-FLAKE (101216940)        |        |                                   |                        |                           |                  |              |                        |
|                                          | 8.007 Gal                          | FRESH WATER                     |        |                                   |                        |                           |                  |              |                        |
| 3                                        | PLUG AT 60                         | POZ PREMIUM 40/60 - SBM (15075) | 20.0   | sacks                             | 13.5                   | 1.59                      | 8.01             |              | 8.01                   |
|                                          | 2 %                                | BENTONITE, BULK (100003682)     |        |                                   |                        |                           |                  |              |                        |
|                                          | 0.25 lbm                           | POLY-E-FLAKE (101216940)        |        |                                   |                        |                           |                  |              |                        |
|                                          | 8.007 Gal                          | FRESH WATER                     |        |                                   |                        |                           |                  |              |                        |
| 4                                        | PLUG: RAT 30 sk & MOUSE HOLE 20 sk | POZ PREMIUM 40/60 - SBM (15075) | 50.0   | sacks                             | 13.5                   | 1.59                      | 8.01             |              | 8.01                   |
|                                          | 2 %                                | BENTONITE, BULK (100003682)     |        |                                   |                        |                           |                  |              |                        |
|                                          | 0.25 lbm                           | POLY-E-FLAKE (101216940)        |        |                                   |                        |                           |                  |              |                        |
|                                          | 8.007 Gal                          | FRESH WATER                     |        |                                   |                        |                           |                  |              |                        |
| Calculated Values                        |                                    | Pressures                       |        | Volumes                           |                        |                           |                  |              |                        |
| Displacement                             |                                    | Shut In: Instant                |        | Lost Returns                      |                        | Cement Slurry             |                  | Pad          |                        |
| Top Of Cement                            |                                    | 5 Min                           |        | Cement Returns                    |                        | Actual Displacement       |                  | Treatment    |                        |
| Frac Gradient                            |                                    | 15 Min                          |        | Spacers                           |                        | Load and Breakdown        |                  | Total Job    |                        |
| Rates                                    |                                    |                                 |        |                                   |                        |                           |                  |              |                        |
| Circulating                              |                                    | Mixing                          |        | Displacement                      |                        | Avg. Job                  |                  |              |                        |
| Cement Left In Pipe                      | Amount                             | 0 ft                            | Reason | Shoe Joint                        |                        |                           |                  |              |                        |
| Frac Ring # 1 @                          | ID                                 | Frac ring # 2 @                 | ID     | Frac Ring # 3 @                   | ID                     | Frac Ring # 4 @           | ID               |              |                        |
| The Information Stated Herein Is Correct |                                    |                                 |        | Customer Representative Signature |                        |                           |                  |              |                        |

# Cementing Job Log

*The Road to Excellence Starts with Safety*

|                                       |  |                     |                                     |                                |                |                        |  |
|---------------------------------------|--|---------------------|-------------------------------------|--------------------------------|----------------|------------------------|--|
| Sold To #: 348223                     |  | Ship To #: 2786610  |                                     | Quote #:                       |                | Sales Order #: 7425213 |  |
| Customer: EOG RESOURCES INC EBUSINESS |  |                     |                                     | Customer Rep: Sessions, Jackie |                |                        |  |
| Well Name: Helen                      |  |                     | Well #: 18#1                        |                                | API/UWI #:     |                        |  |
| Field:                                |  | City (SAP): HUGOTON |                                     | County/Parish: Morton          |                | State: Kansas          |  |
| Legal Description:                    |  |                     |                                     |                                |                |                        |  |
| Lat:                                  |  |                     |                                     | Long:                          |                |                        |  |
| Contractor: KENAI                     |  |                     | Rig/Platform Name/Num: 55           |                                |                |                        |  |
| Job Purpose: Plug to Abandon Service  |  |                     |                                     |                                | Ticket Amount: |                        |  |
| Well Type: Development Well           |  |                     | Job Type: Plug to Abandon Service   |                                |                |                        |  |
| Sales Person: BLAKEY, JOSEPH          |  |                     | Srvc Supervisor: WILTSHIRE, MERSHEK |                                |                | MBU ID Emp #: 195811   |  |

| Activity Description                      | Date/Time           | Cht # | Rate bbl/min | Volume bbl |       | Pressure psig |        | Comments                                 |
|-------------------------------------------|---------------------|-------|--------------|------------|-------|---------------|--------|------------------------------------------|
|                                           |                     |       |              | Stage      | Total | Tubing        | Casing |                                          |
| Arrive at Location from Other Job or Site | 06/09/2010<br>03:00 |       |              |            |       |               |        |                                          |
| Pre-Job Safety Meeting                    | 06/09/2010<br>03:15 |       |              |            |       |               |        |                                          |
| Start Job                                 | 06/09/2010<br>11:15 |       |              |            |       |               |        | PLUG @ 1757'                             |
| Test Lines                                | 06/09/2010<br>11:16 |       |              |            |       | 2500.0        |        |                                          |
| Circulate Well                            | 06/09/2010<br>11:18 |       | 10.5         | 70         |       | 650.0         |        | RIG WATER                                |
| Pump Cement                               | 06/09/2010<br>11:25 |       | 5.5          | 28         |       | 115.0         |        | 100 SKS 40/60 POZ @ 13.5#                |
| Pump Displacement                         | 06/09/2010<br>11:30 |       | 5.5          | 18         |       | .0            |        | END CEMENT /// DISP WITH WATER           |
| Other                                     | 06/09/2010<br>11:33 |       | 5.5          |            | 16    | .0            |        | END DISPLACEMENT /// LAY DOWN DRILL PIPE |
| Other                                     | 06/09/2010<br>12:12 |       |              |            |       |               |        | PLUG @ 688'                              |
| Circulate Well                            | 06/09/2010<br>12:12 |       | 5            | 27         |       | 80.0          |        | RIG WATER                                |
| Pump Cement                               | 06/09/2010<br>12:17 |       | 5            | 14         |       | 80.0          |        | 50 SKS 40/60 POZ @ 13.5#                 |
| Pump Displacement                         | 06/09/2010<br>12:20 |       | 5            | 6          |       | .0            |        | END CEMENT // DISPL. WITH WATER          |
| Other                                     | 06/09/2010<br>12:21 |       | 5            |            | 4     | .0            |        | END DISPLACEMENT // LAYDOWN DRILL PIPE   |
| Other                                     | 06/09/2010<br>13:58 |       |              |            |       |               |        | PLUG @ 60' , RAT & MOUSE                 |
| Pump Cement                               | 06/09/2010<br>13:58 |       | 5            | 6          |       | 20.0          |        | 20 SKS 40/60 POZ @ 13.5#                 |
| Pump Cement                               | 06/09/2010<br>14:04 |       | 2            | 8          |       | .0            |        | 30 SKS 40/60 POZ @ 13.5#                 |

Sold TO # : 348223

Ship TO # : 2786610

Quote # :

Sales Order # : 7425213

SUMMIT Version: 7.20.130

Wednesday, June 09, 2010 02:40:00

HALLIBURTON

# Cementing Job Log

| Activity Description | Date/Time           | Cht # | Rate bbl/min | Volume bbl |       | Pressure psig |        | Comments                    |
|----------------------|---------------------|-------|--------------|------------|-------|---------------|--------|-----------------------------|
|                      |                     |       |              | Stage      | Total | Tubing        | Casing |                             |
| Pump Cement          | 06/09/2010<br>14:10 |       | 2            | 6          |       | .0            |        | 20 SKS 40/60 POZ @<br>13.5# |
| Other                | 06/09/2010<br>14:16 |       |              |            |       |               |        | END CEMENT                  |
| End Job              | 06/09/2010<br>14:20 |       |              |            |       |               |        |                             |

Sold To # : 348223

Ship To # : 2786610

Quote # :

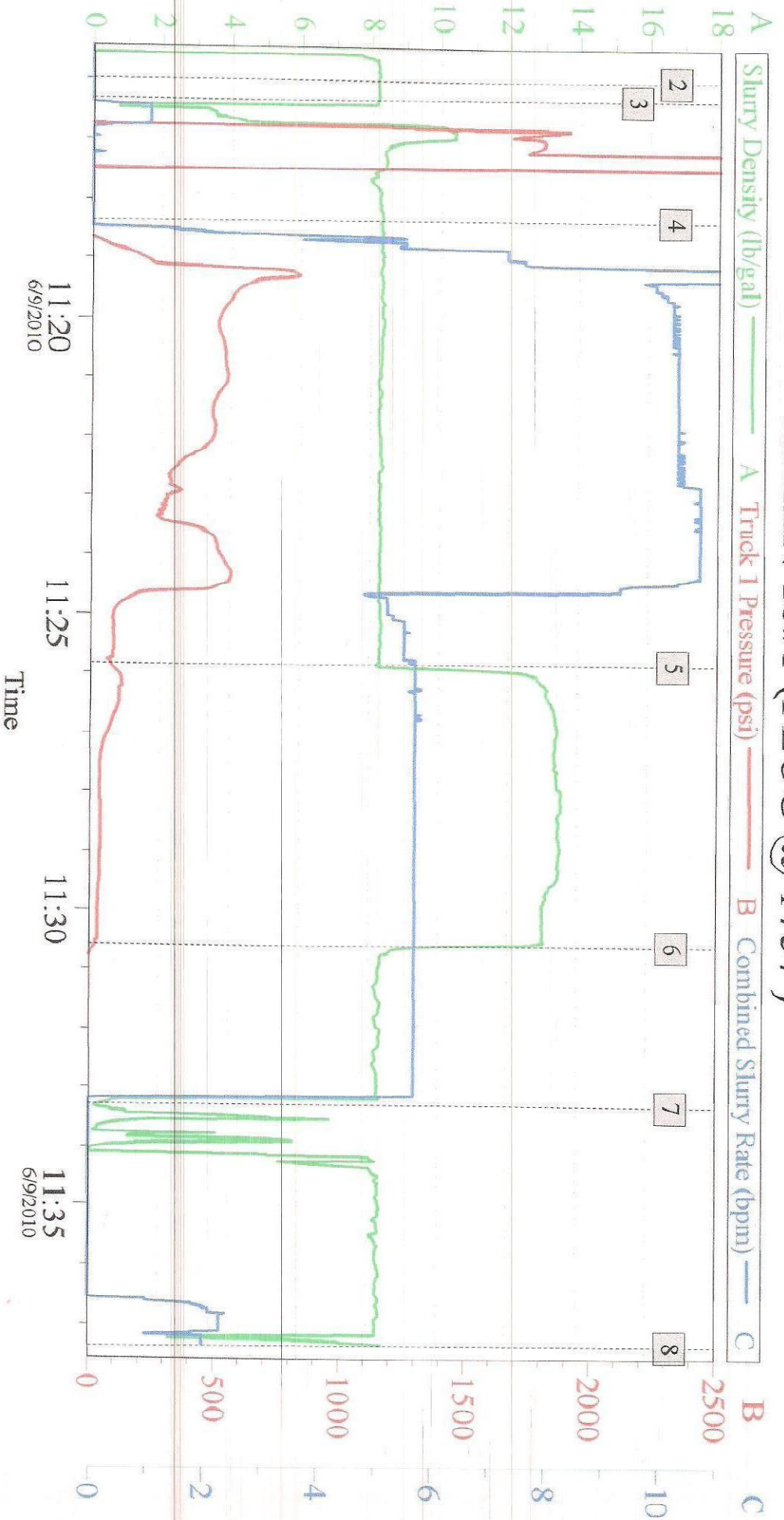
Sales Order # : 7425213

SUMMIT Version: 7.20.130

Wednesday, June 09, 2010 02:40:00



# FOG RESOURCE INC HELEN 18#1 (PLUG @ 1757')



## Global Event Log

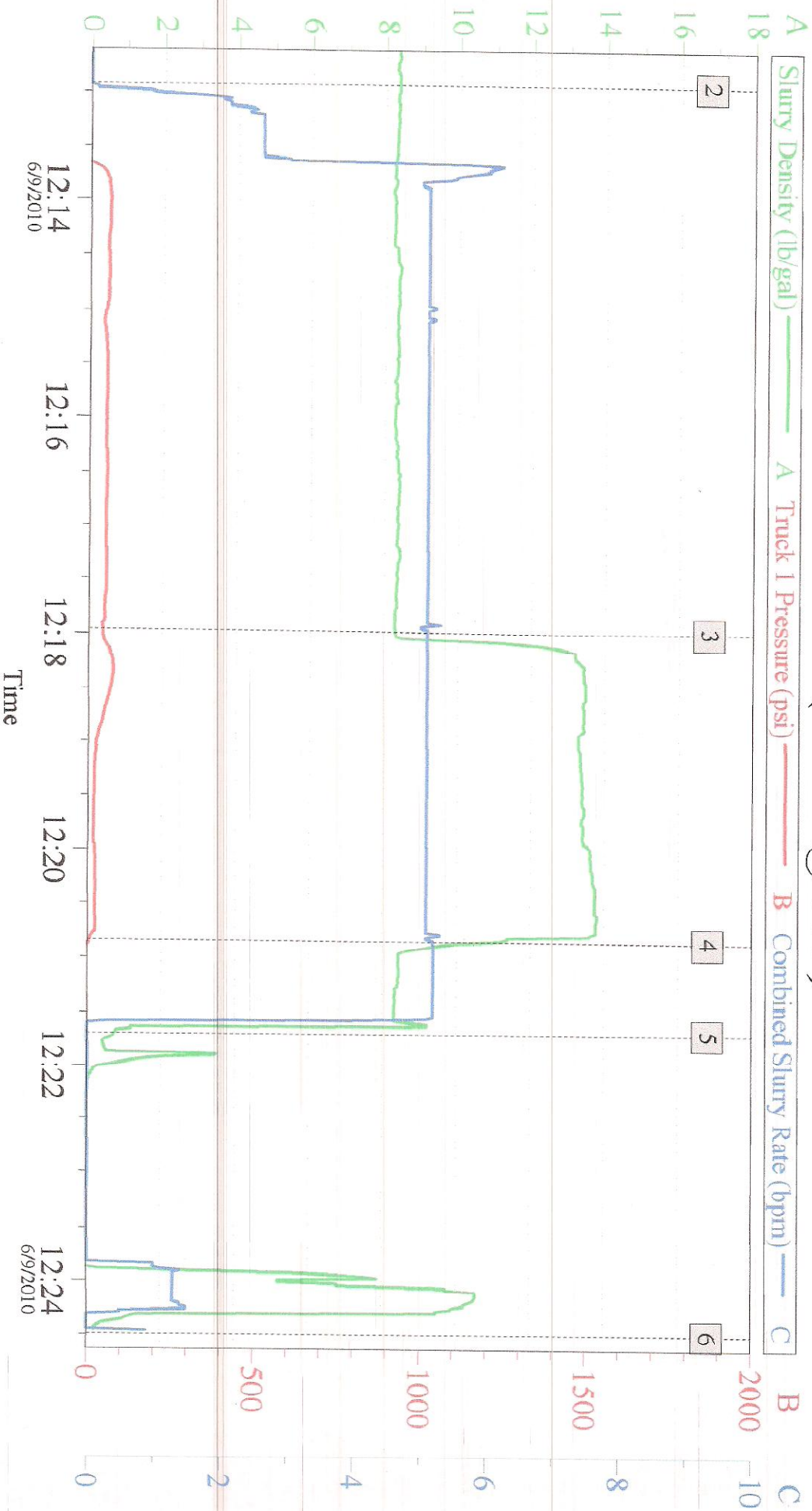
|   |             |          |   |                   |          |   |                |          |
|---|-------------|----------|---|-------------------|----------|---|----------------|----------|
| 2 | Start Job   | 11:15:59 | 3 | Test Lines        | 11:16:19 | 4 | Circulate Well | 11:18:21 |
| 5 | Pump Cement | 11:25:50 | 6 | Pump Displacement | 11:30:35 | 7 | Other          | 11:33:18 |
| 8 | Ending Job  | 11:37:22 |   |                   |          |   |                |          |

Customer:  
Well Description:

Job Date: 09-Jun-2010  
UWT:

Sales Order #: 7425213

# EOG RESOURCES INC HELEN 18#1 (PLUG @ 688')



## Global Event Log

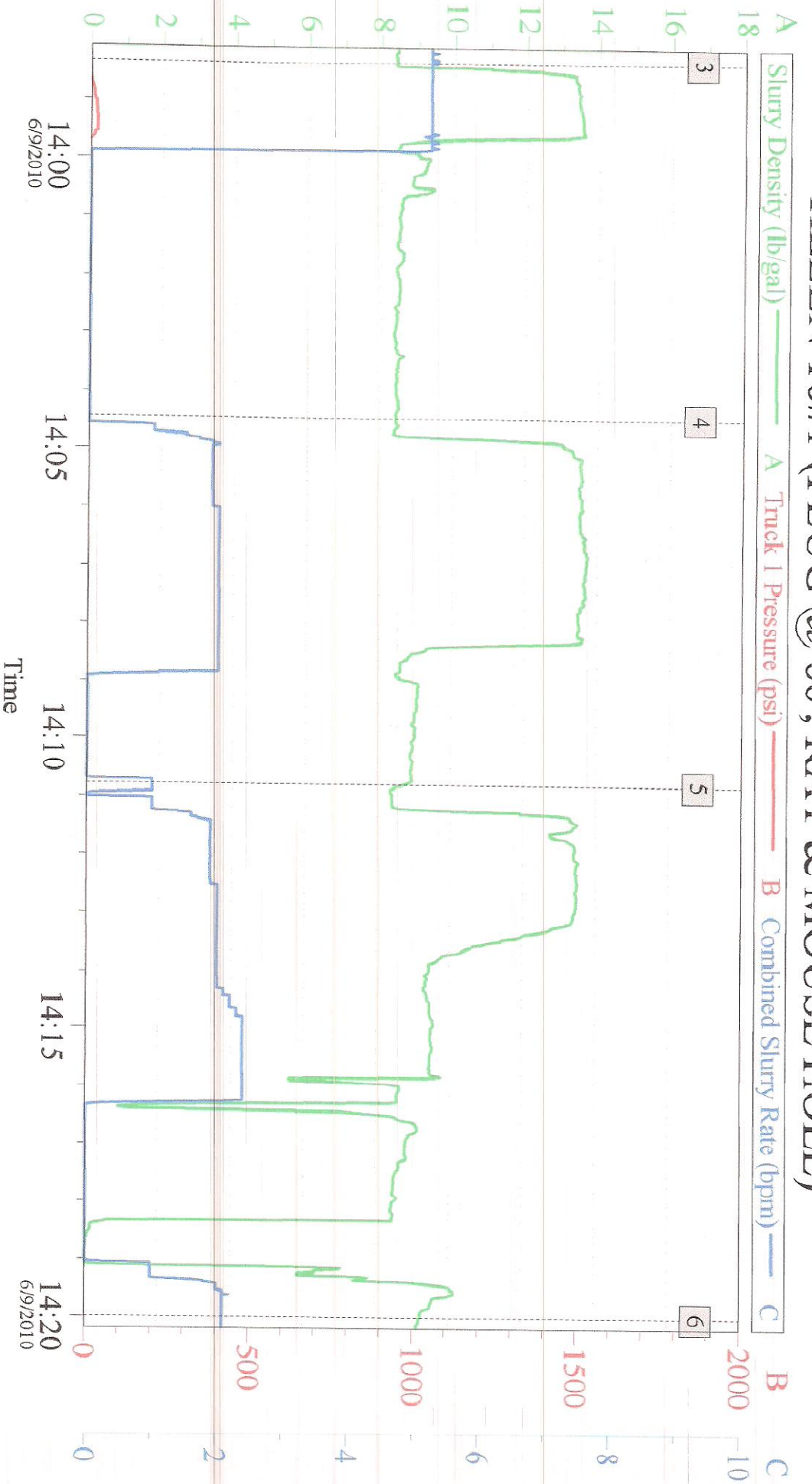
|                            |                |          |                            |             |          |                            |                   |          |
|----------------------------|----------------|----------|----------------------------|-------------|----------|----------------------------|-------------------|----------|
| <input type="checkbox"/> 2 | Circulate Well | 12:12:56 | <input type="checkbox"/> 3 | Pump Cement | 12:17:58 | <input type="checkbox"/> 4 | Pump Displacement | 12:20:51 |
| <input type="checkbox"/> 5 | Other          | 12:21:42 | <input type="checkbox"/> 6 | Ending Job  | 12:24:30 |                            |                   |          |

Customer: Job Date: 09-Jun-2010 Sales Order #: 7425213  
 Well Description: UWI.



EOG RESOURCES INC

HELEN 18#1 (PLUG @ 60', RAT & MOUSE HOLE)



Global Event Log

|   |             |          |   |             |          |
|---|-------------|----------|---|-------------|----------|
| 3 | Pump Cement | 13:58:20 | 4 | Pump Cement | 14:04:26 |
| 5 | Pump Cement | 14:10:47 | 6 | End Job     | 14:20:00 |

Customer:  
Well Description:

Job Date: 09-Jun-2010  
UWT:

Sales Order #: 7425213