



Notice: Fill out COMPLETELY and return to Conservation Division at the address below within 60 days from plugging date.

KANSAS CORPORATION COMMISSION 1041487
OIL & GAS CONSERVATION DIVISION
WELL PLUGGING RECORD
 K.A.R. 82-3-117

Form CP-4
March 2009

Type or Print on this Form
Form must be Signed
All blanks must be Filled

OPERATOR: License #: _____
 Name: _____
 Address 1: _____
 Address 2: _____
 City: _____ State: _____ Zip: _____ + _____
 Contact Person: _____
 Phone: (_____) _____
 Type of Well: (Check one) Oil Well Gas Well OG D&A Cathodic
 Water Supply Well Other: _____ SWD Permit #: _____
 ENHR Permit #: _____ Gas Storage Permit #: _____
 Is ACO-1 filed? Yes No If not, is well log attached? Yes No
 Producing Formation(s): List All (If needed attach another sheet)
 _____ Depth to Top: _____ Bottom: _____ T.D. _____
 _____ Depth to Top: _____ Bottom: _____ T.D. _____
 _____ Depth to Top: _____ Bottom: _____ T.D. _____

API No. 15 - _____
 Spot Description: _____
 _____ - _____ - _____ Sec. _____ Twp. _____ S. R. _____ East West
 _____ Feet from North / South Line of Section
 _____ Feet from East / West Line of Section
 Footages Calculated from Nearest Outside Section Corner:
 NE NW SE SW
 County: _____
 Lease Name: _____ Well #: _____
 Date Well Completed: _____
 The plugging proposal was approved on: _____ (Date)
 by: _____ (KCC District Agent's Name)
 Plugging Commenced: _____
 Plugging Completed: _____

Show depth and thickness of all water, oil and gas formations.

Oil, Gas or Water Records		Casing Record (Surface, Conductor & Production)			
Formation	Content	Casing	Size	Setting Depth	Pulled Out

Describe in detail the manner in which the well is plugged, indicating where the mud fluid was placed and the method or methods used in introducing it into the hole. If cement or other plugs were used, state the character of same depth placed from (bottom), to (top) for each plug set.

Plugging Contractor License #: _____ Name: _____
 Address 1: _____ Address 2: _____
 City: _____ State: _____ Zip: _____ + _____
 Phone: (_____) _____
 Name of Party Responsible for Plugging Fees: _____
 State of _____ County, _____, ss.
 _____ Employee of Operator or Operator on above-described well,
 (Print Name)

being first duly sworn on oath, says: That I have knowledge of the facts statements, and matters herein contained, and the log of the above-described well is as filed, and the same are true and correct, so help me God.

Submitted Electronically

Mail to: KCC - Conservation Division, 130 S. Market - Room 2078, Wichita, Kansas 67202

Cementing Job Summary

The Road to Excellence Starts with Safety

Sold To #: 348223	Ship To #: 2794388	Quote #:	Sales Order #: 7507304
Customer: EOG RESOURCES INC EBUSINESS		Customer Rep: Knox, Mike	
Well Name: Black	Well #: 33 #1	API/UWI #:	
Field:	City (SAP): LIBERAL	County/Parish: Seward	State: Kansas
Contractor: ABERCROMBIE		Rig/Platform Name/Num: 55	
Job Purpose: Plug to Abandon Service			
Well Type: Development Well		Job Type: Plug to Abandon Service	
Sales Person: HESTON, MYRON		Srv Supervisor: COOK, TOMMY	MBU ID Emp #: 279568

Job Personnel

HES Emp Name	Exp Hrs	Emp #	HES Emp Name	Exp Hrs	Emp #	HES Emp Name	Exp Hrs	Emp #
CARRILLO, EDUARDO Carrillo	7	371263	COOK, TOMMY L	7	279568	PORTILLO, CESAR S	7	457847

Equipment

HES Unit #	Distance-1 way	HES Unit #	Distance-1 way	HES Unit #	Distance-1 way	HES Unit #	Distance-1 way
11133700	25 mile						

Job Hours

Date	On Location Hours	Operating Hours	Date	On Location Hours	Operating Hours	Date	On Location Hours	Operating Hours
7-16-10	3	2	7-17-10	4	3			

TOTAL Total is the sum of each column separately

Job

Job Times

Formation Name	Formation Depth (MD) Top	Bottom	Form Type	Job depth MD	Job Depth TVD	Water Depth	Perforation Depth (MD) From	To	Date	Time	Time Zone
			BHST	1728. ft	1728. ft	2. ft			16 - Jul - 2010	18:00	CST
									16 - Jul - 2010	21:45	CST
									16 - Jul - 2010	00:00	CST
									17 - Jul - 2010	00:00	CST
									17 - Jul - 2010	00:00	CST

Well Data

Description	New / Used	Max pressure psig	Size in	ID in	Weight lbm/ft	Thread	Grade	Top MD ft	Bottom MD ft	Top TVD ft	Bottom TVD ft
Cement Plug	Unknown								60.		
Cement Plug	Unknown							450.	450.		
Cement Plug	Unknown							650.	650.		
Cement Plug	Unknown							1730.	1728.		
Production Open Hole				7.875				1800.	6000.		

Tools and Accessories

Type	Size	Qty	Make	Depth	Type	Size	Qty	Make	Depth	Type	Size	Qty	Make
Guide Shoe					Packer					Top Plug			
Float Shoe					Bridge Plug					Bottom Plug			
Float Collar					Retainer					SSR plug set			
Insert Float										Plug Container			
Stage Tool										Centralizers			

Miscellaneous Materials

Gelling Agt	Conc	Surfactant	Conc	Acid Type	Qty	Conc	%
Treatment Fld	Conc	Inhibitor	Conc	Sand Type	Size	Conc	Qty

Cementing Job Summary

				Fluid Data						
Stage/Plug #: 1										
Fluid #	Stage Type	Fluid Name	Qty	Qty uom	Mixing Density lbm/gal	Yield ft ³ /sk	Mix Fluid Gal/sk	Rate bbl/min	Total Mix Fluid Gal/sk	
1	PLUG AT 1730	POZ PREMIUM 40/60 - SBM (15075)	100.0	sacks	13.5	1.58	7.95		8.01	
	2 %	BENTONITE, BULK (100003682)								
	0.25 lbm	POLY-E-FLAKE (101216940)								
	8.007 Gal	FRESH WATER								
2	PLUG AT 650 ft	POZ PREMIUM 40/60 - SBM (15075)	40.0	sacks	13.5	1.58	7.95		8.01	
	2 %	BENTONITE, BULK (100003682)								
	0.25 lbm	POLY-E-FLAKE (101216940)								
	8.007 Gal	FRESH WATER								
3	PLUG AT 450	POZ PREMIUM 40/60 - SBM (15075)	40.0	sacks	13.5	1.58	7.95		8.01	
	2 %	BENTONITE, BULK (100003682)								
	0.25 lbm	POLY-E-FLAKE (101216940)								
	8.007 Gal	FRESH WATER								
4	PLUG FROM 0 ft TO 60 ft	POZ PREMIUM 40/60 - SBM (15075)	20.0	sacks	13.5	1.58	7.95		7.74	
	2 %	BENTONITE, BULK (100003682)								
	0.25 lbm	POLY-E-FLAKE (101216940)								
	7.738 Gal	FRESH WATER								
5	PLUG: RAT 30 sk & MOUSE HOLE 20 sk	POZ PREMIUM 40/60 - SBM (15075)	50.0	sacks	13.5	1.58	7.95		7.95	
	2 %	BENTONITE, BULK (100003682)								
	0.25 lbm	POLY-E-FLAKE (101216940)								
	7.948 Gal	FRESH WATER								
Calculated Values			Pressures			Volumes				
Displacement			Shut In: Instant			Lost Returns			Cement Slurry	
Top Of Cement			5 Min			Cement Returns		0	Actual Displacement	
Frac Gradient			15 Min			Spacers			Load and Breakdown	
									Pad	
									Treatment	
									Total Job	
Rates										
Circulating			Mixing		6	Displacement		6	Avg. Job	
Cement Left In Pipe		Amount	0 ft	Reason	Shoe Joint					
Frac Ring # 1 @		ID	Frac ring # 2 @		ID	Frac Ring # 3 @		ID	Frac Ring # 4 @	
The Information Stated Herein Is Correct					Customer Representative Signature					

Cementing Job Log

The Road to Excellence Starts with Safety

Sold To #: 348223		Ship To #: 2794388		Quote #:		Sales Order #: 7507304	
Customer: EOG RESOURCES INC EBUSINESS				Customer Rep: Knox, Mike			
Well Name: Black			Well #: 33 #1		API/UWI #:		
Field:		City (SAP): LIBERAL		County/Parish: Seward		State: Kansas	
Legal Description:							
Lat:				Long:			
Contractor: ABERCROMBIE			Rig/Platform Name/Num: 55				
Job Purpose: Plug to Abandon Service					Ticket Amount:		
Well Type: Development Well			Job Type: Plug to Abandon Service				
Sales Person: HESTON, MYRON			Srcv Supervisor: COOK, TOMMY			MBU ID Emp #: 279568	

Activity Description	Date/Time	Cnt #	Rate bbl/min	Volume bbl		Pressure psig		Comments
				Stage	Total	Tubing	Casing	
Call Out	07/16/2010 18:15							DISPATCH CALLED CEMENT CREW OUT FOR EOG BLACK #33 #1 PTA
Other	07/16/2010 18:30							LOAD EQUIPMENT FOR JOB
Depart from Service Center or Other Site	07/16/2010 19:00							CALLED DISPATCH TO LET THEM KNOW THE CREW LEFT THE YARD
Arrive at Location from Service Center	07/16/2010 21:45							CALLED DISPATCH TO TELL THEM I ARRIVED ON LOCATION; ASSESSED LOCATION FOR SAFETY AND FLUID REQUIREMENTS
Other	07/16/2010 21:50							GET PIPE TALLEY FROM CUSTOMER; MIKE KNOX, TP OF 8 5/8" = 1699'; 1 PLUG @ 1728'; 2 PLUG @ 663'; 3- PLUG @ 441'; 4 PLUG @ 60'; THEN CEMENT RAT AND MOUSE HOLE
Rig-Up Equipment	07/16/2010 22:30							TAKE CIRCULATING SWADGE TO FLOOR WITH TWO BALES AND CIRCULATED WELL WITH WATER
Pre-Job Safety Meeting	07/16/2010 22:45							DISCUSS JOB PROCEDURE AND HAZARDS WITH EVERYONE INVOLVED; RIG CREW SIGN SAFETY SHEET

Sold To #: 348223

Ship To #: 2794388

Quote #:

Sales Order #:

7507304

SUMMIT Version: 7.20.130

Saturday, July 17, 2010 03:03:00

Cementing Job Log

Activity Description	Date/Time	Cht #	Rate bbl/min	Volume bbl		Pressure psig		Comments
				Stage	Total	Tubing	Casing	
Start Job	07/16/2010 23:12							MAKE SURE RIG FLOOR IS CLEAR, CLOSE VALVE ON DRILL PIPE PIN
Test Lines	07/16/2010 23:13						3500.0	PRESSURE HELD; RELEASE BACK TO PUMP; OPENED VALVE ON DRILLPIPE PIN
Pump Spacer 1	07/16/2010 23:14		4	10			100.0	PUMPED FRESH WATER; FULL RETURNS
Pump Cement	07/16/2010 23:18		6	27			100.0	PUMPED 100 SKS @ 13.5#; FULL RETURNS; HOC = 1302'
Pump Displacement	07/16/2010 23:23		6				100.0	PUMPED FRESH WATER; FULL RETURNS
Shutdown	07/16/2010 23:28			15				PUMP ONE BBL SHY OF DISPLACEMENT; OPENED RELEASE LINE TO CHECK BALANCE; RIGGED DOWN OFF DRILL PIPE; RIG PULLED 34 JOINTS
Other	07/17/2010 00:10							RIGGED BACK UP TO DRILLPIPE
Pump Cement	07/17/2010 00:20		6	11			100.0	PUMPED 40 SKS @13.5#; FULL RETURNS; HOC = 486'
Pump Displacement	07/17/2010 00:25		6				100.0	PUMPED FRESH WATER ; FULL RETURNS
Shutdown	07/17/2010 00:27			5				PUMP ONE BBL SHY OF DISPLACEMENT; OPENED RELEASE LINE TO CHECK BALANCE; RIGGED DOWN OFF DRILL PIPE; RIG PULLED 7 JOINTS
Other	07/17/2010 00:35							RIGGED BACK UP TO DRILLPIPE
Pump Cement	07/17/2010 00:38		6	11			100.0	PUMPED 40 SKS @ 13.5#; FULL RETURNS; HOC = 264'

Sold To # : 348223

Ship To # : 2794388

Quote # :

Sales Order # :

7507304

SUMMIT Version: 7.20.130

Saturday, July 17, 2010 03:03:00

Cementing Job Log

Activity Description	Date/Time	Cht #	Rate bbl/min	Volume bbl		Pressure psig		Comments
				Stage	Total	Tubing	Casing	
Pump Displacement	07/17/2010 00:41		6				100.0	PUMPED FRESH WATER; FULL RETURNS
Shutdown	07/17/2010 00:43			3				PUMP ONE BBL SHY OF DISPLACEMENT; OPENED RELEASE LINE TO CHECK BALANCE; RIGGED DOWN OFF DRILL PIPE; RIG PULLED 12 JOINTS; RIG REMOVED BOPs OFF WORKSTRING
Other	07/17/2010 02:10							RIGGED BACK UP TO DILLPIPE
Pump Cement	07/17/2010 02:15		3	6			.0	PUMPED 20 SKS @ 13.5#; FULL RETURNS; HOC = 5'
Pump Displacement	07/17/2010 02:17		3				.0	PUMPED FRESH WATER; FULL RETURNS
Shutdown	07/17/2010 02:18			3				PUMP ONE BBL SHY OF DISPLACEMENT; OPENED RELEASE LINE TO CHECK BALANCE; RIGGED DOWN OFF DRILL PIPE
Pump Cement	07/17/2010 02:20		3	6			.0	PUMPED 20 SKS @ 13.5# INTO MOUSE HOLE; PUMPED 30 SKS @ 13.5# INTO RAT HOLE
Clean Lines	07/17/2010 02:25						.0	PUMPED FRESH WATER
End Job	07/17/2010 02:39							
Post-Job Safety Meeting (Pre Rig-Down)	07/17/2010 02:45							DISCUSSS HAZARDS WITH RIG-DOWN, USE FORKLIFT TO HELP WITH IRON
Rig-Down Equipment	07/17/2010 02:50							USE THE BUDDY SYSTEM TO CARRY IRON
Depart Location Safety Meeting	07/17/2010 03:15							DISCUSS ROUTE AND HAZARDS OF NIGHT DRIIVING WITH CREW

Sold To # : 348223

Ship To # :2794388

Quote # :

Sales Order # : 7507304

SUMMIT Version: 7.20.130

Saturday, July 17, 2010 03:03:00

HALLIBURTON

Cementing Job Log

Activity Description	Date/Time	Cht #	Rate bbl/min	Volume bbl		Pressure psig		Comments
				Stage	Total	Tubing	Casing	
Depart Location for Service Center or Other Site	07/17/2010 03:20							HALLIBURTON APPRECIATES THE WORK

Sold To # : 348223

Ship To # : 2794388

Quote # :

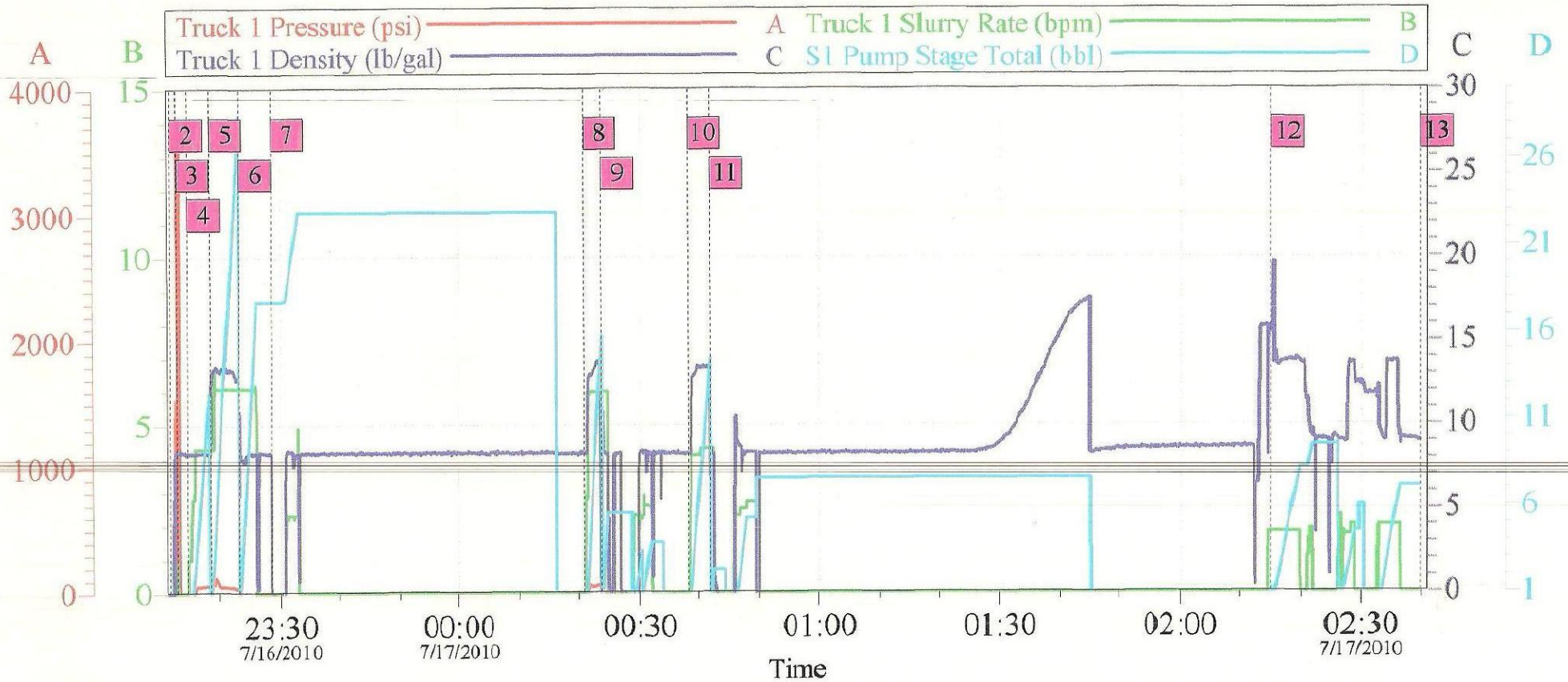
Sales Order # :

7507304

SUMMIT Version: 7.20.130

Saturday, July 17, 2010 03:03:00

7-17-10 EOG BLACK #33 #1 PTA



Global Event Log

Intersection	TIP	Intersection	TIP
1 Starting Job	7/16/2010 22:16:45 -83.00	2 Start Job	7/16/2010 23:12:00 -85.00
3 Test Lines	7/16/2010 23:13:02 3628	4 Pump Spacer 1	7/16/2010 23:14:51 -77.05
5 Pump Cement	7/16/2010 23:18:28 69.71	6 Pump Displacement	7/16/2010 23:23:21 -13.00
7 Shut Down	7/16/2010 23:28:42 -84.00	8 Pump Cement	7/17/2010 00:20:44 -70.00
9 Pump Displacement	7/17/2010 00:23:42 -31.96	10 Pump Cement	7/17/2010 00:38:00 -84.00
11 Pump Displacement	7/17/2010 00:41:48 -28.68	12 Pump Cement	7/17/2010 02:15:07 -77.95
13 Ending Job	7/17/2010 02:39:50 -88.00		