

Three Corners Surveying and Mapping Oil and Gas Well Staking

PO Box 463, Wray, CO 80758, (970) 332-4133

Rosewood Resources, Inc.

Operator

Cheyenne County, KS

County

Directions

From the intersection of Highway 36 and Hwy 27:
-West on Hwy 36 1.1 miles
-North on County Road 12 - running into County Road 11 1.2 miles
-East across pasture 370' +/- feet to proposed location

15 July 2010

Date of field work

E. Johnson

Measured by

E. Johnson

Drawn by

N. Chesley

Auhtorized by

NEITZEL (L.) 11-30

Well name

30 3S 40W

Section Township Range

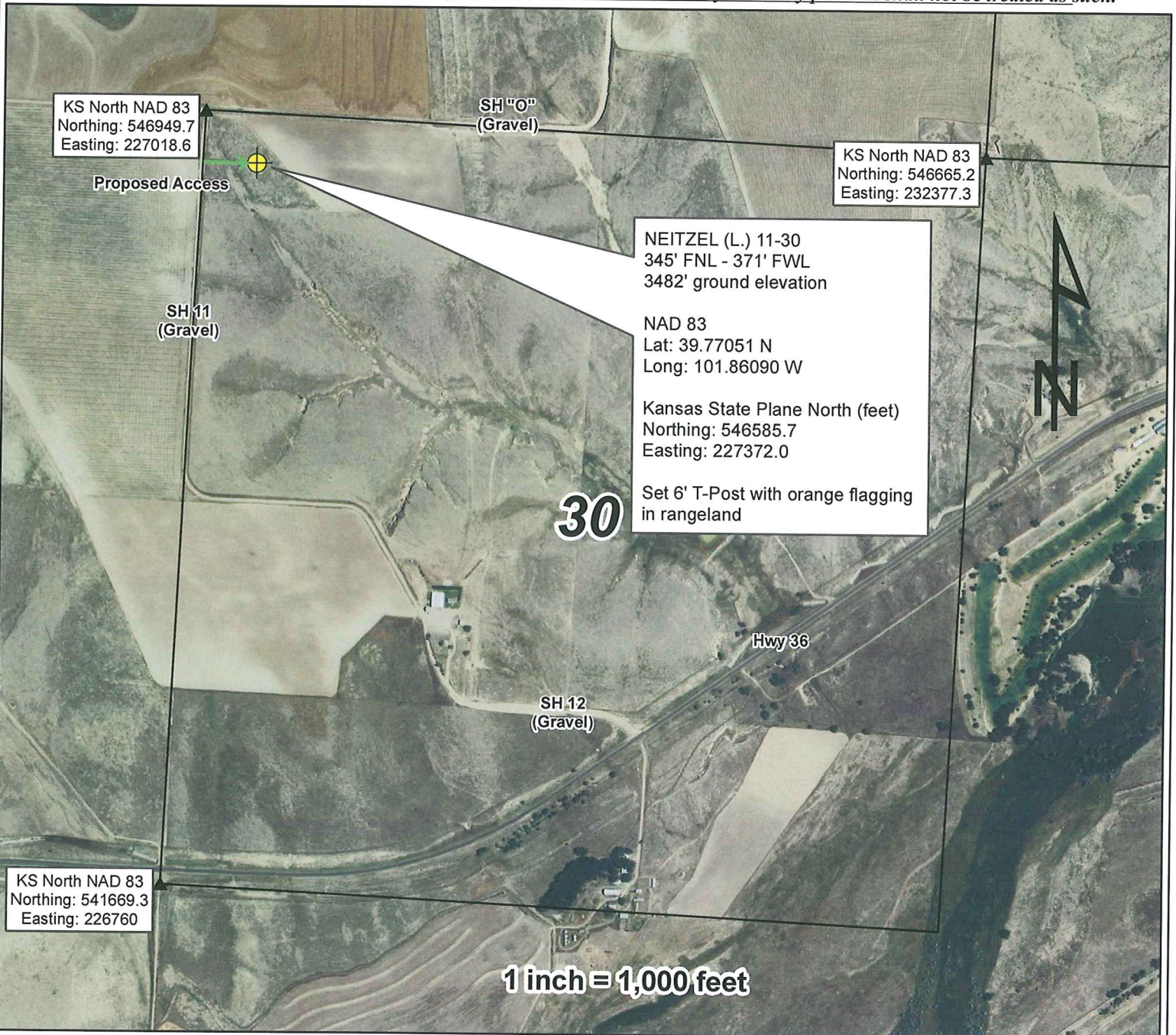
345' FNL - 371' FWL

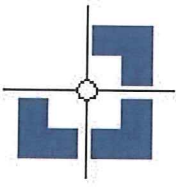
Spot location

3482'

Ground elevation

This drawing is for well construction purposes only. It is not a monumented survey or survey plat and shall not be treated as such.





Three Corners Surveying and Mapping Oil and Gas Well Staking

PO Box 463, Wray, CO 80758, (970) 332-4133

Rosewood Resources, Inc.

Operator

Cheyenne County, KS

County

NEITZEL (L.) 11-30

Well name

30 3S 40W

Section Township Range

345' FNL - 371' FWL

Spot location

3482'

Ground elevation

15 July 2010

Date of field work

E. Johnson

Measured by

E. Johnson

Drawn by

N. Chesley

Auhtorized by

Directions

From the intersection of Highway 36 and Hwy 27:

-West on Hwy 36 1.1 miles

-North on County Road 12 - running into County Road 11 1.2 miles

-East across pasture 370' +/- feet to proposed location

This drawing is for well construction purposes only. It is not a monumented survey or survey plat and shall not be treated as such.

