

Three Corners Surveying and Mapping Oil and Gas Well Staking

PO Box 463, Wray, CO 80758, (970) 332-4133

Rosewood Resources, Inc.

Operator

Cheyenne County, KS

County

RAILE 14-08

Well name

8 3S 40W

Section Township Range

873' FSL - 385' FWL

Spot location

3392'

Ground elevation

Directions

From the intersection of Highway 36 and Hwy 27:
-North on Hwy 27 2.6 miles to gate on east side of highway
-Southeasterly across pasture 1000' +/- to proposed location

15 July 2010

Date of field work

E. Johnson

Measured by

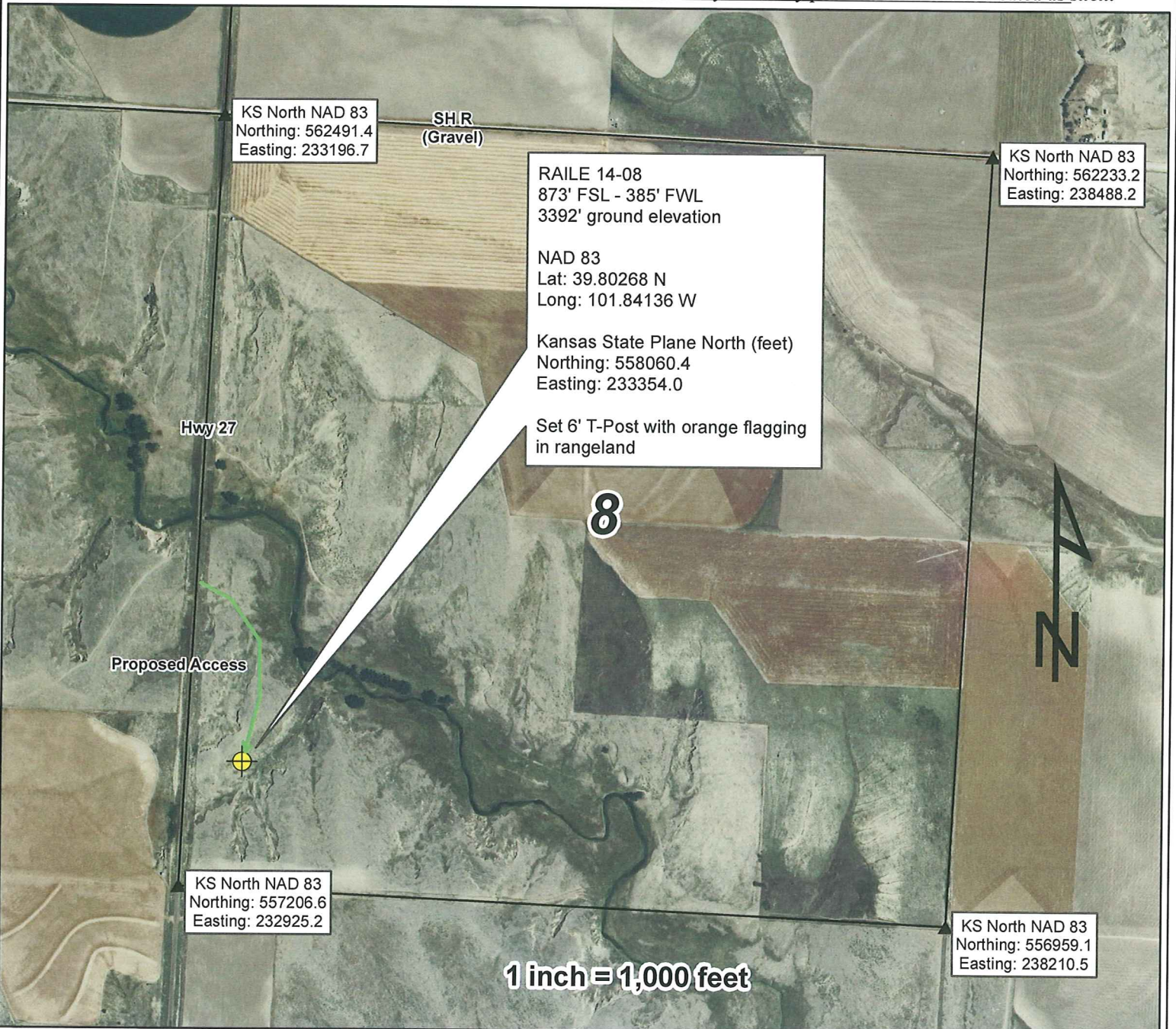
E. Johnson

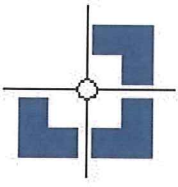
Drawn by

N. Chesley

Auhtorized by

This drawing is for well construction purposes only. It is not a monumented survey or survey plat and shall not be treated as such.





Three Corners Surveying and Mapping Oil and Gas Well Staking

PO Box 463, Wray, CO 80758, (970) 332-4133

Rosewood Resources, Inc.

Operator

Cheyenne County, KS

County

RAILE 14-08

Well name

8 3S 40W

Section Township Range

873' FSL - 385' FWL

Spot location

3392'

Ground elevation

Directions

From the intersection of Highway 36 and Hwy 27:
-North on Hwy 27 2.6 miles to gate on east side of highway
-Southeasterly across pasture 1000' +/- to proposed location

15 July 2010

Date of field work

E. Johnson

Measured by

E. Johnson

Drawn by

N. Chesley

Auhtorized by

This drawing is for well construction purposes only. It is not a monumented survey or survey plat and shall not be treated as such.

