

Three Corners Surveying and Mapping Oil and Gas Well Staking

PO Box 463, Wray, CO 80758, (970) 332-4133

Rosewood Resources, Inc.

Operator

Cheyenne County, KS

County

MAIFELD 42-32

Well name

32 4S 40W

Section Township Range

2295' FNL - 335' FEL

Spot location

3608'

Ground elevation

Directions

From the intersection of Highway 36 and River Road:

-Southwesterly on River Road 0.6 miles to County Road 13

-South on County Road 13 6.6 miles to gate on West

-North and West across pasture 0.25 miles to proposed location

4 August 2010

Date of field work

E. Johnson

Measured by

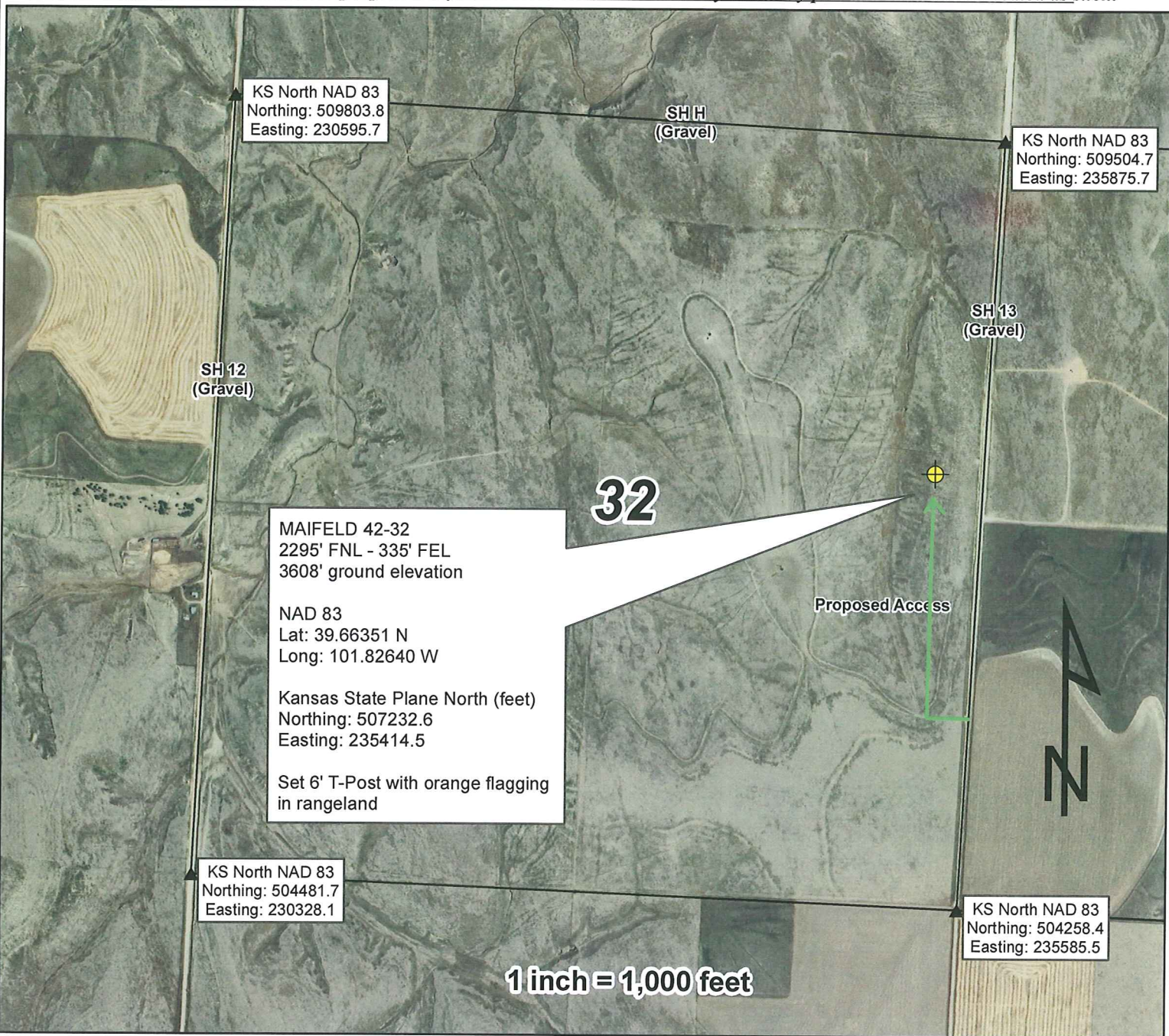
E. Johnson

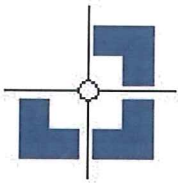
Drawn by

N. Chesley

Auhtorized by

This drawing is for well construction purposes only. It is not a monumented survey or survey plat and shall not be treated as such.





Three Corners Surveying and Mapping Oil and Gas Well Staking

PO Box 463, Wray, CO 80758, (970) 332-4133

Rosewood Resources, Inc.

Operator

Cheyenne County, KS

County

MAIFELD 42-32

Well name

32 4S 40W

Section Township Range

2295' FNL - 335' FEL

Spot location

3608'

Ground elevation

Directions

From the intersection of Highway 36 and River Road:

-Southwesterly on River Road 0.6 miles to County Road 13

-South on County Road 13 6.6 miles to gate on West

-North and West across pasture 0.25 miles to proposed location

4 August 2010

Date of field work

E. Johnson

Measured by

E. Johnson

Drawn by

N. Chesley

Auhtorized by

This drawing is for well construction purposes only. It is not a monumented survey or survey plat and shall not be treated as such.

