

# Three Corners Surveying and Mapping Oil and Gas Well Staking

PO Box 463, Wray, CO 80758, (970) 332-4133

**Rosewood Resources, Inc.**

Operator

**Cheyenne County, KS**

County

**MAIFELD 43-32**

Well name

**32 4S 40W**

Section Township Range

**1962' FSL - 493' FEL**

Spot location

**3610'**

Ground elevation

### Directions

From the intersection of Highway 36 and River Road:

-Southwesterly on River Road 0.6 miles to County Road 13

-South on County Road 13 6.6 miles to gate on West

-North and West across pasture 800' +/- to proposed location

**21 July 2010**

Date of field work

**E. Johnson**

Measured by

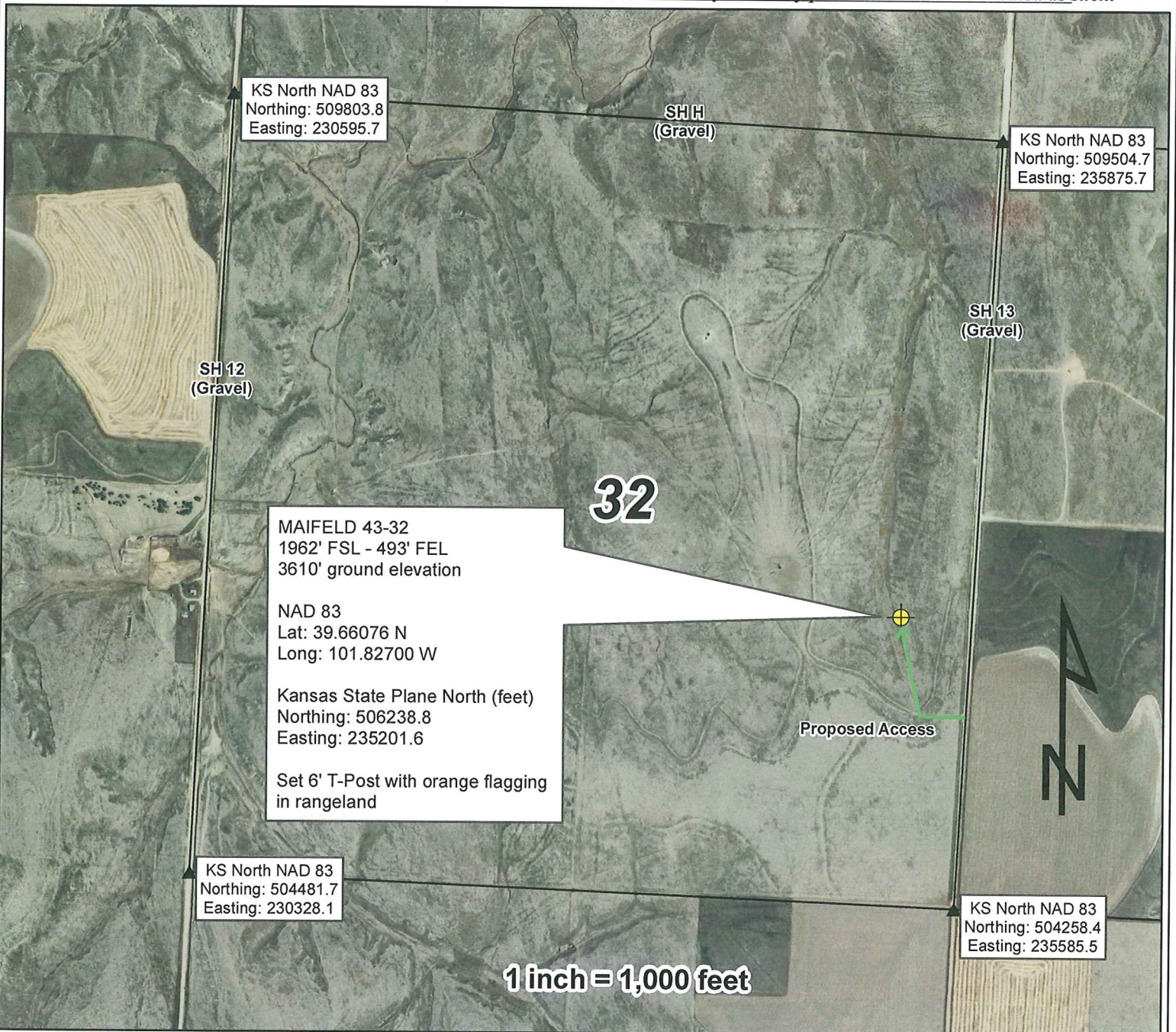
**E. Johnson**

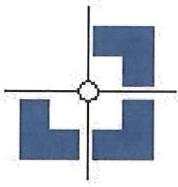
Drawn by

**N. Chesley**

Auhtorized by

*This drawing is for well construction purposes only. It is not a monumented survey or survey plat and shall not be treated as such.*





# Three Corners Surveying and Mapping Oil and Gas Well Staking

PO Box 463, Wray, CO 80758, (970) 332-4133

Rosewood Resources, Inc.

Operator

Cheyenne County, KS

County

MAIFELD 43-32

Well name

32 4S 40W

Section Township Range

1962' FSL - 493' FEL

Spot location

3610'

Ground elevation

### Directions

From the intersection of Highway 36 and River Road:

-Southwesterly on River Road 0.6 miles to County Road 13

-South on County Road 13 6.6 miles to gate on West

-North and West across pasture 800' +/- to proposed location

21 July 2010

Date of field work

E. Johnson

Measured by

E. Johnson

Drawn by

N. Chesley

Auhtorized by

*This drawing is for well construction purposes only. It is not a monumented survey or survey plat and shall not be treated as such.*

