



ROBINSON SERVICES

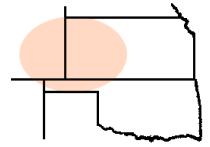
Oil Field & Construction Staking

P.O. Box 2324

Garden City, Kansas 67846

Office/Fax: (620) 276-6159

Cell: (620) 272-1499



p113009-h
PLAT NO.

8489
INVOICE NO.

Rosewood Resources, Inc.

OPERATOR

Cheyenne County, KS

COUNTY

24 3s 41w
Sec. Twp. Rng.

Zweygardt #43-24 (2nd restake)

LEASE NAME

1993' FSL - 469' FEL

LOCATION SPOT

SCALE: **1" = 1000'**

DATE: **Nov. 24th, 2009**

MEASURED BY: **James K.**

DRAWN BY: **Gabe Q**

AUTHORIZED BY: **Dean J. & Nate**

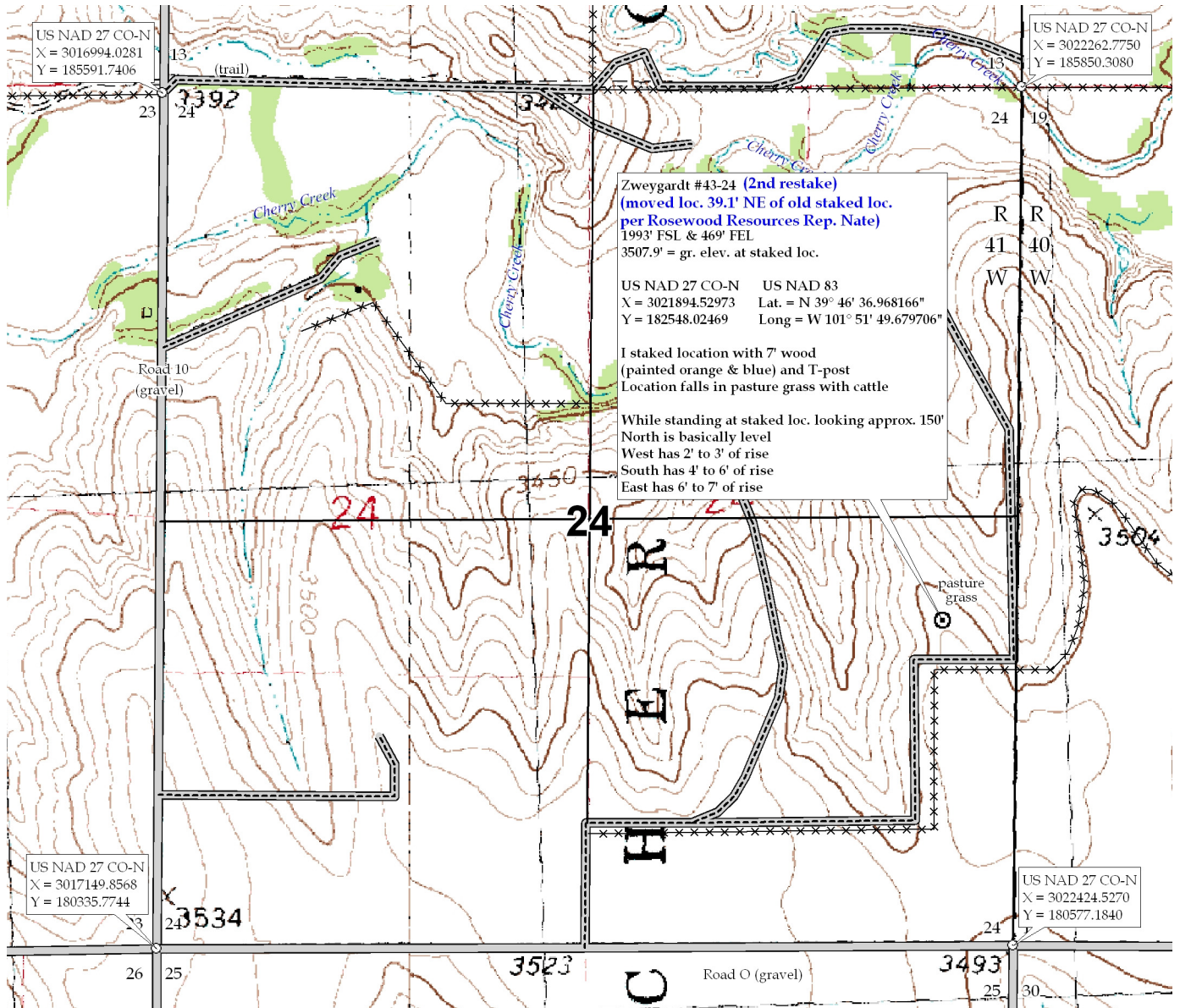
GR. ELEVATION: **3507.9'**



Directions: From approx. 1.5 miles West of St. Francis, Ks at the intersection of Hwy 27 North & Hwy 36 - Now go 2.7 miles West on Hwy 36 - Now go 1 mile North on Road 10 to the SE corner of section 24-3s-41w - Now go 0.5 mile West on Road O - Now go 0.2 mile North on trail - Now go 0.4 mile East on trail - Now go 0.2 mile North on trail - Now go approx. 270' NE through pasture grass into staked location.

Final ingress must be verified with land owner or Rosewood Resources, Inc.

This drawing does not constitute a monumented survey or a land survey plat
This drawing is for construction purposed only



US NAD 27 CO-N
X = 3016994.0281
Y = 185591.7406

US NAD 27 CO-N
X = 302262.7750
Y = 185850.3080

Zweygardt #43-24 (2nd restake)
(moved loc. 39.1' NE of old staked loc. per Rosewood Resources Rep. Nate)
1993' FSL & 469' FEL
3507.9' = gr. elev. at staked loc.

US NAD 27 CO-N US NAD 83
X = 3021894.52973 Lat. = N 39° 46' 36.968166"
Y = 182548.02469 Long = W 101° 51' 49.679706"

I staked location with 7' wood (painted orange & blue) and T-post
Location falls in pasture grass with cattle

While standing at staked loc. looking approx. 150' North is basically level
West has 2' to 3' of rise
South has 4' to 6' of rise
East has 6' to 7' of rise

US NAD 27 CO-N
X = 3017149.8568
Y = 180335.7744

US NAD 27 CO-N
X = 3022424.5270
Y = 180577.1840