



ROBINSON SERVICES

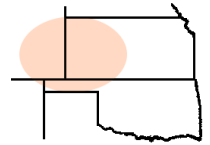
Oil Field & Construction Staking

P.O. Box 2324

Garden City, Kansas 67846

Office/Fax: (620) 276-6159

Cell: (620) 272-1499



y113009-e
PLAT NO.

8488
INVOICE NO.

Rosewood Resources, Inc.

OPERATOR

Cheyenne County, KS

COUNTY

Zweygardt #44-24 (2nd restake)

LEASE NAME

872' FSL - 756 FEL

LOCATION SPOT

24 3s 41w
Sec. Twp. Rng.

SCALE: **1" = 1000'**

DATE: **Nov. 25th, 2008**

MEASURED BY: **James K.**

DRAWN BY: **Gabe Q**

AUTHORIZED BY: **Dean J. & Nate**

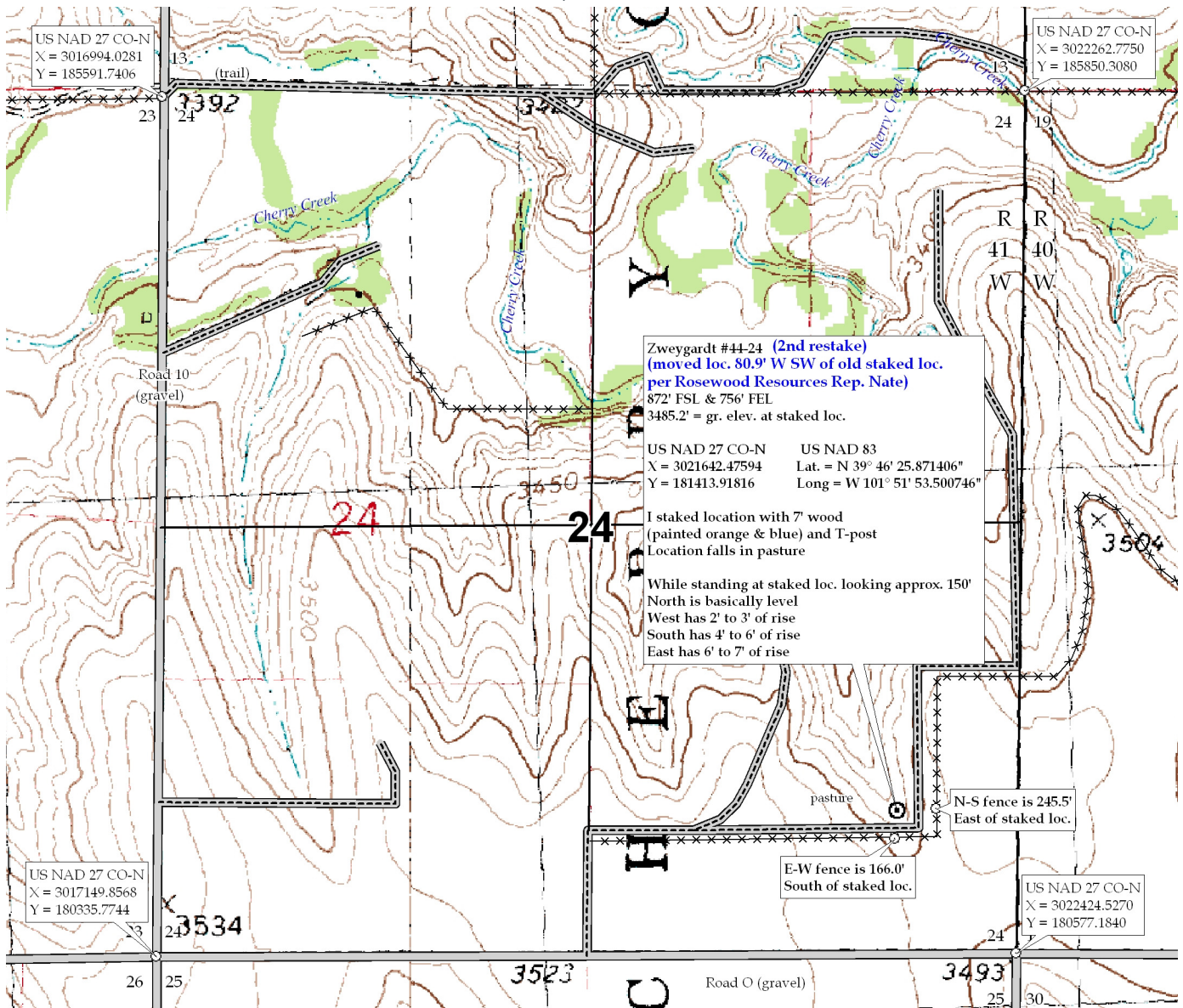
GR. ELEVATION: **3485.2'**



Directions: From approx. 1.5 miles West of St. Francis, Ks at the intersection of Hwy 27 North & Hwy 36 - Now go 2.7 miles West on Hwy 36 - Now go 1 mile North on Road 10 to the SW corner of section 24-3s-41w - Now go 0.5 mile East on Road O - Now go 0.2 mile North on trail - Now go 0.4 mile West on trail - Now go approx. 90' North through pasture into staked location.

Final ingress must be verified with land owner or Rosewood Resources, Inc.

This drawing does not constitute a monumented survey or a land survey plat
This drawing is for construction purposed only



Zweygardt #44-24 (2nd restake)
(moved loc. 80.9' W SW of old staked loc.
per Rosewood Resources Rep. Nate)
872' FSL & 756' FEL
3485.2' = gr. elev. at staked loc.

US NAD 27 CO-N X = 3021642.47594 Y = 181413.91816
US NAD 83 Lat. = N 39° 46' 25.871406" Long = W 101° 51' 53.500746"

I staked location with 7' wood (painted orange & blue) and T-post
Location falls in pasture

While standing at staked loc. looking approx. 150'
North is basically level
West has 2' to 3' of rise
South has 4' to 6' of rise
East has 6' to 7' of rise

N-S fence is 245.5'
East of staked loc.

E-W fence is 166.0'
South of staked loc.

US NAD 27 CO-N X = 3022424.5270 Y = 180577.1840

US NAD 27 CO-N X = 3017149.8568 Y = 180335.7744

US NAD 27 CO-N X = 3016994.0281 Y = 185591.7406

US NAD 27 CO-N X = 3022262.7750 Y = 185850.3080