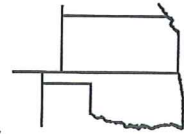


# ROBINSON SERVICES

Oil Field & Construction Staking

P.O. Box 2324  
Garden City, Kansas 67846  
Office/Fax: (620) 276-6159  
Cell: (620) 272-1499



**z072608-n**  
PLAT NO.

**7719**  
INVOICE NO.

**Rosewood Resources, Inc.**

OPERATOR

**Cheyenne County, KS**  
COUNTY

**Zweygardt #13-19**

LEASE NAME

**2302' FSL - 931' FWL**

LOCATION SPOT

**19 3s 40w**  
Sec. Twp. Rng.

SCALE: **1" = 1000'**  
DATE: **July 26<sup>th</sup>, 2008**  
MEASURED BY: **Tom W.**  
DRAWN BY: **Gabe Q.**  
AUTHORIZED BY: **Steve V.**

GR. ELEVATION: **3497.0**

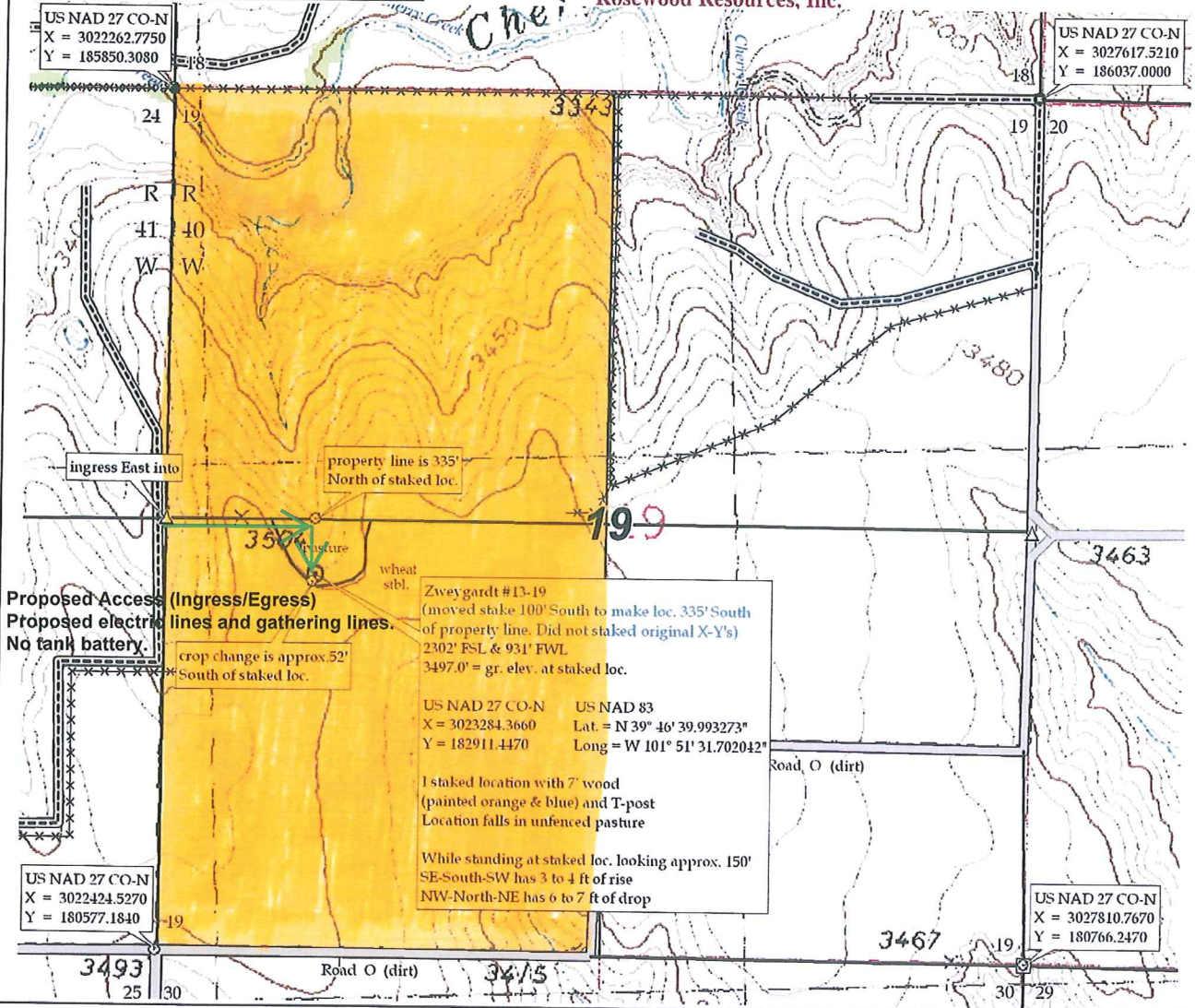


**Directions:** From approx. 1.5 miles West of St. Francis, Ks at the intersection of Hwy 27 North & Hwy 36 - Now go 2.7 miles West on Hwy 36 - Now go 1 mile North on Road 10 to the SW corner of section 24-3s-41w - Now go 0.5 mile West on Road O - Now go 0.2 mile North on trail - Now go 0.4 mile East on trail - Now go 0.2 mile North on trail - Now go 0.1 mile East on trail - Now go 0.2 mile North on trail - Now go 931' East through pasture - Now go 335' South through pasture into staked location.

**Final ingress must be verified with land owner or Rosewood Resources, Inc.**

*This drawing does not constitute a monumented survey or a land survey plat*

*This drawing is for construction purposes only*



US NAD 27 CO-N  
X = 3022262.7750  
Y = 185850.3080

US NAD 27 CO-N  
X = 3027617.5210  
Y = 186037.0000

US NAD 27 CO-N  
X = 3022424.5270  
Y = 180577.1840

US NAD 27 CO-N  
X = 3027810.7670  
Y = 180766.2470

Zweygardt #13-19  
(moved stake 100' South to make loc. 335' South of property line. Did not stake original X-Y's)  
2302' FSL & 931' FWL  
3497.0' = gr. elev. at staked loc.

US NAD 27 CO-N X = 3023284.3660 Y = 182911.4470  
US NAD 83 Lat. = N 39° 46' 39.993273" Long = W 101° 51' 31.702042"

I staked location with 7' wood (painted orange & blue) and T-post  
Location falls in unfenced pasture

While standing at staked loc. looking approx. 150' SE-South-SW has 3 to 4 ft of rise  
NW-North-NE has 6 to 7 ft of drop

**Proposed Access (Ingress/Egress)**  
**Proposed electric lines and gathering lines.**  
**No tank battery.**

crop change is approx 52' South of staked loc.

property line is 335' North of staked loc.

Road O (dirt)

Road O (dirt)