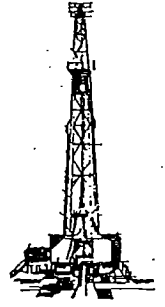




ROBERT E. MOSER, R.L.S.

Oil Field Surveying

335 N. Mission Road • Wichita, Kansas 67206
(316) 683-2853



812103

INVOICE NO.

VESS OIL CORPORATION

32

Blair 'A'

OPERATOR

NO.

FARM

Butler (KS) 13 26s 04e

1320' FNL - 2050' FWL

COUNTY

S T R

LOCATION

ELEVATION: 1372.2' gr. @ stk.

VESS OIL CORPORATION
1700 Waterfront Pkwy. - #500
Wichita, KS 67206

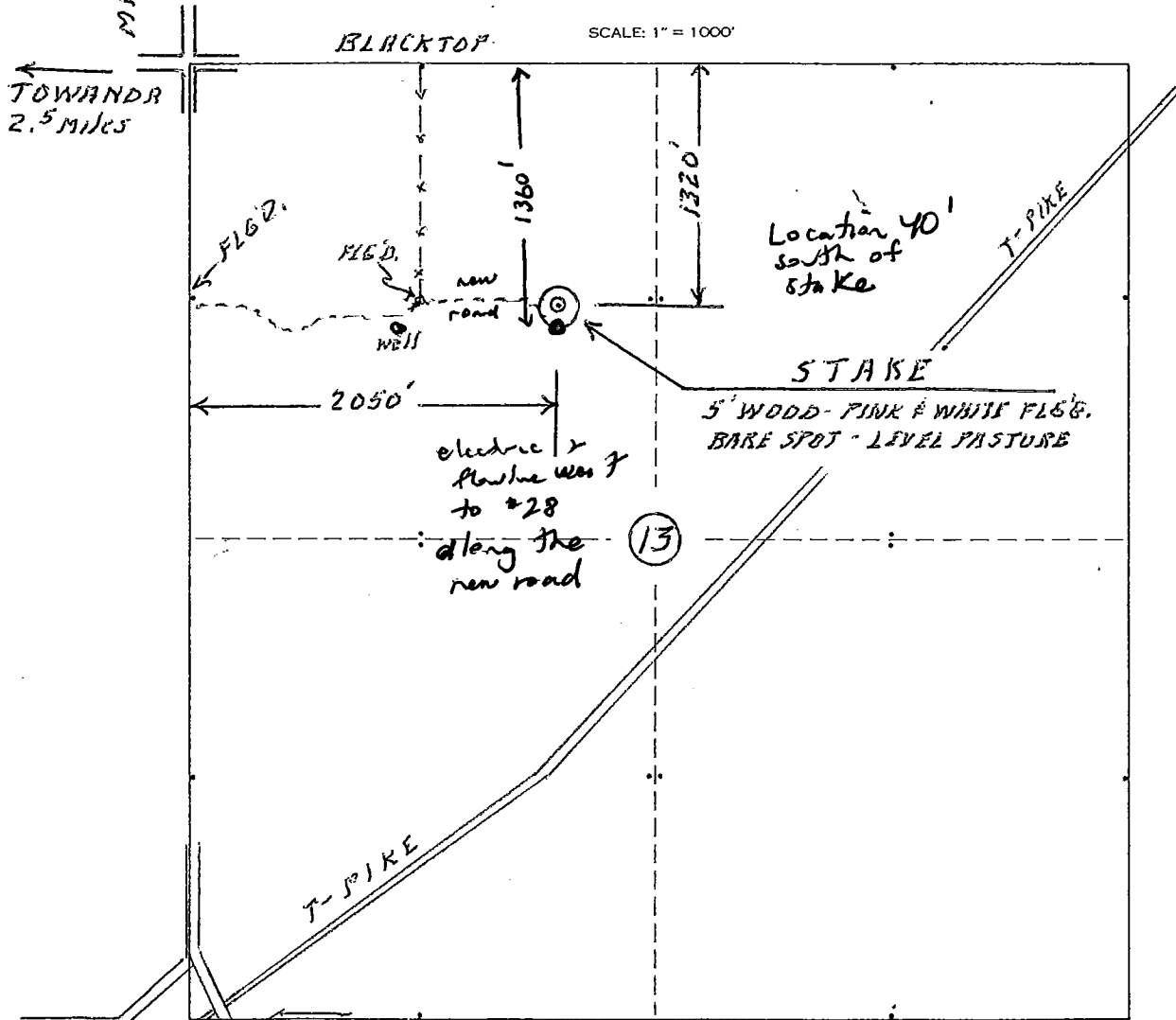
Mr. C. Coats (ph/ltr 8/11/10)

AUTHORIZED BY:

MIDIAN 1 MI. ↑

↑
N

SCALE: 1" = 1000'



Note: Mr. S. Darwin present & assisted. Thanks.

Date: 12 August 2010

R. E. Moser

Surveyor: R. E. Moser, R.L.S. #329