

PENCO ENGINEERING, P.A.  
P.O. BOX 392  
PLAINVILLE, KS 67663  
(785) 434-4611

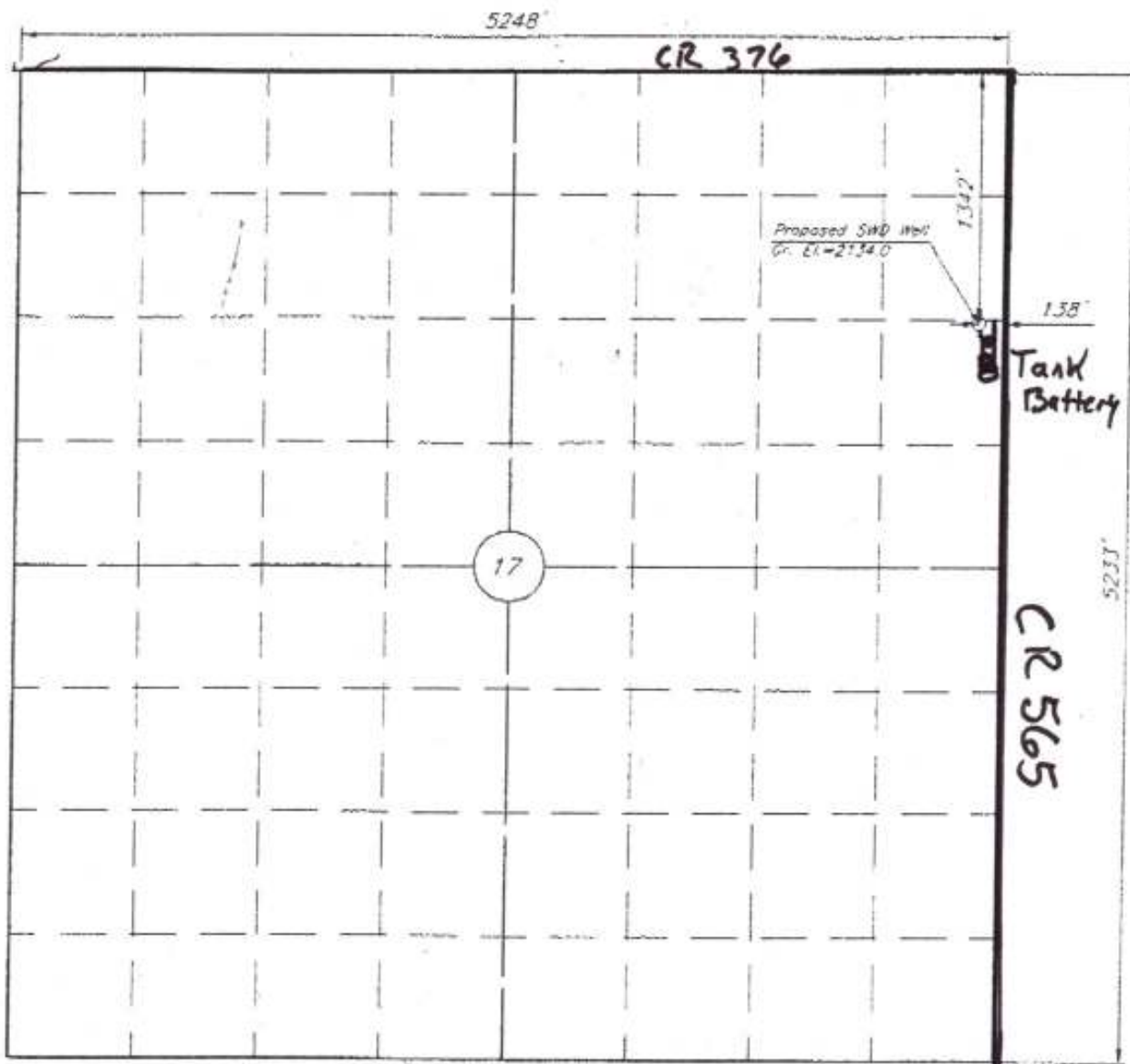
BILL TO:

NE 1/4, SE 1/4, NE 1/4 Section 17, T7S, R21W  
LOCATION

August 23, 2010  
DATE

Holsman SWD #1  
LEASE LOCATION NO.

Graham  
COUNTY



Elevations based on a Quad Map Elevation for the Northeast Corner of Section 17, T7S, R21W.  
Elev. 2117.0

This Survey does not constitute a boundary survey. Section corners were not found or set.  
Physical evidence was used to approximate the location of the section corners.

Scale: 1" = 100