

# ADVANTAGE ELEVATIONS

OIL FIELD SURVEYORS

BOX 8604 - PRATT, KS 67124  
(620) 672-6491

728102  
INVOICE NO.

LOTUS OPERATING COMPANY LLC      2      Rose  
OPERATOR      NO.      FARM

Barber      25      34s      12w      495' FSL & 495' FEL  
COUNTY      S      T      R      LOCATION

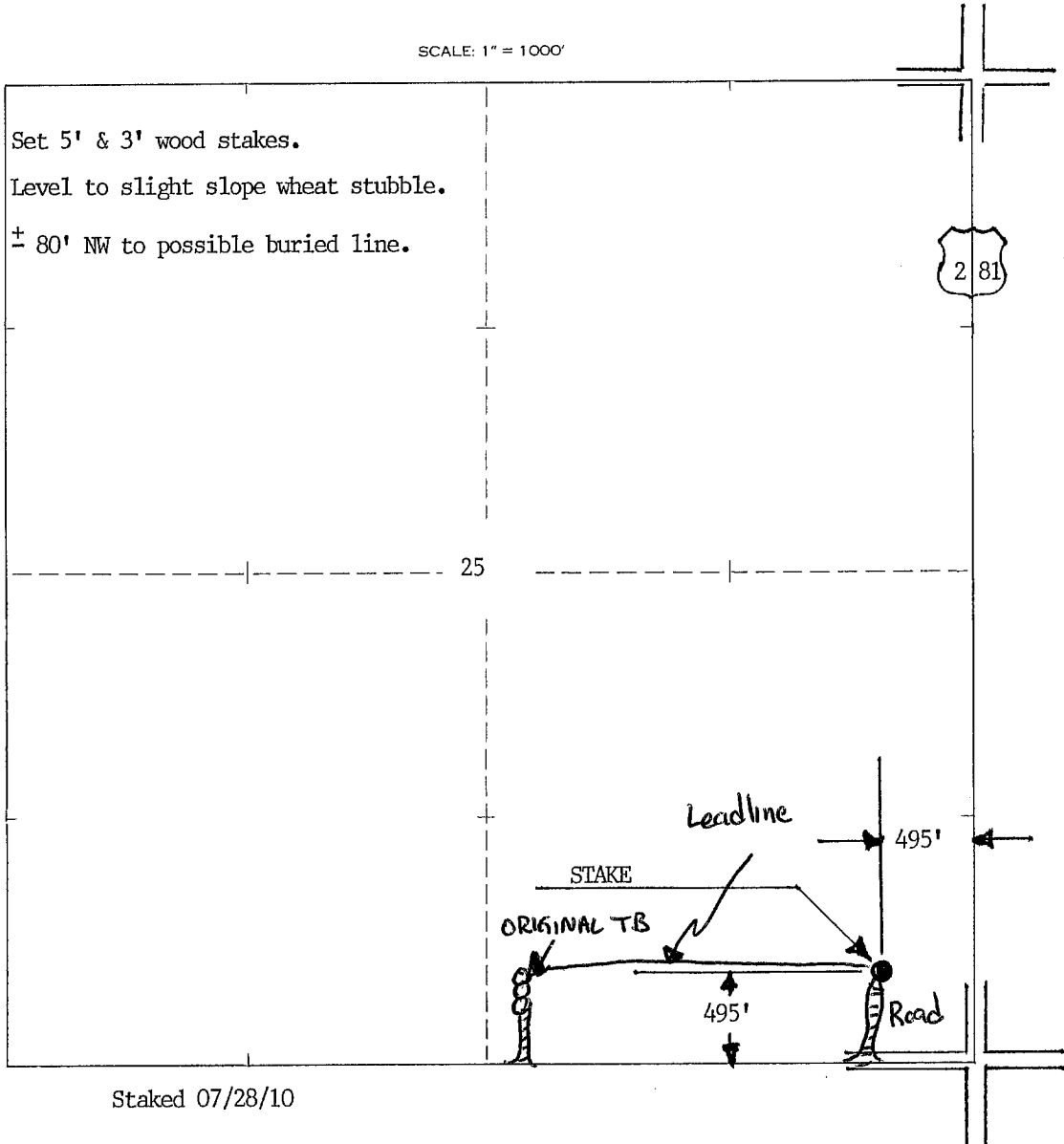
ELEVATION: 1398' gr

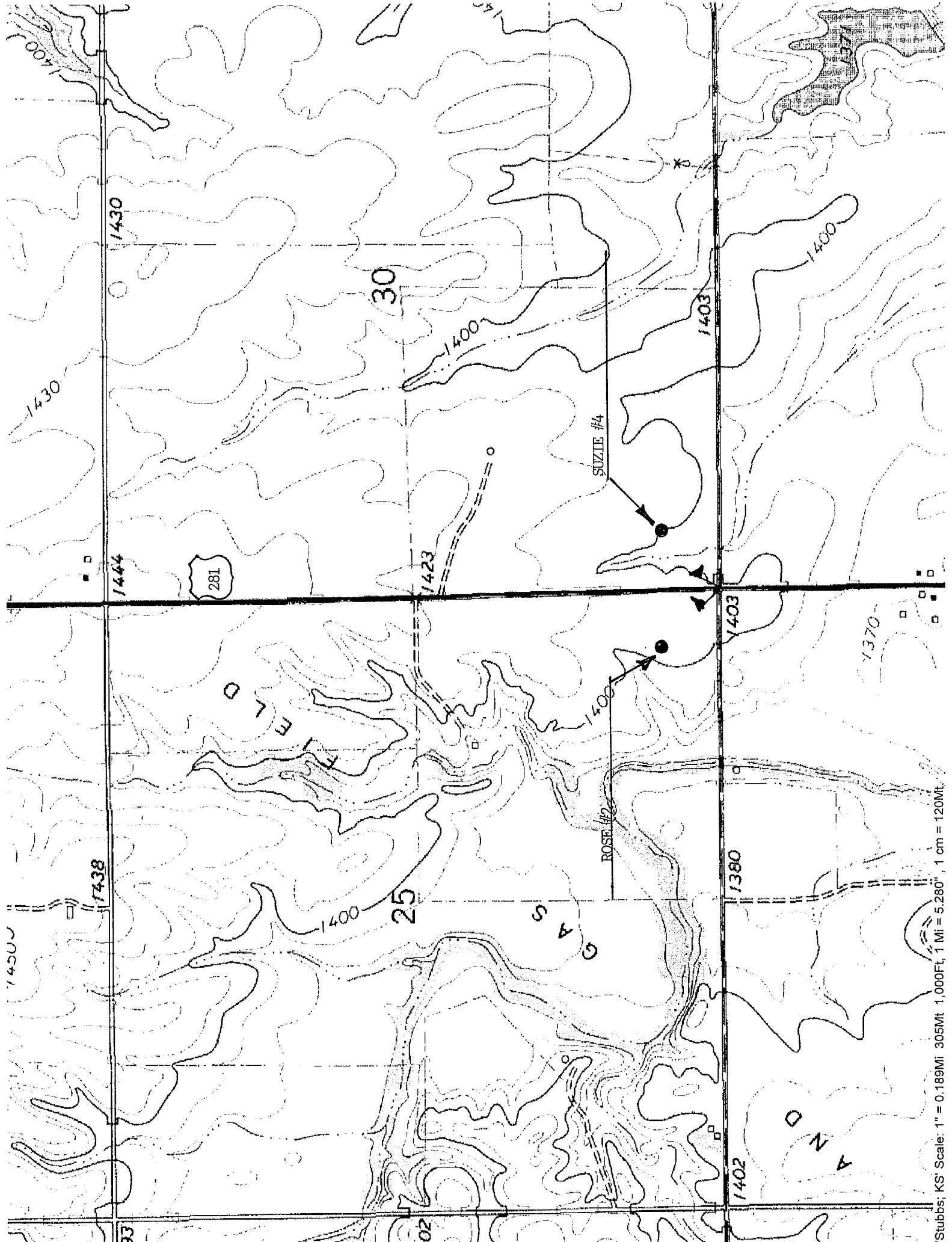


LOTUS OPERATING COMPANY LLC  
100 S Main, Ste 420  
Wichita KS 67202

AUTHORIZED BY: Tim Hellman

SCALE: 1" = 1000'





Stubbs, KS' Scale: 1" = 0.189Mi. 305Mt 1,000Ft, 1 Mi = 5,280", 1 cm = 120Mt.