

ADVANTAGE ELEVATIONS

OIL FIELD SURVEYORS

BOX 8604 - PRATT, KS 67124
(620) 672-6491

728101
INVOICE NO.

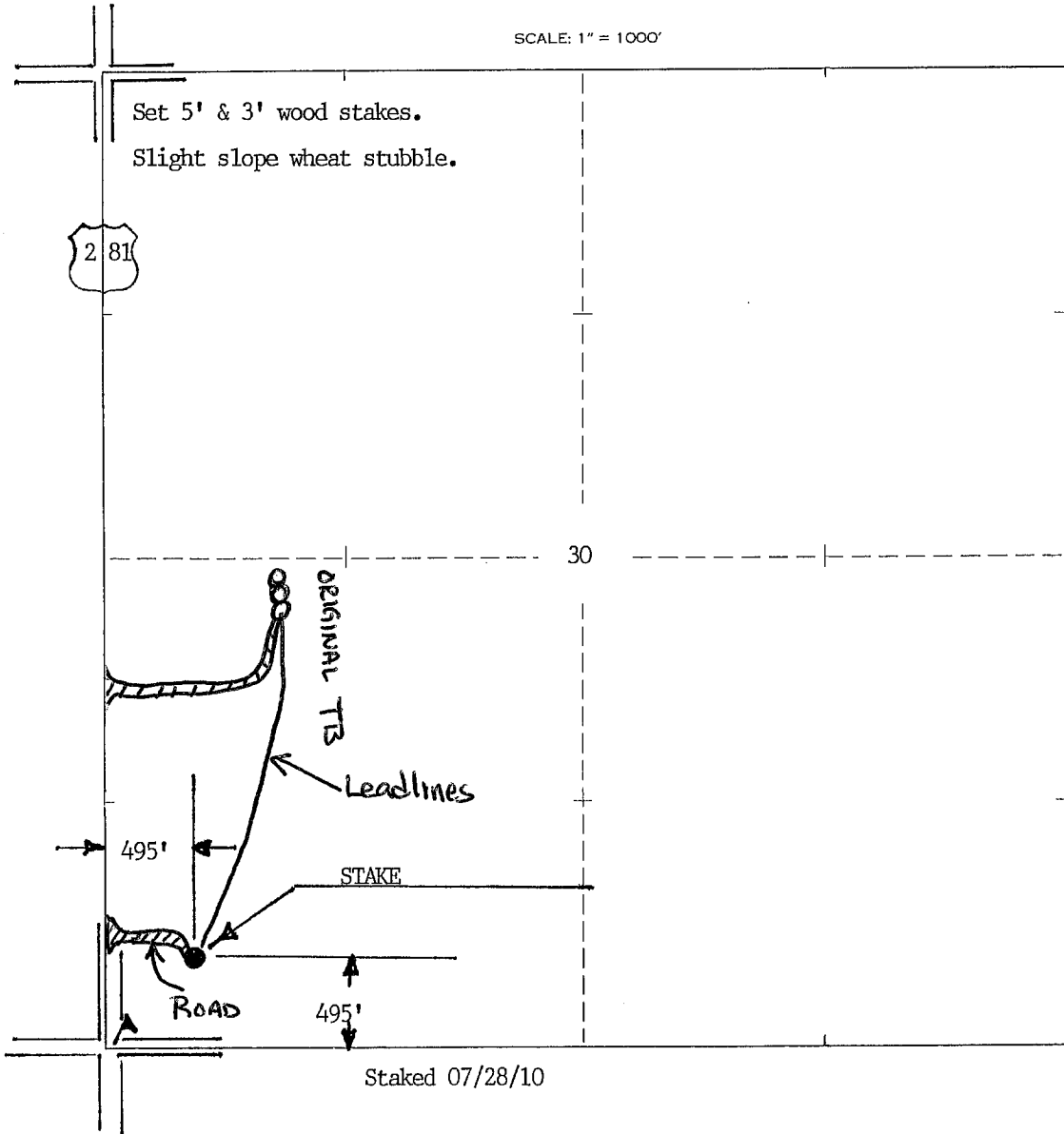
LOTUS OPERATING COMPANY LLC 4 Suzie
OPERATOR NO. FARM

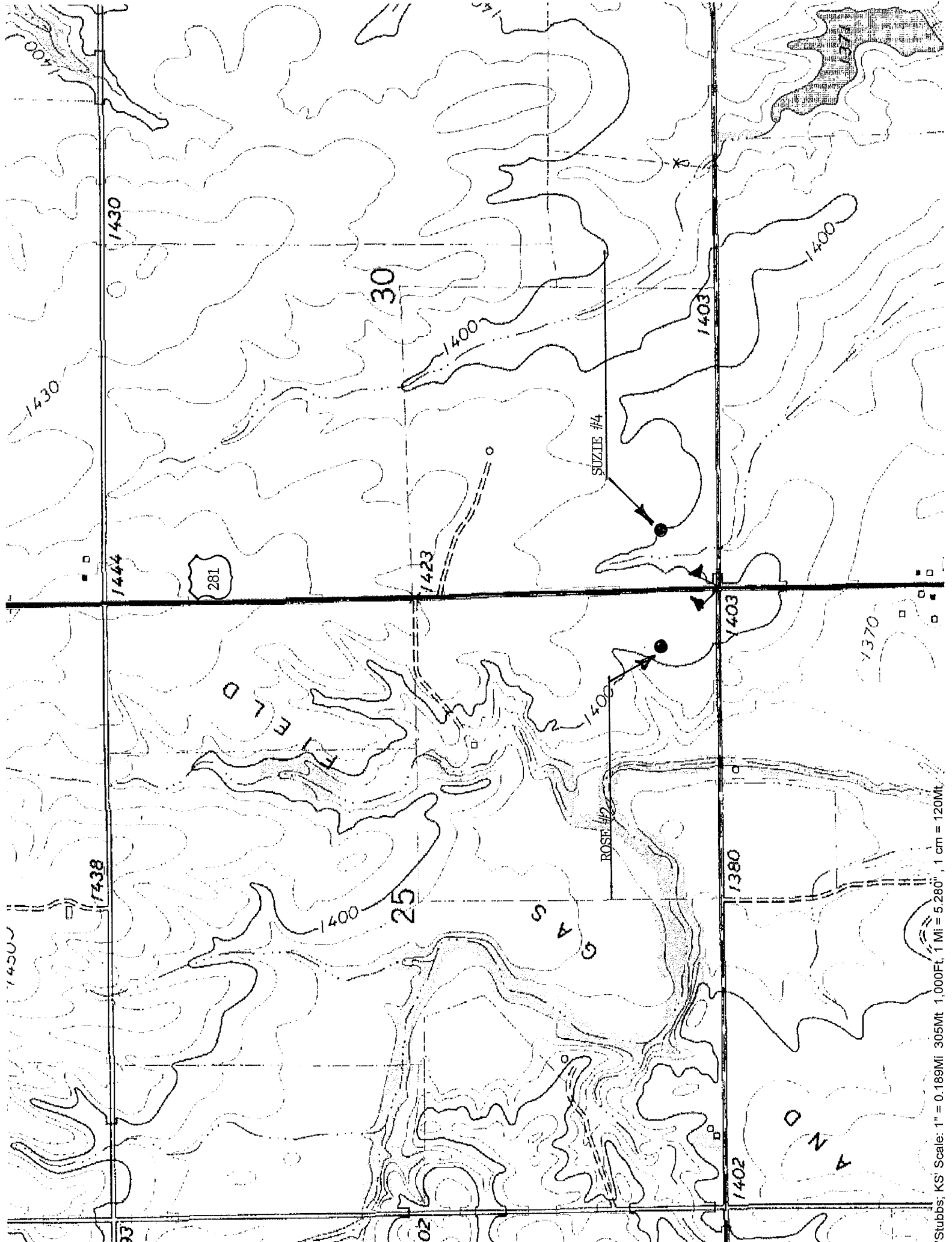
Barber 30 34s 11w 495' FSL & 495' FWL
COUNTY S T R LOCATION

ELEVATION: 1392' gr

↑
N
LOTUS OPERATING COMPANY LLC
100 S Main, Ste. 420
Wichita KS 67202

AUTHORIZED BY: Tim Helman





Stubbbs, KS Scale: 1" = 0.189Mi 305Mt 1,000Ft, 1 Mi = 5,280", 1 cm = 120Mt.