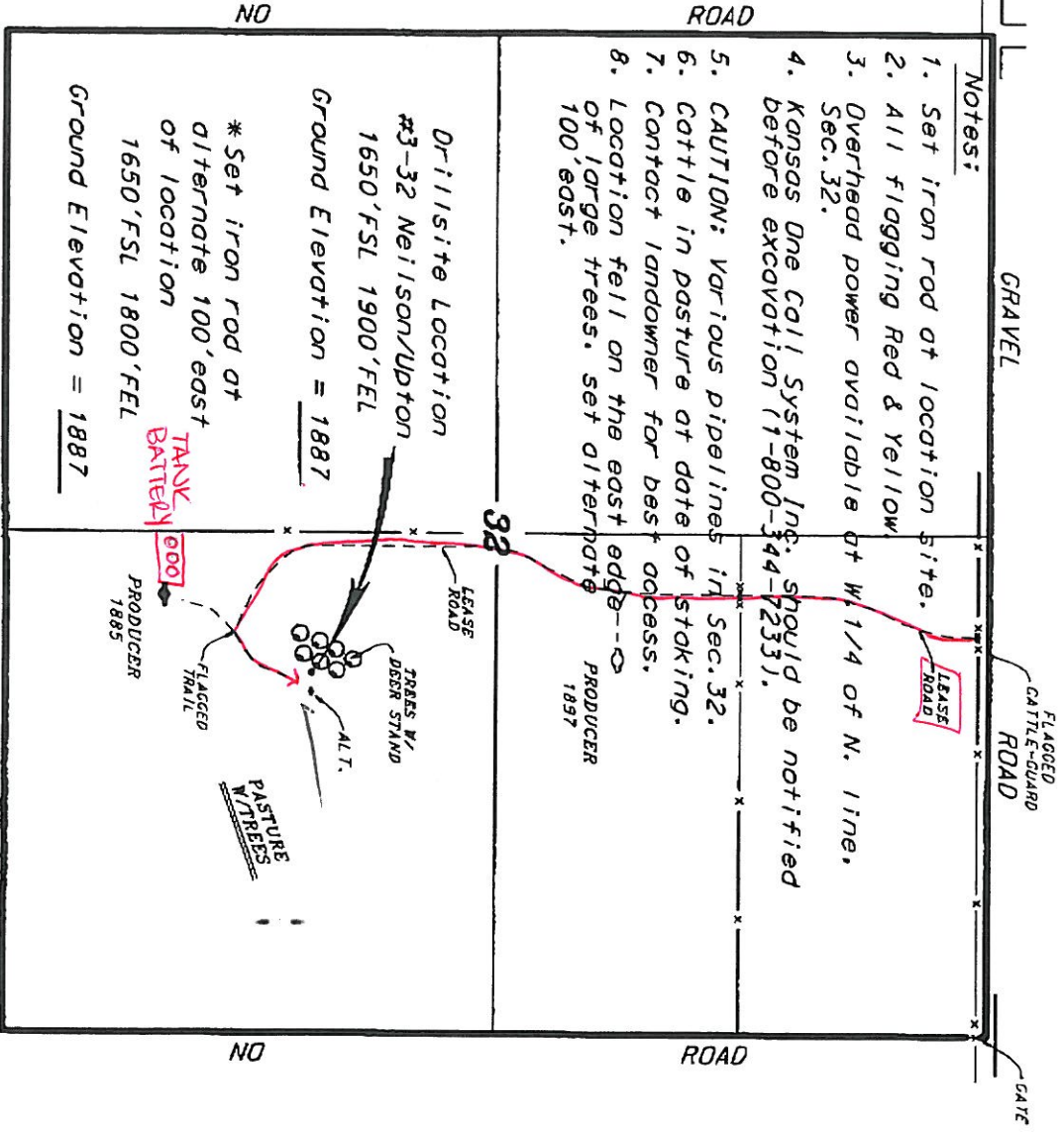
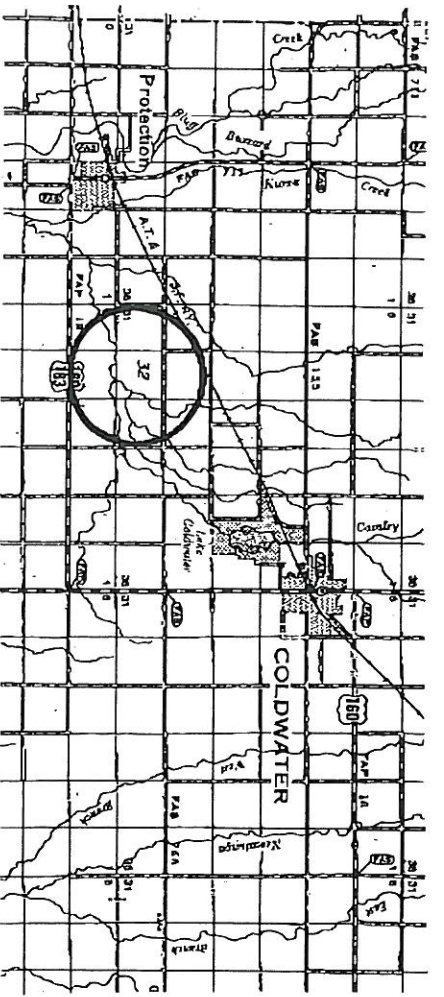


**TRANS PACIFIC OIL CORPORATION**  
**NELSON/UPTON LEASE**  
**SE. 1/4, SECTION 32, T32S, R19W**  
**COMANCHE COUNTY, KANSAS**

- Notes:**
1. Set iron rod at location site.
  2. All flagging Red & Yellow
  3. Overhead power avoidable at W 1/4 of N. line, Sec. 32.
  4. Kansas One Call System Inc. should be notified before excavation (1-800-344-7233).
  5. CAUTION: Various pipelines in Sec. 32.
  6. Cattle in pasture at date of staking.
  7. Contact landowner for best access.
  8. Location fell on the east edge of large trees, set alternate 100' east.



\*Ingress and egress to location as shown on this plot is per usage only and may not be legally opened for public use. Contact landowner, tenant and county road department for access.



Control 1/16 acre 1/2 added along the east lines and developments available to us are upon a regular basis. All other details concerning the oil lease are to be furnished upon request. We are not responsible for the accuracy of any information obtained from this survey. We do not warrant the accuracy of any information obtained from this survey. We do not warrant the accuracy of any information obtained from this survey. We do not warrant the accuracy of any information obtained from this survey.

CENTRAL KANSAS OILFIELD SERVICES, INC. (620)792-1977

Date: September 25, 2008

