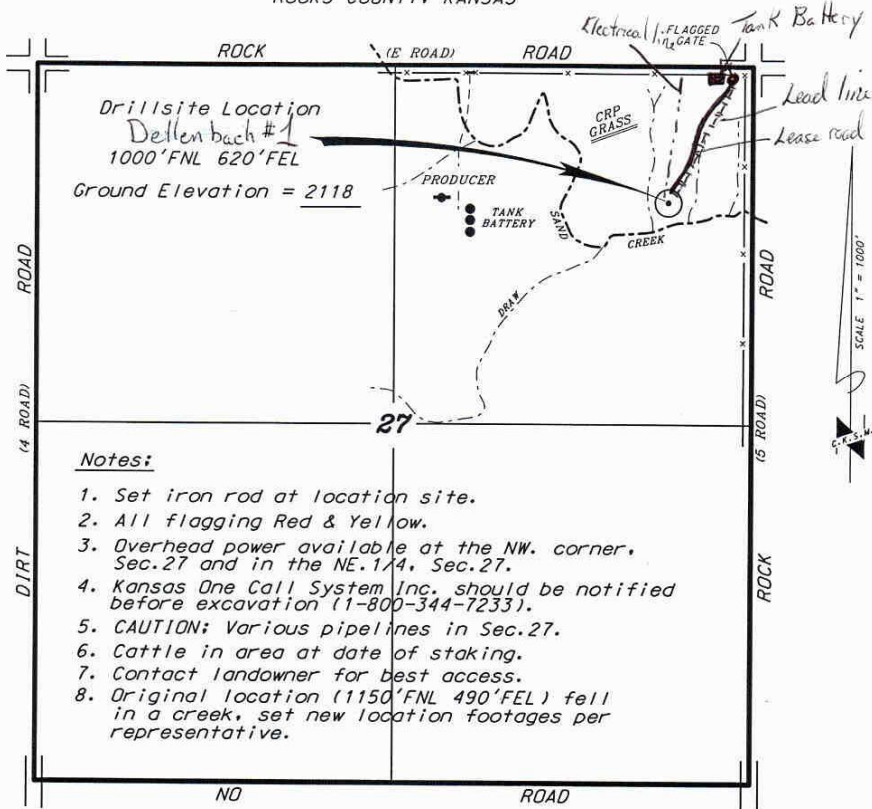
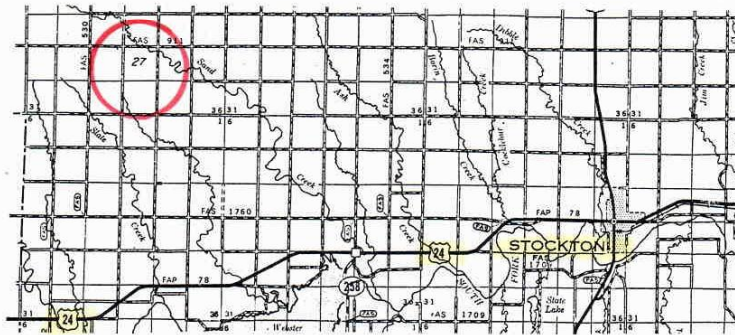


BACH OIL PRODUCTION, INC.
 Dellenbach LEASE
 NE. 1/4, SECTION 27, T6S, R20W
 ROOKS COUNTY, KANSAS



*Ingress and egress to location as shown on this plat is for public use only and may not be legally opened for public use. Contact landowner, tenant and county road department for access.

SCALE 1" = 1000'



*Controlling data is based upon the best maps and photographs available to us and upon a regular section of land containing 640 acres.

*Appropriate section lines were determined using the normal standard of care of oilfield surveyors practicing in the state of Kansas. The section corners, which establish the precise section lines, were not necessarily located, and the exact location of the drillsite location in the section is not guaranteed. Therefore, the operator securing this service and occupying this plat and all other parties relying thereon agree to hold Central Kansas Oilfield Services, Inc., its officers and employees harmless from all losses, costs and expenses and shall not be released from any liability from incidental or consequential damages.

*Elevations derived from National Geodetic Vertical Datum.

Date February 1, 2010

CENTRAL KANSAS OILFIELD SERVICES, INC. (620)792-1977