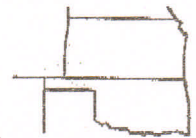


Pro-Stake LLC
 Oil Field & Construction Site Staking
 P.O. Box 2324
 Garden City, Kansas 67846
 Office/Fax: (620) 276-6159
 Cell: (620) 272-1499



b050410-r
 PLAT NO.

8753
 INVOICE NO.

American Warrior

OPERATOR

Precht #1-24

LEASE NAME

Rice County, KS

COUNTY

24 19s 10w
 Sec. Twp. Rng.

Main=93'FNL&2573'FEL=1740.6' gr elev
Alt=100'FNL&2573'FEL=1740.5' gr elev

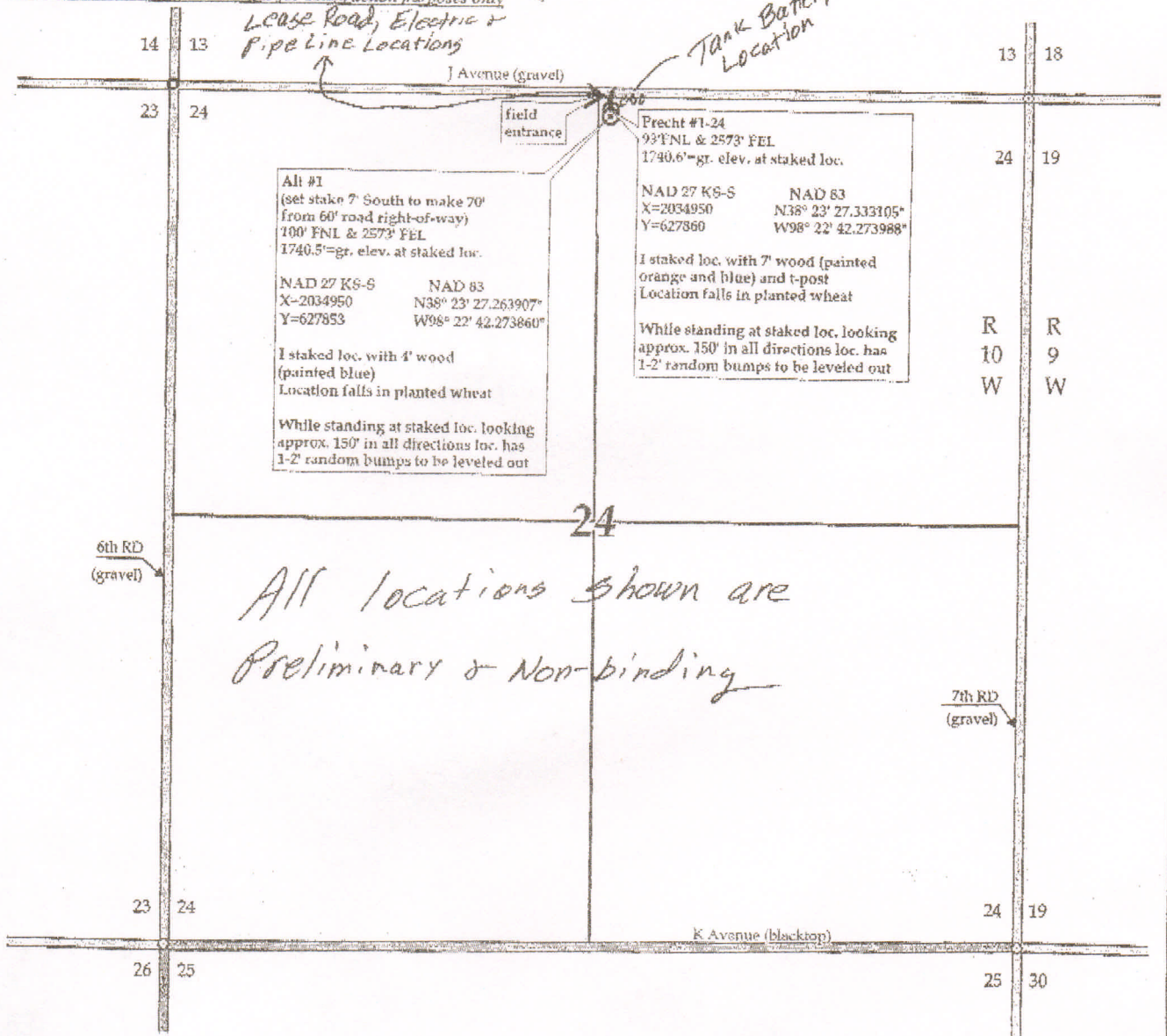
LOCATION SPOT

SCALE: **1" = 1000'**
 DATE STAKED: **May 4th, 2010**
 MEASURED BY: **Ben R.**
 DRAWN BY: **Ben R.**
 AUTHORIZED BY: **Cecil O. & John E.**



Directions: From the center of Lyons, Ks at the intersection of Hwy 56 & Hwy 14 - Now go 9.1 miles West on Hwy 56 - Now go 3 miles North on 7th RD to the NE corner of section 24-19s-10w - Now go 0.5 miles West to ingress South into - Now go 93' South through wheat into staked location.
 Final ingress must be verified with land owner or Operator.

This drawing does not constitute a monumented survey or a land survey plat. This drawing is for construction purposes only.



Lease Road, Electric & Pipe Line Locations

Tank Battery Location

Alt #1
 (set stake 7' South to make 70'
 from 60' road right-of-way)
 100' FNL & 2573' FEL
 1740.5'=gr. elev. at staked loc.
 NAD 27 KS-S NAD 83
 X=2034950 N38° 23' 27.263907"
 Y=627853 W98° 22' 42.273860"
 1 staked loc. with 4' wood
 (painted blue)
 Location falls in planted wheat
 While standing at staked loc. looking
 approx. 150' in all directions loc. has
 1-2' random bumps to be leveled out

Precht #1-24
 93'FNL & 2573' FEL
 1740.6'=gr. elev. at staked loc.
 NAD 27 KS-S NAD 83
 X=2034950 N38° 23' 27.333105"
 Y=627860 W98° 22' 42.273988"
 1 staked loc. with 7' wood (painted
 orange and blue) and t-post
 Location falls in planted wheat
 While standing at staked loc. looking
 approx. 150' in all directions loc. has
 1-2' random bumps to be leveled out

All locations shown are Preliminary & Non-binding