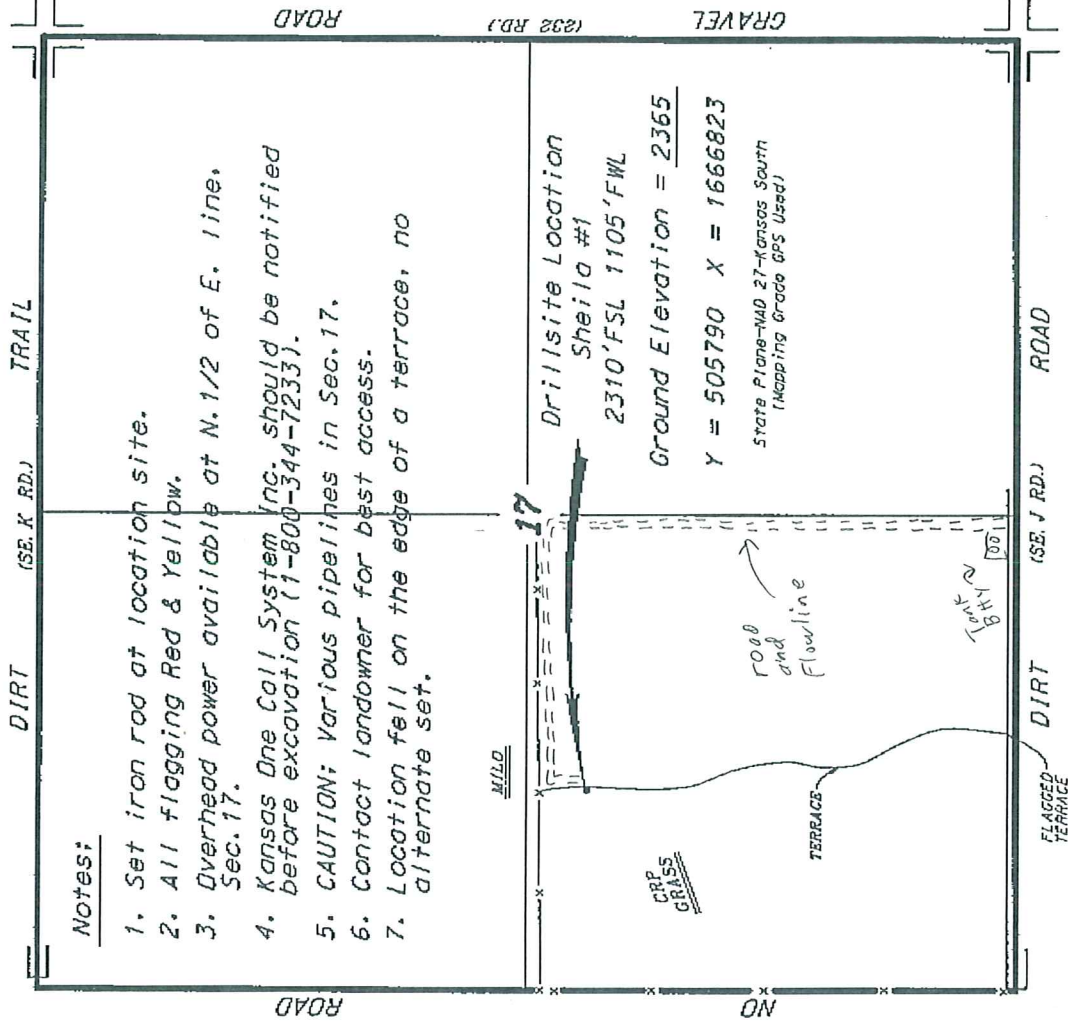


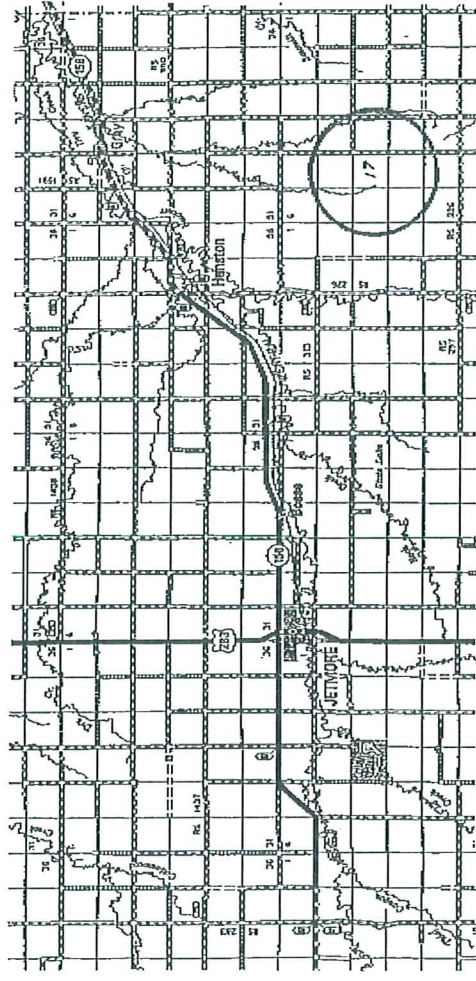
BEREXCO, LLC
 SHEILA LEASE
 SW. 1/4, SECTION 17, T23S, R21W
 HODGEMAN COUNTY, KANSAS



Notes:

1. Set iron rod at location site.
2. All flagging Red & Yellow.
3. Overhead power available at N.1/2 of E. line, Sec.17.
4. Kansas One Call System Inc. should be notified before excavation (1-800-344-7233).
5. CAUTION; Various pipelines in Sec.17.
6. Contact landowner for best access.
7. Location fell on the edge of a terrace, no alternate set.

*Ingress and egress to location as shown on this plot is per usage only and may not be legally opened for public use. Contact landowner, tenant and county road department for access.



* Controlling data is based upon the best maps and photographs available to us and upon a regular section of land containing 640 acres.
 * Elevation section lines were determined using the normal stadia of core of oilfield surveys practicing in the state of Kansas. The section corners, which establish the precise section lines, were not surveyed. Therefore, the accuracy of our 100' grid service and accepting this plot and all other services relying thereon shall be held Central Kansas Oilfield Services, Inc., its officers and employees and its agents and consultants and all statements and data furnished released from any liability from incidental or consequential damages and statements and data furnished released from any liability.
 * Elevations derived from National Geospatial Vertical Datum.

Date September 9, 2010

CENTRAL KANSAS OILFIELD SERVICES, INC. (620)792-1977