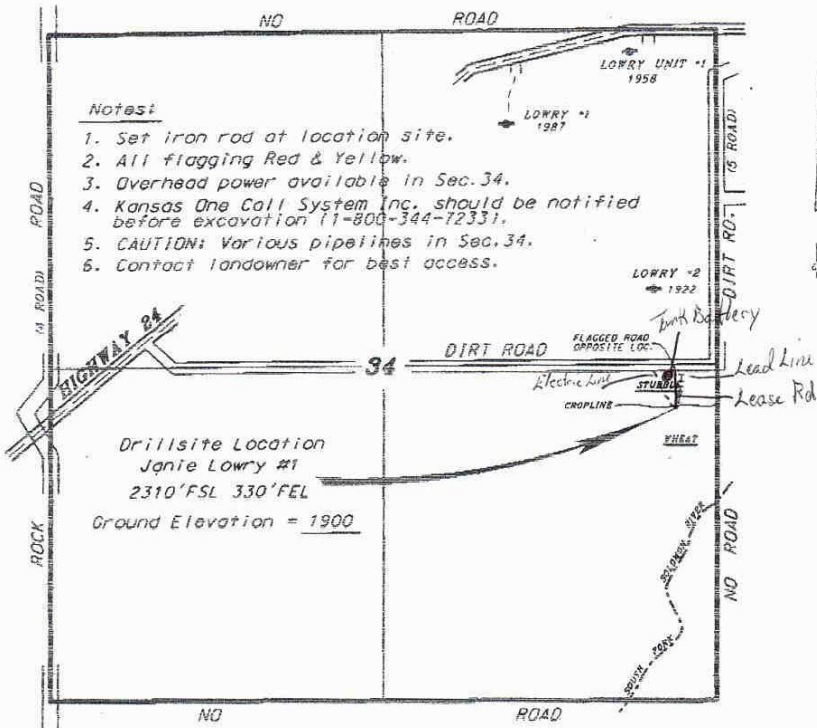
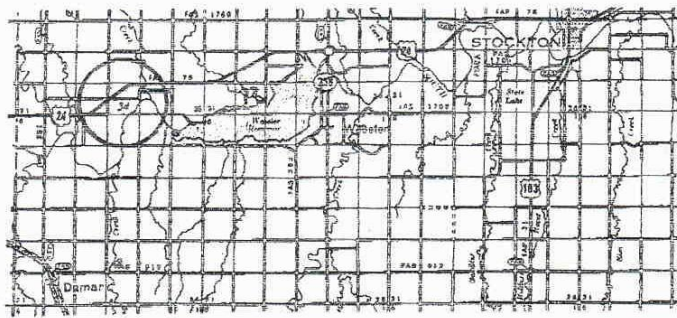


BACH OIL PRODUCTION, INC.  
 JANIE LOWRY LEASE  
 SE. 1/4, SECTION 34, T7S, R20W  
 ROOKS COUNTY, KANSAS



\*Address and access to location as shown on this plot is for access only and may not be legally opened for public use. Contact landowner, tenant and county road department for access.

SCALE 1" = 1000'



\* Contouring data is based upon the best maps and photographs available to us and upon a regular section of 1/4 mile containing 140 acres.  
 \* Approximate section lines were determined using the original 36000000 of acre of original survey platting in the state of Kansas. The section corners, which surround the drilled section lines, are not necessarily correct, and the same applies to the drilled location in the section is not guaranteed. Therefore, the purchaser accepting this service and accepting this plot and all other parties relating thereto agree to hold Central Kansas Oilfield Services, Inc., its officers and employees harmless from all claims, suits and expenses and hold harmless Released from any liability from the cause of consequential damages.  
 \* Elevations derived from National Geodetic Vertical Datum.

Date September 14, 2010