

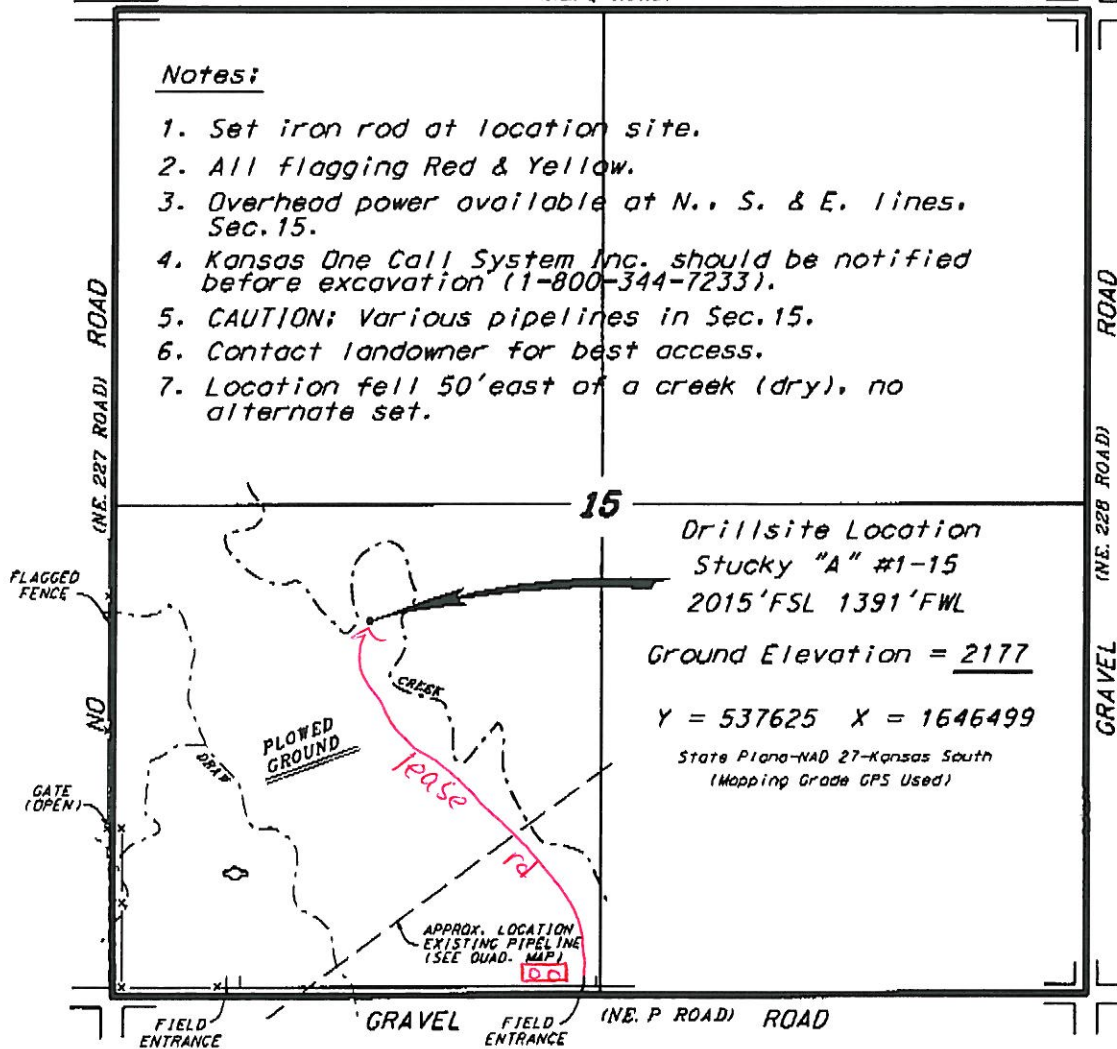
TRANS PACIFIC OIL CORPORATION
STUCKY LEASE
SW.1/4, SECTION 15, T22S, R22W
HODGEMAN COUNTY, KANSAS

GRAVEL (INE. Q ROAD) ROAD

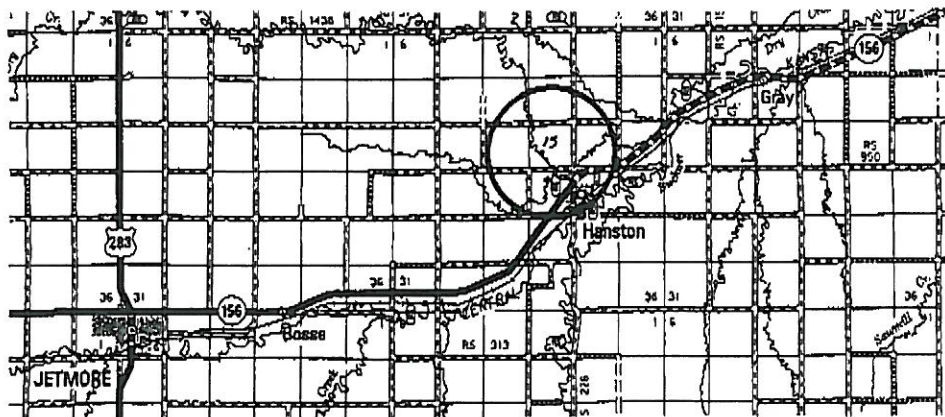
Notes:

1. Set iron rod at location site.
2. All flagging Red & Yellow.
3. Overhead power available at N., S. & E. lines, Sec. 15.
4. Kansas One Call System Inc. should be notified before excavation (1-800-344-7233).
5. CAUTION: Various pipelines in Sec. 15.
6. Contact landowner for best access.
7. Location fell 50' east of a creek (dry), no alternate set.

*Ingress and egress to location as shown on this plat is per usage only and may not be legally opened for public use. Contact landowner, tenant and county road department for access.



Drillsite Location
Stucky "A" #1-15
2015' FSL 1391' FWL
Ground Elevation = 2177
Y = 537625 X = 1646499
State Plane-NAD 27-Kansas South
(Mapping Grade GPS Used)



* Controlling data is based upon the best maps and photographs available to us and upon a regular section of land containing 640 acres.
 * Approximate section lines were determined using the normal standard of care of oilfield surveyors practicing in the State of Kansas. The section corners, when established, the precise section lines were not necessarily located, and the exact location of the drillsite location in the section is not guaranteed. Therefore, the operator assuming this service and accepting this plat and all other parties relying thereon agree to hold Central Kansas Drilling Services, Inc., its officers and employees harmless from all claims, costs and expenses and said entities released from any liability from incidental or consequential damages.
 * Elevations derived from National Geodetic Vertical Datum.

Date September 23, 2010