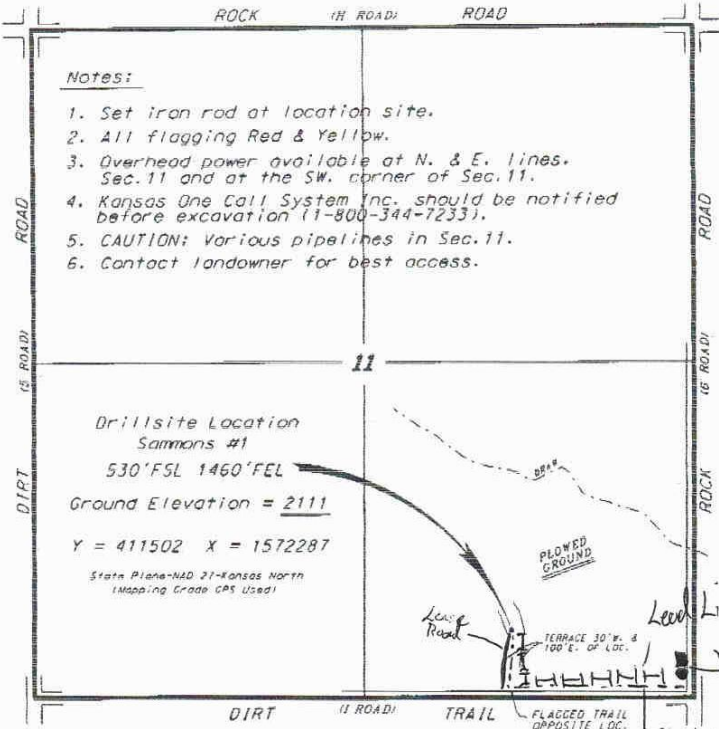


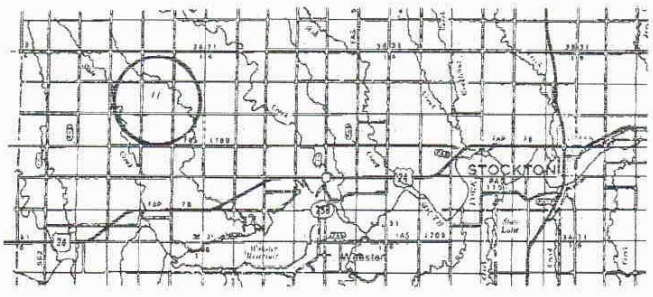
BACH OIL PRODUCTION, INC.  
SAMMONS LEASE  
SE. 1/4, SECTION 11, T7S, R20W  
ROCKS COUNTY, KANSAS



\*Egress and access to location as shown on this plot is for usage only and may not be legally approved for public use. Contact appropriate land and county road department for access.

Notes:

1. Set iron rod at location site.
2. All flagging Red & Yellow.
3. Overhead power available at N. & E. lines. Sec. 11 and at the SW. corner of Sec. 11.
4. Kansas One Call System Inc. should be notified before excavation (1-800-344-7233).
5. CAUTION: Various pipelines in Sec. 11.
6. Contact landowner for best access.



\* Contouring was done with the best maps and photographs available to us and with a regular section of 1/2nd containing 640 acres.  
 \* Elevation section lines were determined as the normal standard of 60% of oil field surveys operating in the state of Kansas. The section corners, which establish the precise section lines, were not necessarily located, and the exact location of the drillsite location in the section is not guaranteed. Therefore, the operator reporting this location and operating this well and all other activities involving thereon agree to hold Central Kansas Oilfield Services, Inc. its officers and employees harmless from all claims, suits and demands and all damages caused by this well, its operation or maintenance or otherwise.  
 \* Elevation derived from National Geodetic Vertical Datum.

Date September 24, 2010

CENTRAL KANSAS OILFIELD SERVICES, INC. (620)792-1977