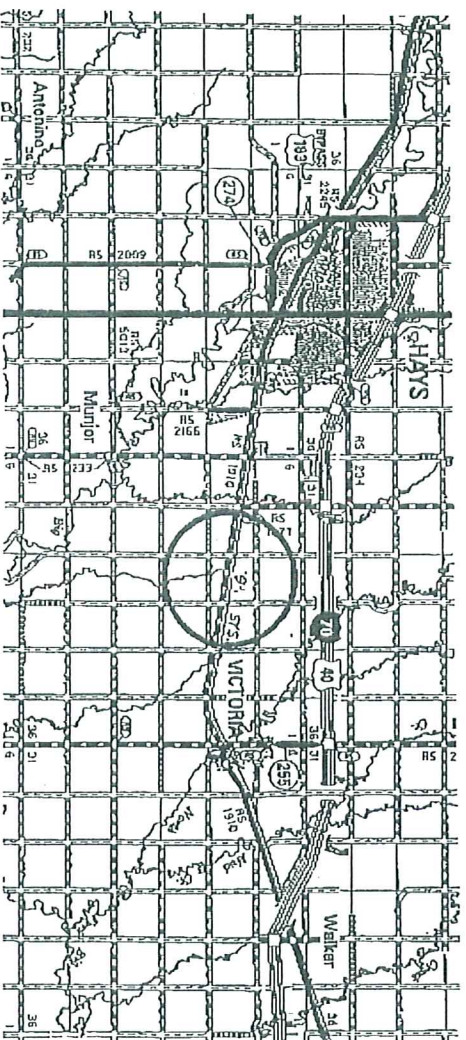
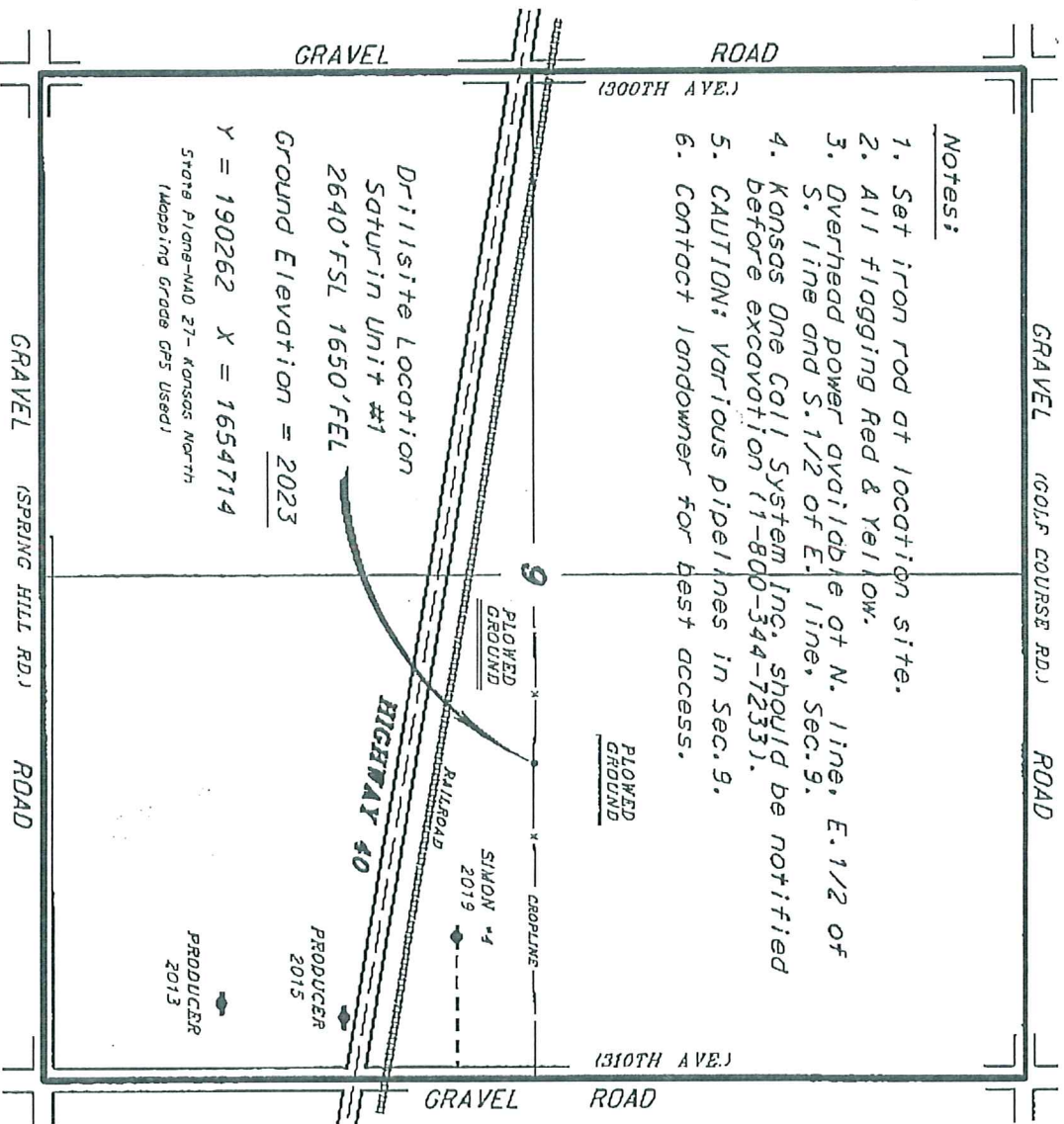


BEREXCO, LLC
SATURIN UNIT LEASE
E. 1/2, SECTION 9, T14S, R17W
ELLIS COUNTY, KANSAS

- Notes:
1. Set iron rod at location site.
 2. All flagging Red & Yellow.
 3. Overhead power available at N. line, E. 1/2 of S. 1/2 and S. 1/2 of E. 1/2, Sec. 9.
 4. Kansas One Call System Inc. should be notified before excavation (1-800-344-1233).
 5. CAUTION: Various pipelines in Sec. 9.
 6. Contact landowner for best access.



*Ingress and egress to location as shown on this plot is per usage only and may not be legally opened for public use. Contact landowner, tenant and county road department for access.

Control/ing data is based upon the best map and photographs available to us and upon a regular section of land concerning the acreage.

Appropriate section lines were determined using the normal steeper of one of 0.111919 surveys projecting in the grids of Kansas. The section corners, which are 1900, 1910, and 1920, were not necessarily measured, and the area between the section corners of the 1910 and 1920 surveys may vary slightly from the original section corners. The area between the section corners of the 1910 and 1920 surveys may vary slightly from the original section corners. The area between the section corners of the 1910 and 1920 surveys may vary slightly from the original section corners. The area between the section corners of the 1910 and 1920 surveys may vary slightly from the original section corners.

DATE September 24, 2010
CENTRAL KANSAS OILFIELD SERVICES, INC. (620)792-1977