

GEOLOGIST'S REPORT

DRILLING TIME AND SAMPLE LOG

COMPANY BACH OIL PROD

LEASE Vera Jackson A #1

FIELD WILDCAT

LOCATION 1213' FSL & 1712' FWL

SEC. 36 **TWP.** 1 **RGE.** 19W

COUNTY PHILLIPS **STATE** KANSAS

DRILLING CONTR. AMERICAN EAGLE

SPUD 7/13/10 **COMP** 7/17/10

RTD 3688 **LTD** 3688

MUD UP 2900 **TYPE MUD** CHEMICAL

SAMPLES SAVED FROM 2900 **TO** RTD

DRILL TIME KEPT FROM 2900 **TO** RTD

SAMPLES EXAMINED FROM 2900 **TO** RTD

GEOLOGICAL SUPERVISION FROM 3100 **TO** RTD

GEOLOGIST ROBERT J. PETERSEN LIC. #167

API # 15-167-20629-00-00

ELEVATION

KB 2251'

DF

GL 2246'

This log measured from: K.B.

SURFACE CASING:

8 5/8"
Set @248'
W/175SX

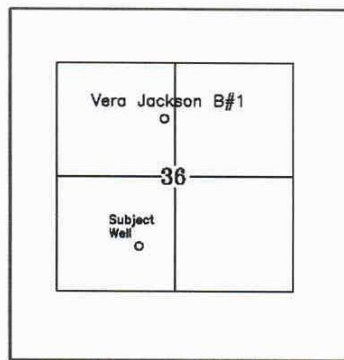
PRODUCTION CASING:

5 1/2" Casing Set

WELL LOG SURVEYS

RAG

FORMATION	E-LOG TOP	SUBSEA	STRUCT. POS.
BASE FT HAYS	650	+1601	+6
STONE CORRAL	1822	+429	+5
BASE STONE CORRAL	1847	+404	-1
TOPEKA	3170	-919	-2
HEEBNER	3384	-1133	-3
TORONTO	3410	-1159	FLAT
LANSING	3428	-1177	FLAT
BKC	3647	-1396	-1



REFERENCE WELL

Bach Oil
Barbara #1
680' FSL & 400' FEL
35-1-19W
EL 2206KB

DAILY REPORT 7:00 A.M.

7-13-10 MIRU SPUD
7-14-10 710'
7-15-10 2525'
7-16-10 3360'

680' FSL & 400' FEL
35-1-19W
EL 2206KB

7-15-10 2525'

7-16-10 3360'

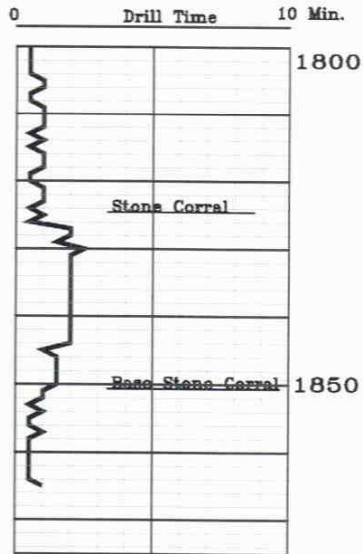
7-17-10 3688'

REMARKS AND RECOMMENDATIONS

Production casing was set to further test this well.

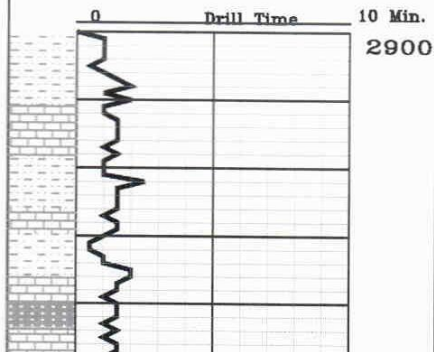
Respectfully submitted,

Robert Petersen



NOTE:

E-LOG TOPS ARE 3' HIGH TO SAMPLE LOG TOPS



Sample Description

SH; Gray + SS; Lt gray, fine gray, silty + LS; Gray, fine crystalline, chalky w/dead oil flakes (30)

LS; Cream/tan, fine crystalline, foss., chalky + SS; Gray/white, fine grained, silty, friable + SH; Red/gray (60)

