

GEOLOGIST'S REPORT DRILLING TIME AND SAMPLE LOG

COMPANY BACH OIL PROD

LEASE KAUK-VAN KOOTEN UNIT #1

FIELD WILDCAT

LOCATION 1341' FSL & 166' FEL

SEC. 3 **TWP.** 2 **RGE.** 19W

COUNTY PHILLIPS **STATE** KANSAS

DRILLING CONTR. MURFIN RIG #16

SPUD 7/6/10 **COMP** 7-11-10

RTD 3750' **LTD** 3738'

MUD UP 2900 **TYPE MUD** CHEMICAL

SAMPLES SAVED FROM 2900 **TO** RTD

DRILL TIME KEPT FROM 2900 **TO** RTD

SAMPLES EXAMINED FROM 2900 **TO** RTD

GEOLOGICAL SUPERVISION FROM 3100 **TO** RTD

GEOLOGIST ROBERT J. PETERSEN LIC. #167

API # 15-147-20630-00-00

ELEVATION

KB 2197'

DF

GL 2192'

This log measured from: **K.B.**

SURFACE CASING:

217.9' of 8 5/8" casing set @224' w/150 SX

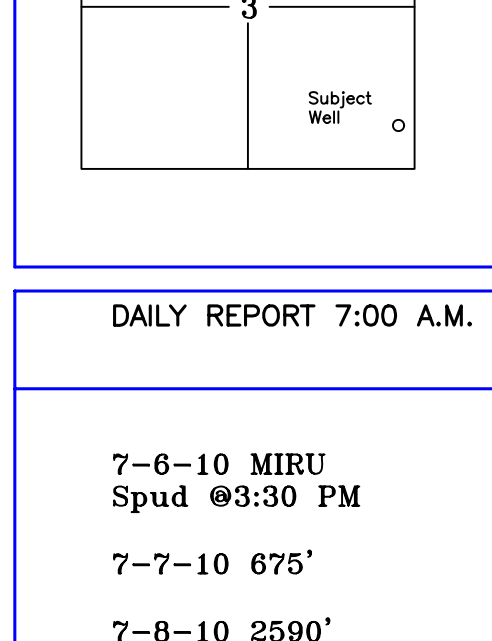
PRODUCTION CASING:

5 1/2" Casing Run

WELL LOG SURVEYS

RAG/SONIC/MICRO

FORMATION	E-LOG TOP (see note)	SUBSEA	STRUCT. POS.
BASE FT HAYS	556	+1641	+7
STONE CORRAL	1755	+442	+11
BASE STONE CORRAL	1776	+421	+8
TOPEKA	3101	-904	+7
HEEBNER	3315	-1118	+6
TORONTO	3353	-1156	+2
LANSING	3364	-1167	+5
BKC	3577	-1380	N/A
Arbuckle	3723	-1526	N/A



DAILY REPORT 7:00 A.M.

7-6-10 MIRU Spud @3:30 PM

7-7-10 675'

7-8-10 2590'

7-9-10 3315'

7-10-10 3535'

7-11-10 3750' Running casing

REFERENCE WELL

Thoroughbred Associates
Mousley #1
SW SW NE
11-2-19W
KB 2251

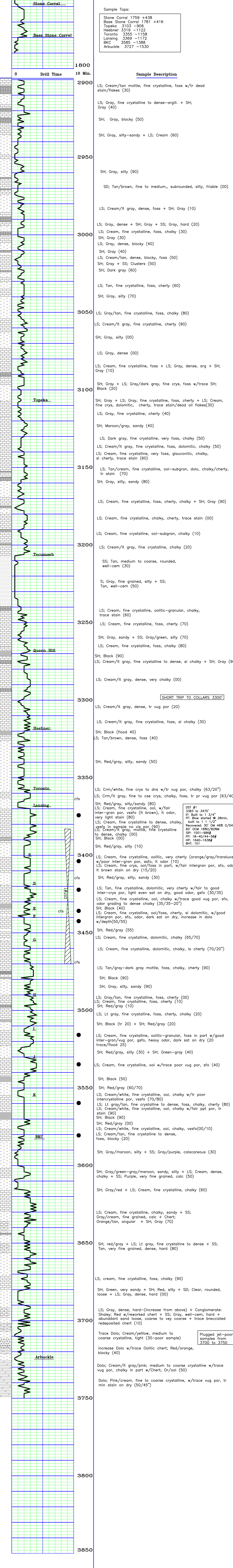
NOTE: Log total depth = 3738' Drill time total depth = 3750'. E-log tops are about 6 feet high to drill time. Estimated fill at bottom of hole 6 to 7 feet. Sample tops provided below.

REMARKS AND RECOMMENDATIONS

Production casing was set to further test this well.

Respectfully submitted,

Robert Petersen



Sample Tops:

Stone Corral	1759 +438
Base Stone Corral	1781 +416
Topeka	3103 -906
Heebner	3319 -1122
Toronto	3355 -1158
Lansing	3369 -1172
BKC	3585 -1388
Arbuckle	3727 -1530

Sample Description

LS; Cream/tan mottle, fine crystalline, foss w/tr dead stain/flakes (30)

LS; Gray, fine crystalline to dense-argill. + SH; Gray (40)

SH; Gray, blocky (50)

SH; Gray, silty-sandy + LS; Cream (60)

SH; Gray, silty (90)

SD; Tan/brown, fine to medium,, subrounded, silty, friable (00)

LS; Cream/lt gray, dense, foss + SH; Gray (10)

LS; Gray, dense + SH; Gray + SS; Gray, hard (20)

LS; Cream, fine crystalline, foss, chalky (30)

SH; Gray (30)

LS; Gray, dense, blocky (40)

SH; Gray (40)

LS; Cream/tan, dense, blocky, foss (50)

SH; Gray + SS; Clusters (50)

SH; Dark gray (60)

LS; Tan, fine crystalline, foss, cherty (60)

SH; Gray, silty (70)

LS; Gray/tan, fine crystalline, foss, chalky (80)

LS; Cream/lt gray, fine crystalline, cherty (90)

SH; Gray, silty (00)

LS; Gray, dense (00)

LS; Cream, fine crystalline, foss + LS; Gray, dense, arg + SH; Gray (10)

SH; Gray + LS; Gray/dark gray, fine crys, foss w/trace SH; Black (20)

SH; Gray + LS; Gray, fine crystalline, foss, cherty + LS; Cream, fine crys, dolomitic, cherty, trace stain/dead oil flakes(30)

LS; Gray, fine crystalline, cherty (40)

SH; Maroon/gray, sandy (40)

LS; Dark gray, fine crystalline, very foss, chalky (50)

LS; Cream/lt gray, fine crystalline, foss, dolomitic, chalky (50)

LS; Cream, fine crystalline, very foss, glauconitic, chalky, sl cherty, trace stain (60)

LS; Tan/cream, fine crystalline, ool-subgran, dolo, chalky/cherty, tr stain (70)

SH; Gray, silty, sandy (80)

LS; Cream, fine crystalline, foss, cherty, chalky + SH; Gray (90)

LS; Cream, fine crystalline, chalky, cherty, trace stain (00)

LS; Cream, fine crystalline, ool-subgran, chalky (10)

LS; Cream/lt gray, fine crystalline, chalky (20)

SS; Tan, medium to coarse, rounded, well-cem (30)

S; Gray, fine grained, silty + SS; Tan, well-cem (50)

LS; Cream, fine crystalline, oolitic-granular, chalky, trace stain (60)

LS; Cream, fine crystalline, foss, cherty (70)

SH; Gray, sandy + SS; Gray/green, silty (70)

LS; Cream, fine crystalline, foss, chalky (80)

SH; Black (90)

LS; Cream/lt gray, fine crystalline to dense, sl chalky + SH; Gray (90)

LS; Cream/lt gray, dense, very chalky (00)

SHORT TRIP TO COLLARS 3300'

LS; Cream/lt gray, dense, tr vug por (20)

LS; Cream/lt gray, fine crystalline, foss, sl chalky (30)

SH; Black (ft 40)

LS; Tan/brown, dense, foss (40)

SH; Red/gray, silty, sandy (50)

LS; Crm/white, fine crys to dns w/tr vug por, chalky (63/20")

LS; Crm/lt gray, fine to cse crys, chalky, foss, tr pr vug por (63/40")

SH; Red/gray, silty/sandy (80)

LS; Cream, fine crystalline, ool, w/fair inter-gran por, vssfo (lt brown), lt odor, very light stain (80)

LS; Cream, fine crystalline to dense, chalky, vssfo in sample no vis por (90)

LS; Cream/lt gray, mottle, fine crystalline to dense, chalky (00)

SH; Black (00)

SH; Red/gray, silty (10)

LS; Cream, fine crystalline, oolitic, very cherty (orange/gray/translucent) w/poor inter-gran por, sso, lt odor (10)

LS; Cream, fine crys, ool/foss in part, w/fair intergran por, sfo, odor, lt brown stain on dry (15/20)

SH; Red/gray, silty, sandy (30)

LS; Tan, fine crystalline, dolomitic, very cherty w/fair inter-gran por, light even sat on dry, good odor, gsfo (30/35)

LS; Cream, fine crystalline, ool, chalky w/trace good vug por, sfo, odor grading to dense chalky (35/35-20")

SH; Black (40)

LS; Cream, fine crystalline, ool/foss, cherty, sl dolomitic, w/good intergran por, sfo, odor, dark sat on dry, increase in dolo w/depth(50/55)

SH; Red/gray (55)

LS; Cream, fine crystalline, dolomitic, chalky (65/70)

LS; Cream, fine crystalline, dolomitic, chalky, ls cherty (70/20")

LS; Tan/gray-dark gray mottle, foss, chalky, cherty (90)

SH; Black (90)

SH; Gray, silty, sandy (90)

LS; Gray/tan, fine crystalline, foss, cherty (00)

LS; Cream, fine crystalline, foss, cherty (10)

SH; Red/gray (10)

LS; Lt gray, fine crystalline, foss, cherty, chalky (20)

SH; Black (tr 20) + SH; Red/gray (20)

LS; Cream, fine crystalline, oolitic-granular, foss in part w/good inter-gran/vug por, gsfo, heavy odor, dark sat on dry (20 trace/flood 25)

SH; Red/gray, silty (30) + SH; Green-gray (40)

LS; Cream, fine crystalline, ool w/trace poor vug por, sfo (40)

SH; Black (50)

SH; Red/gray (60/70)

LS; Cream/white, fine crystalline, ool, chalky w/tr poor intercrystalline por, vssfo (70/80)

LS; Lt gray/tan, fine crystalline to dense, foss, chalky, cherty (80)

LS; Cream/white, fine crystalline, ool, chalky w/fair ppt por, tr stain (90)

SH; Black (90)

SH; Red/gray (00)

LS; Cream/white, fine crystalline, ool, chalky, vssfo(00/10)

LS; Cream/tan, fine crystalline to dense, foss, blocky (20)

SH; Gray/maroon, silty + SS; Gray/purple, calcareous (30)

SH; Gray/green-gray/maroon, sandy, silty + LS; Cream, dense, chalky + SS; Purple, very fine grained, calc (50)

SH; Gray/red + LS; Cream, fine crystalline, chalky (60)

LS; Cream, fine crystalline, chalky, sandy + SS; Gray/cream, fine grained, calc + Chert; Orange/tan, angular + SH; Gray (70)

SH; red/gray + LS; Lt gray, fine crystalline to dense + SS; Tan, very fine grained, dense, hard (80)

LS; cream, fine crystalline, foss, chalky (90)

SH; Green, very sandy + SH; Red, silty + SD; Clear, rounded, loose + LS; Gray, dense, hard (00)

LS; Gray, dense, hard-(increase from above) + Conglomerate: Shaley, Red w/reworked chert + SS; Gray, well-cem, hard + abundant sand loose, coarse to vey coarse + trace brecciated redeposited chert (10)

Trace Dolo; Cream/yellow, medium to coarse crystalline, tight (30-poor sample)

increase Dolo w/trace Oolitic chert; Red/orange, blocky (40)

Plugged jet-poor samples from 3700 to 3750

Dolo; Cream/lt gray/pink; medium to coarse crystalline w/trace vug por, chalky in part w/Chert; Or/ool (50)

Dolo; Pink/cream, fine to coarse crystalline, w/trace vug por, tr min stain on dry (50/45")