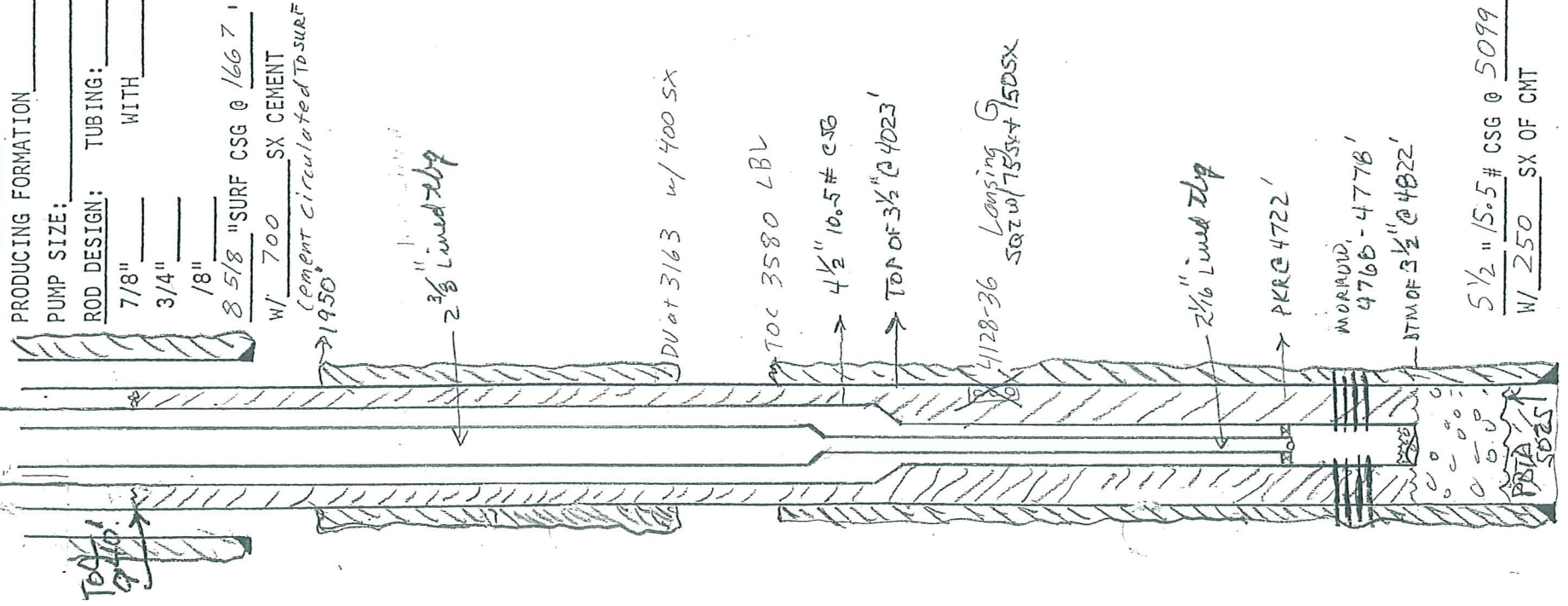


API: 15-093-21121-0001
1485' FSC, 2145' FEL

LEASE Patterson Unit (Tenso #1 sud) WELL NO. 6-5
 LOCATION SE-Sunrise 5-23-37 COUNTY Keary STATE KS
 OPERATOR Patterson FIELD Patterson
 ELEVATION: GR _____ DF _____ KB 3308
 DATE DRILLED 10/90 ZERO MEASUREMENT _____

PRODUCING FORMATION _____ SET AT _____ FEET
 PUMP SIZE: _____ TUBING: _____ JTS OF _____ TBG
 ROD DESIGN: _____ WITH _____ 'M.A. SET @ _____

1/91 Drill out to 5025, test casing to 1000# - OK. Perf Lansing @ 4128-36
 Acidize w/ 2500 gal 20% NE w/ ball sealers
 JH w/ tubing & packer at 4088 (2 3/8" tubing)
 MIT to 500#
 Permitted for 1000 BWPD at 800 PSI max
 1194 Acidize w/ 750 gal 15%
 5195 Acidize w/ 750 gal 15%
 7/16-10.5/16 SQ 4128-36 w/ 755x com. DOC thru 502 but then hit hard sand in cap below 4136. Took 17 days to drill 4200-4879'. RPA 4128-36 w/ 150SX - did not get API. DOC & scale 4871'. Took 21 days. Sumect
 Fracturing compound 4871' & 4871' - did not
 Ran 800 @ 3 1/2" 7.50# 3.000 in line pump from intermediate
 + 4 1/2" 10.5# cap w/ alum and collars. Ran 2000 @ 3 1/2"
 to 4822' KA. Cemented w/ 100% 60/40 @ 4822' w/ 4879' COM
 CEMENT TO SEPARATING + NEW 90' FEET
 DOC in line to 4829' KB. Ran bond log 1000' 940'.
 TD on log @ 4822' 7048 3 1/2" @ 4023'. Ran Morrow
 4768-4778' KA 4.5# 15.00' 1000 @ 7' 1/2" 1200' 7000'
 ISH 1000# 2 min on UOZ. Ran around 507-1 3/4' P.M.
 2874 (903') 2 1/4" seal top lined by 150 SX 2 3/8" and
 tube lined 2 1/4". Set 7-11 @ 4722" MIT to 500#.



DST #1 Morrow 15'M, 228# - test missed sand - too high
 DST #2 Morrow 30'M, 637' W, 424#
 [had 12' Morrow sand, but wet]