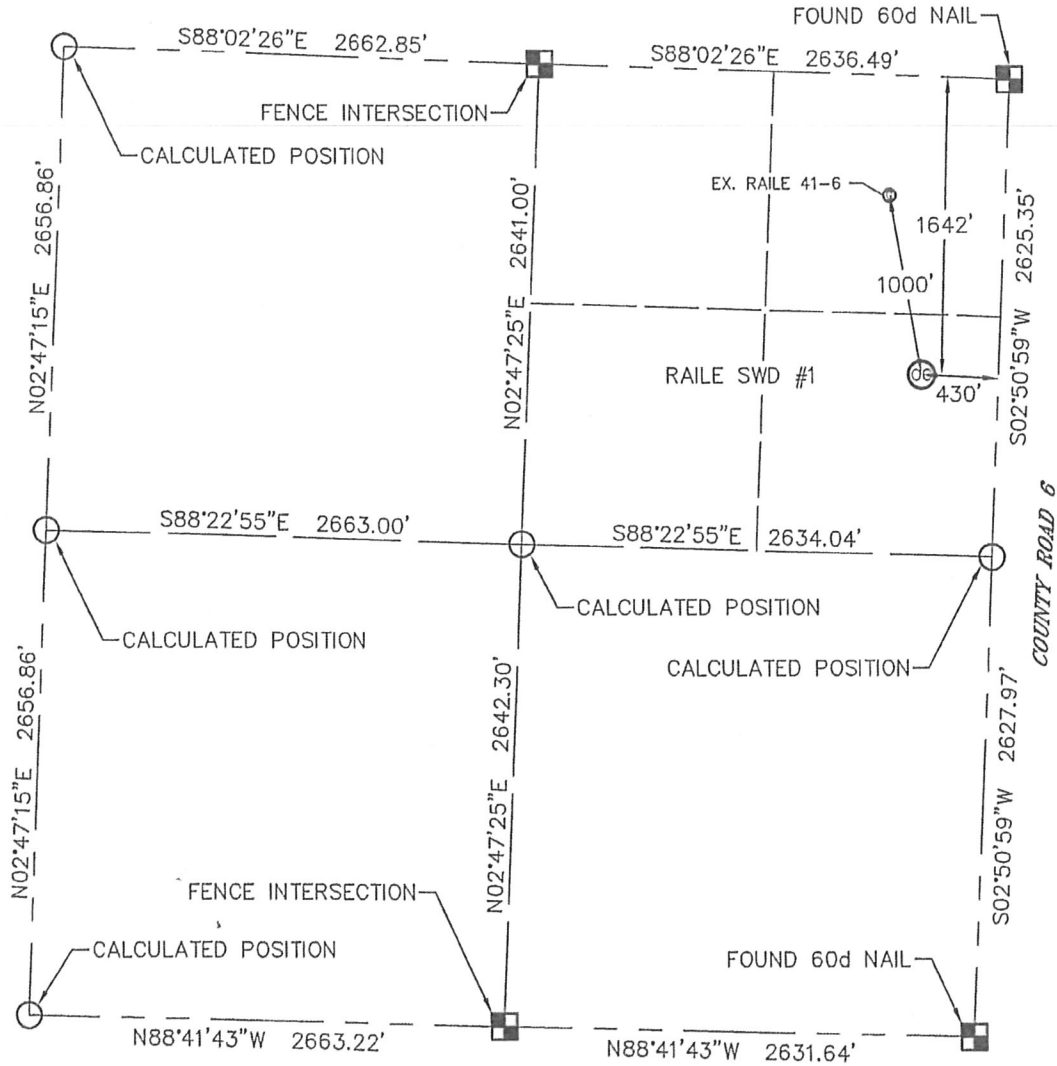


WELL LOCATION CERTIFICATE

RAILE SWD #1

THIS MAP DOES NOT REPRESENT A BOUNDARY SURVEY

SECTION: 6
TOWNSHIP: 4S
RANGE: 41W



In accordance with a request from DAVID LEDEI with NOBLE ENERGY, INC. King Surveyors Inc. has determined the surface location of RAILE SWD #1 to be 1642' from the NORTH line and 430' from the East line, as measured at right angles, from the section lines of Section 6, Township 4 South, Range 41 West of the Sixth Principal Meridian, County of Cheyenne, State of Kansas.

I hereby state that this Well Location Certificate was prepared by me, or under my direct supervision, that the fieldwork was completed on 9-13-2010, for and on behalf of NOBLE ENERGY INC. That this is not a Land Survey Plat or an Improvement Survey Plat, and that it is not to be relied upon for establishment of fence, building, or other future improvement lines.

SURFACE LOCATION
LATITUDE: 39.73735°N
LONGITUDE: 101.95765°W
PDOP: 1.4
ELEV: 3601'
1/4, 1/4; SE1/4 NE1/4
NEAREST PROPERTY LINE: 430' EAST

- NOTE:
- 1) Bearings shown are Grid Bearings of the Kansas State Plane Coordinate System, North Zone, North American Datum 1983/2007, based on static GPS observations processed through OPUS on 2-9-2010. The lineal dimensions as contained herein are based upon the "U.S. Survey Foot."
 - 2) Ground elevations are based on an observed GPS elevation (NAVD 1988 DATUM).
 - 3) NEAREST EXISTING WELL: RAILE 41-6 1000' NORTH-NORTHWEST
 - 4) IMPROVEMENTS: See LOCATION DRAWING for all visible improvements within 400' of well head.
 - 5) SURFACE USE: CROP FIELD

LEGEND

- = ALIQUOT MONUMENT AS DESCRIBED
- = CALCULATED POSITION

Rodney A. Walters, On Behalf of King Surveyors, Inc.
Kansas Licensed Professional Land Surveyor #838

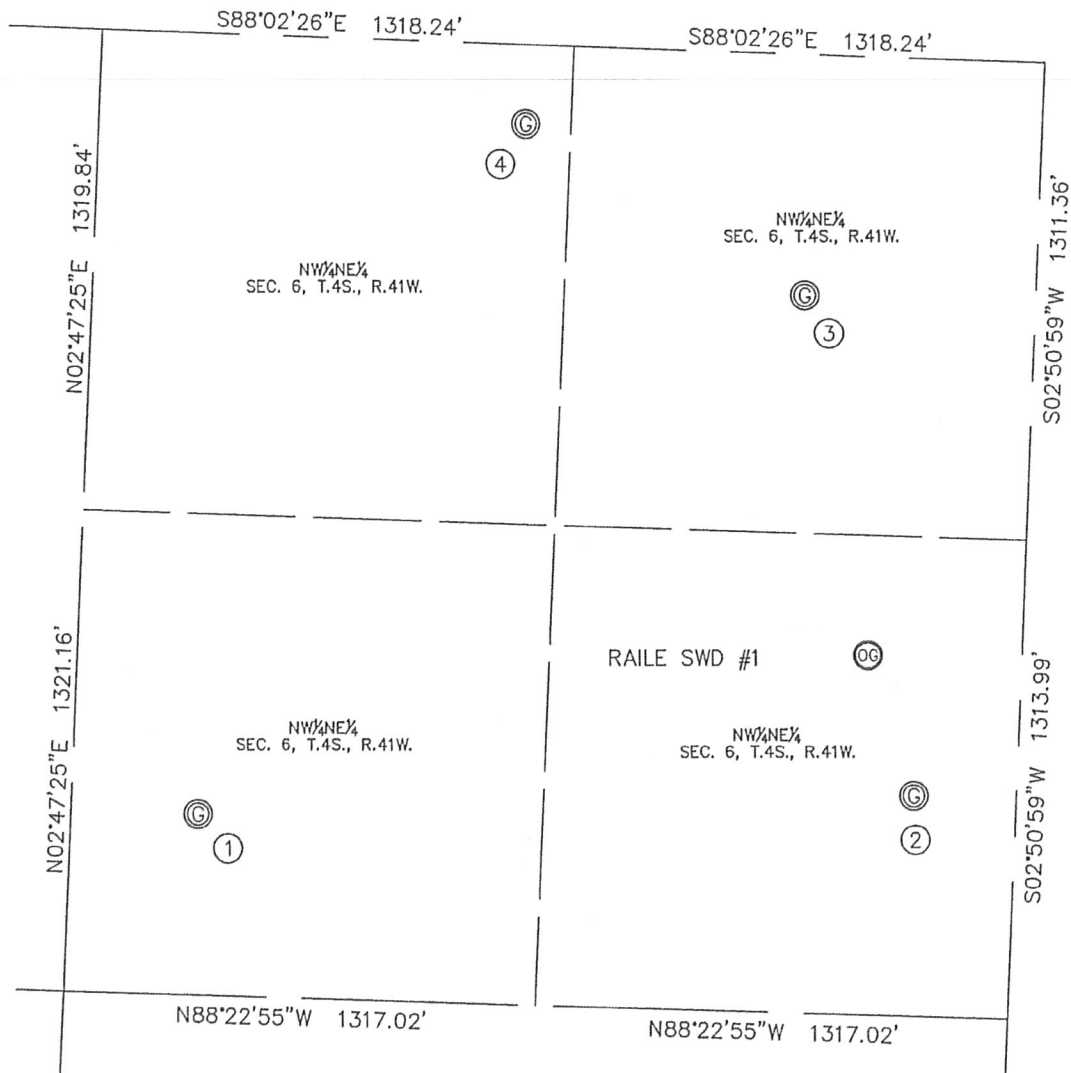


09-24-10

PROJECT#: 2010377

KING SURVEYORS, INC. 650 E. GARDEN DR. WINDSOR, CO 80550
SITE SKETCH
 RAILE SWD #1

SECTION: 6
 TOWNSHIP: 4S
 RANGE: 41W

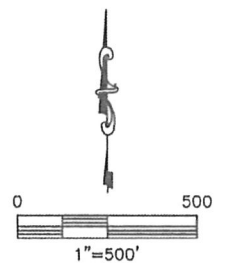


①
 RAILE 32-6
 SW1/4 NE1/4
 2143' FNL
 2278' FEL
 LAT-39.73593°N
 LONG-101.96423°W
 PDOP: 1.6
 ELEV: 3579'

②
 RAILE 42-6
 SE1/4 NE1/4
 2023' FNL
 286' FEL
 LAT-39.73631°N
 LONG-101.95715°W
 PDOP: 1.6
 ELEV: 3597'

③
 RAILE 41-6
 NE1/4 NE1/4
 662' FNL
 645' FEL
 LAT-39.74004°N
 LONG-101.95840°W
 PDOP: 2.5
 ELEV: 3594'

④
 RAILE 31-6
 NW1/4 NE1/4
 218' FNL
 1446' FEL
 LAT-39.74124°N
 LONG-101.96123°W
 PDOP: 1.4
 ELEV: 3626'



PROJECT#: 2010377

KING SURVEYORS, INC. 650 E. GARDEN DR. WINDSOR, CO 80550

HYDROLOGY MAP

RAILE SWD #1

SECTION: 6
TOWNSHIP: 4S
RANGE: 41W

