



Woolsey Operating Company, LLC

Scale 1:240 (5"=100') Imperial
Measured Depth Log

Well Name: Schooley A-1 OWWO SWD
Location: Approx. C NE SW
License Number: 15-007-20640-00-01
Spud Date: June 1, 2010
Surface Coordinates: 1990' FSL & 2015' FWL Sec 4 Twp35S-Rge 11W
Region: Barber Co, KS
Drilling Completed: June 8, 2010

Bottom Hole Coordinates: Verticle Hole

Ground Elevation (ft): 1360' K.B. Elevation (ft): 1370'
Logged Interval (ft): Surface To: 5552' Total Depth (ft): 5862'
Formation: Total Depth in Arbuckle
Type of Drilling Fluid: Chemical Displaced at old TD of 5170'

Printed by WellSight Log Viewer from WellSight Systems 1-800-447-1534 www.WellSight.com

OPERATOR

Company: Woolsey Operating Company,LLC
Address: 125 N. Market, Suite 1000
Wichita, KS 67202

GEOLOGIST

Name: Billy G. Klaver
Company: Woolsey Operating Co. LLC
Address: 125 N. Market, Wichita Kansas, 67202

COMMENTS

Surface Casing: Existing casing of 10 3/4", was set at 255' KB.
Production Casing: 5 1/2' X 12.50#

Deviation Surveys: 1 degree at 5575' (rotary), 5552' (logger)

Pipe Strap .20' short to the board, no correction made.

WOC Bit Record:

#1 7 7/8' JZ RR in at surface, out at 5575'

#2 7 7/8" Reed HS 884 in at 5575', out at 5862'

Gas Detector: Woolsey Operating Co. Gas Trailer #2

Mud System: Mud Co. Brad Bortz, Engineer

DSTs: No Tests

OH Logs: Halliburton, Dual Induction Microlog w/SP-GR, CNL-FDC w/PE, GR and caliper, DiPole Sonic w/GR.

Todd Bridgeman, Logging Engineer.

DSTs/Remarks



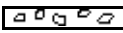



No formation tests were ran.






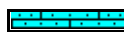
E-logs tops were 21' high to rotary depths. Pipe strap taken at logging depth measured .20' short to the board. No obvious errors could be found when the board was refigured. Original rotary and loggers depths were 5170' when drilled in 1978. Val Energy Rig #3 wash down total depth was 5184'. The 21' drilling depth difference remains a mystery.


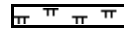

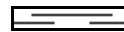


CREWS






Jerry Davidson, Toolpusher
Josh Holloway, Days
Michael Cavender, Evening
Edward Raney, Morning

ROCK TYPES

 Anhy
 Bent
 Brec
 Cht
 Clyst
 Coal

 Congl
 Sdy dolo
 Shy dolo
 Dol
 Gyp
 Sdy lmst

 Lmst
 Mrlst
 Salt
 Shale
 Sltst
 Ss

 Black sh
 Gry sh
 Shale
 Shyslts
 Sltys

ACCESSORIES

MINERAL

- Anhy
- Arg
- Bent
- Bit
- Brecfrag
- Calc
- Carb
- Chtdk
- Chtlt
- Dol
- Ferrpel
- Ferr
- Glau
- Gyp
- Marl
- Nodule
- Phos
- Pyr
- Salt
- Sandy
- Silt

- Chlorite
- Dol
- Sand
- Slty

FOSSIL

- Algae
- Amph
- Belm
- Bioclst
- Brach
- Bryozoa
- Cephal
- Coral
- Crin
- Echin
- Fish
- Foram
- Fossil
- Gastro
- Oolite
- Ostra

- Pelec
- Pellet
- Pisolite
- Plant
- Strom
- Fuss
- Oomoldic

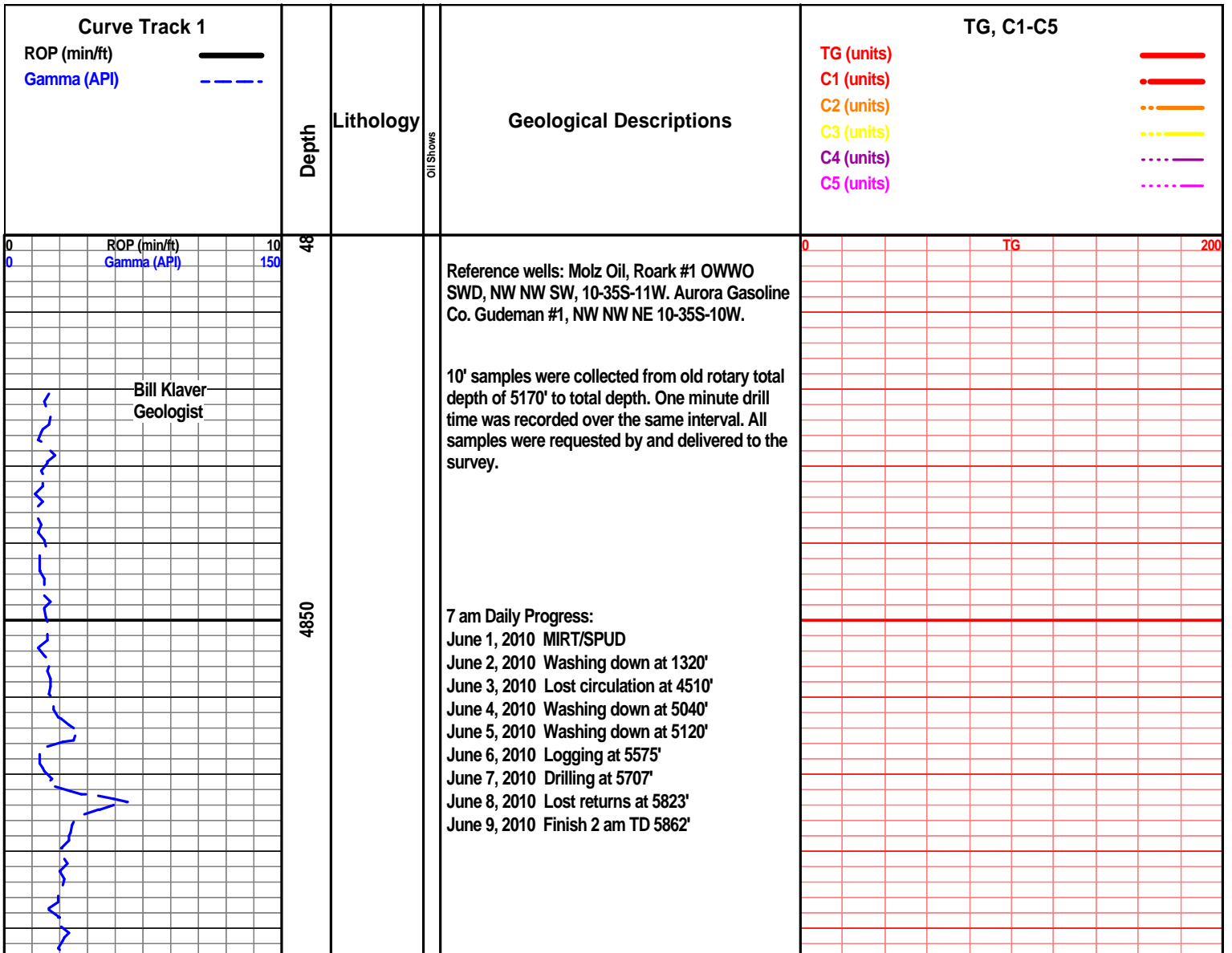
STRINGER

- Anhy
- Arg
- Bent
- Coal
- Dol
- Gyp
- Ls
- Mrst
- Slststrg
- Ssststrg
- Carbsh
- Clystn
- Dol

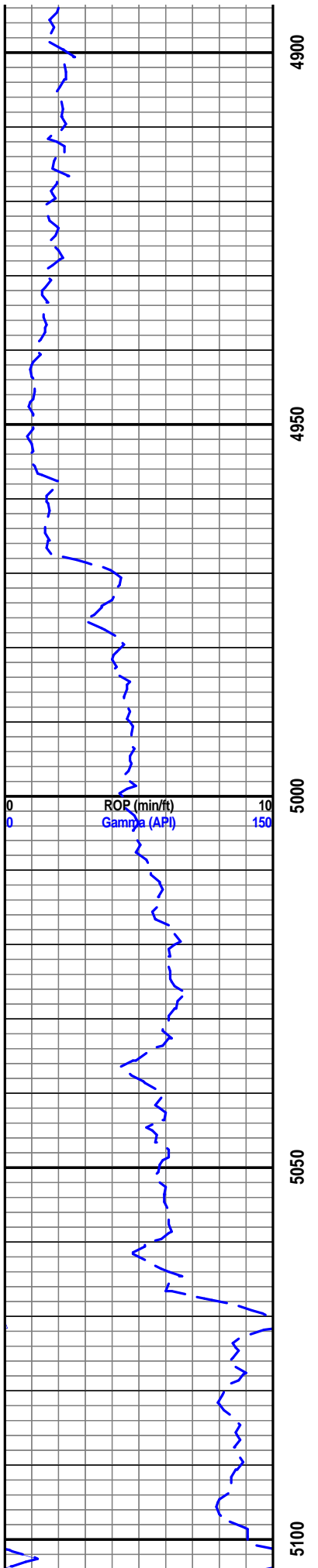
- Grysh
- Gryslt
- Lms
- Sandylms
- Sh
- Slststn

TEXTURE

- Boundst
- Chalky
- Cryxln
- Earthy
- Finexln
- Grainst
- Lithogr
- Microxln
- Mudst
- Packst
- Wackest

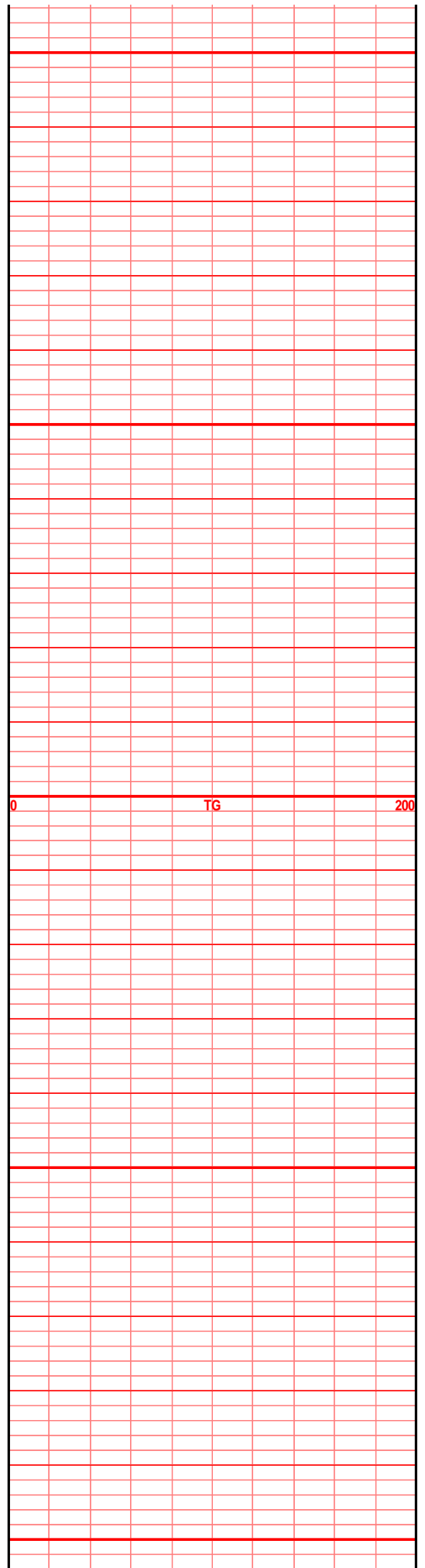


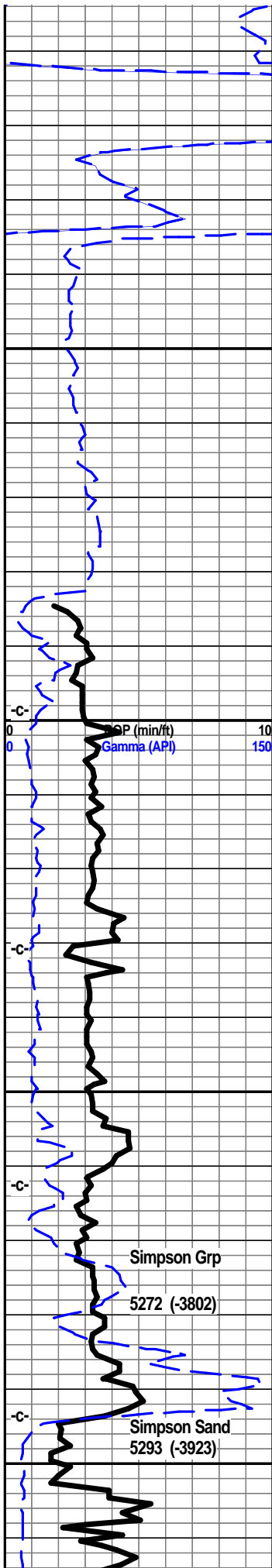
Bill Klaver
Geologist



E-Log Tops:

- Herington 1846 (-476)
- Onaga 2698 (-1328)
- Wabaunsee 2763 (-1393)
- LeCompton 3478 (-2108)
- Kanwaka 3500 (-2130)
- Elgin Sand 3513 (-2143)
- Heebner 3742 (-2372)
- Toronto 3753 (-2383)
- Douglas Grp 3777 (-2407)
- Haskell 3992 (-2622)
- Stalnaker 4053 (-2683)
- Quindaro 4303 (-2933)
- KC 'Iola' 4334 (-2964)
- KC 'Dennis' 4424 (-3054)
- Stark Shale 4457 (-3087)
- KC 'Swope' 4473 (-3103)
- Hushpuckney 4492 (-3122)
- KC 'Hertha' 4505 (-3135)
- B/Kansas City 4544 (-3174)
- Pawnee 4654 (-3284)
- Cherokee Grp 4698 (-3328)
- Mississippi 4780 (-3410)
- C3 4780 (-3410)
- C2A 4793 (-3423)
- C2 4858 (-3488)
- C1 4956 (-3586)
- Osage 5012 (-3642)
- Kinderhook 5045 (-3675)
- Woodford 5090 (-3720)
- Maquoketa 5114 (-3744)
- Viola 5162 (-3792)
- Simpson Grp 5252 (-3882)
- Wilcox Sand 5275 (-3905)
- McLish Shi 5326 (-3956)
- McLish Sand 5427 (-4057)
- Arbuckle 5462 (-4092)





5150

5200

5250

5300



5200' spl was junk

lst wht off wht f sli med xln blkly ang flky pcs, tr sub chlky foss frags ool, tr lt brn stain gas bubs, chrt wht shrp frsh foss

lst wht off wht, tr gry tint, f sli med xln blkly flky tr sub chlky tr foss frags, chrt wht shrp frsh foss

lst tr dolo, wht tan tr gry tint f xln blkly ang dns hrd, chrt dull tan shrp frsh foss opa

lst tr dolo off wht tan tr lt gry, f xln blkly dns ang hrd tr foss mic foss, chrt tan dull gry tan shrp frsh foss opa

lst tr dolo, wht tan tr lt gry f xln blkly ang hrd dns chrty, chrt dull tan gry shrp frsh foss opa

lst off wht lt gry tan f vf xln blkly ang hrd dns micro foss, chrty, chrt dull tan/gry shrp frsh blkly opa

lst/dolo crm tan f vf xln dns hrd blkly tr foss, chrty, chrt dull tan gry shrp frsh

shl gry gry/green silty, slick grsy gritty, lst tan lt brn vf xln blkly ang hrd dns chrty

shl gry gry green silty, tr glau, flood of Viola wht flky lst, chrt wht shrp frsh

shl green lt teal green, silty gritty, fn, clr snd grn inclu, tr sst gry green vf grnd sub rded, prly srted, w/cem, silic xln fill hvy clay/green shl fill

sst clr wht tan clstrs, f grnd sub ang/sub rded grns, prlty srted sub fria to tite, w/cem, dolo in prt, tr clay fill, pyritic fill

sst wht clr lt gry clstrs f grnd sub rded, tr sub ang, fairly srted, sub fria to tite, tr fria, tr dolo, tr dead flky stain, tr gas bubs

Old TD 5170'
Wash Down TD
5184'
Friday 3 pm
June 4, 2010

Add Extractor

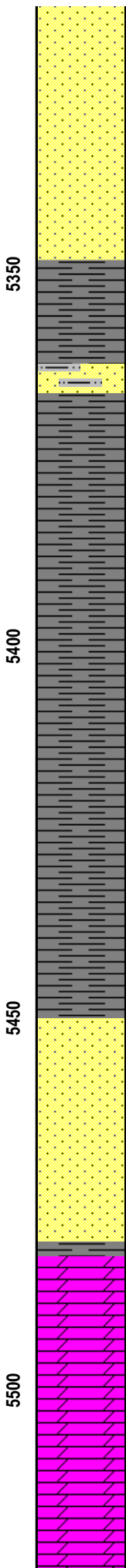
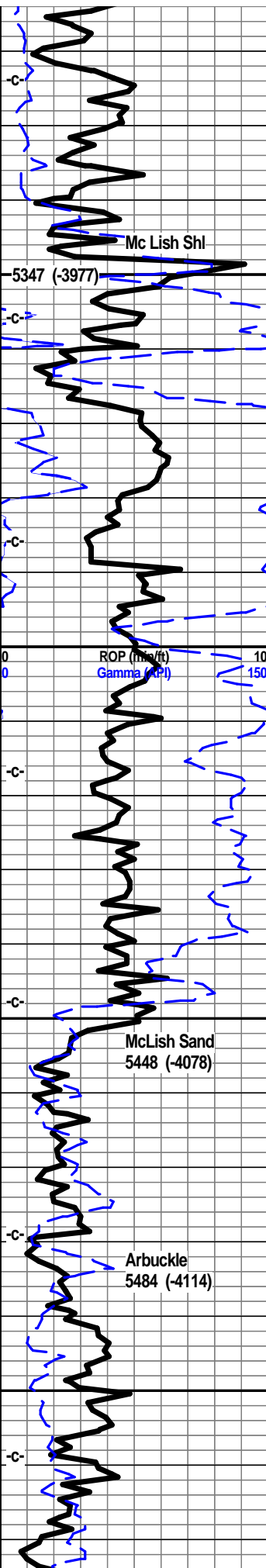
wt. 8.9 vis. 48
lcm. 24# bbl

wt. 9.0 vis. 46
lcm. 22# bbl

TG

200

12:01 am 5320'
Saturday
June 5, 2010



sst clr wth clstrs, f grnd, sub rded, tr sub ang, w/srtd, sub fria, w/cem, mstly hrd blkly ang clstrs, tr dolo, tr dead blk flky stain

aa, poor spl, mstly lcm

sst wht clr tr tan clstrs, f grnd sub rded tr ang, w/srtd, w/cem to sub fria, blkly clstrs, tr clay/min fill, tr dolo

shl gry green silty sndy gritty, sst aa

sst wht lt green clstrs vf grnd sub ang tr rded, w/srtd, blkly hrd tite, glau, shl drk gry/green silty sndy

shl gry green, teal green silty sndy gritty, sst aa, poor spls. msly lcm

shl green silty sndy gritty, sst aa

shl gry green teal green silty sndy, grsy wxy

shl gry green teal green silty sndy gritty pyritic beds, grsy wxy, slick

shl drk gry green silty sndy gritty, tr sst green fn grnd sub ang grns hvy glau clay fill

shl gry gry/green silty sndy gritty, sst gry tan vf grnd sug ang blkly ang tite clstrs, glau

aa, shls gry drk gry green silty sndy gritty, glau, sst gry tan clstrs fn grnd sub ang blkly ang tite clstrs glau

shl gry med gry/green silty sndy gritty, snd grn inclu, pyritic, glau

shl aa, sst tan gry clstrs, f vf grnd sub ang, w/srtd sub fria to tite, blkly ang shrp clstrs, tr glau, tr pyritic fill, min fill

sst wht clr and gry clstrs, f grnd sub ang tr sub rded, w/srtd, tr prly srtd, sub fria to tite, glau, tr min fill, mstly w/cem, silic cem, tr vit, tr dolo, msly blkly ang hrd clstrs. abun loose clr rded fn grnd grains in spl tray

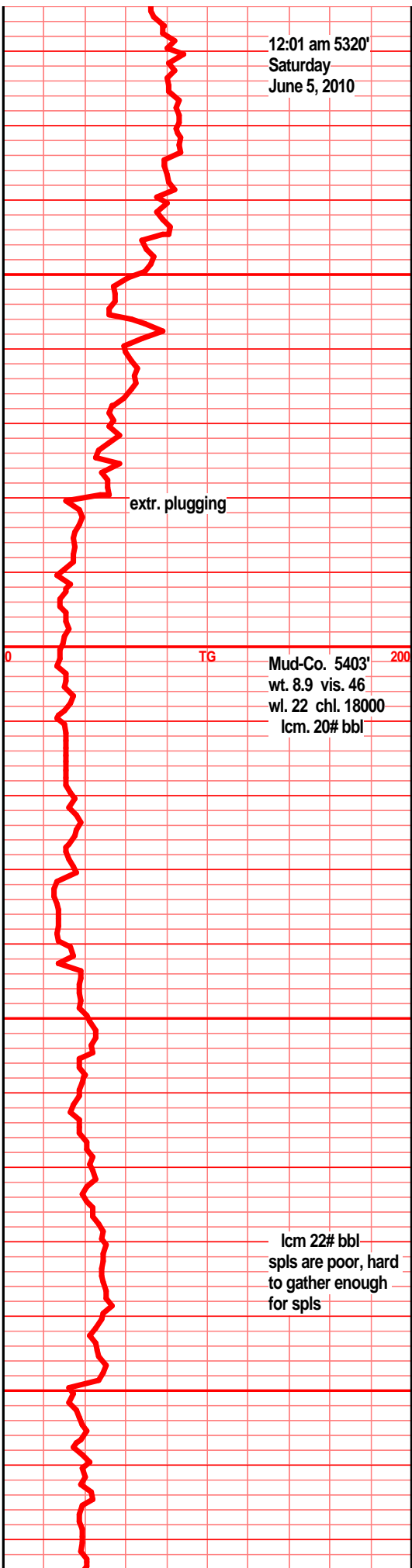
dolo tan buff lt brn f vf xln blkly ang gran tr sucr text, tr sndy

dolo tan buff lt brn f vf xln dns hrd blkly ang gran tr sucr text, tr mic foss, inter xln por

dolo tan buff brn f vf xln gran dns blkly hrd tr sucr text, vis inter xln por

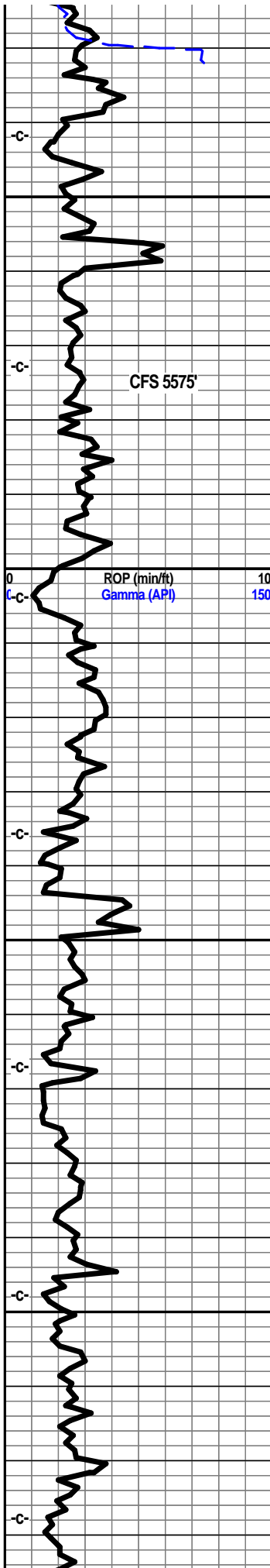
dolo tan buff brn f vf xln gran blkly ang dns hrd, tr sucr text, inter xln por

dolo crm buff tan f xln gran blkly ang pcs, fair inter xln por, tr sucr text tr micro foss



Mud-Co. 5403'
wt. 8.9 vis. 46
wl. 22 chl. 18000
lcm. 20# bbl

lcm 22# bbl
spls are poor, hard
to gather enough
for spls

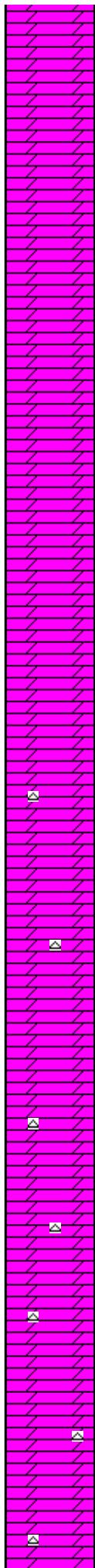


5550

5600

5650

5700



dolo crm buff lt brn f vf xln dns hrd blkly ang gran sucr in prt tr nodular, inter xln por tr mic foss frags

dolo tan off wht buff f vf xln dns hrd blkly gran sli sucr, micro foss frags, tr sndy gritty, vis inter xln por

dolo crm buff lt brn f vf xln gran blkly ang hrd, sli sucr text, tr foss frags, fair inter xln por

dolo tan buff brn f vf xln blkly ang dns hrd tr foss, sucr text in prt, inter xln por tr nodular (small)

dolo tan buff lt brn f xln gran sucr text, gd vis inter xln por,

dolo wht tan lt brn f vf xln blkly ang sucr sndy blkly dns

dolo tan buff lt brn, tr drkr brn f vf xln blkly ang dns hrd pcs, sli sucr/silic text, f/gd inter xln por

dolo tan buff lt brn tr drkr brn f vf xln hrd gran ang blkly pcs, silic sli sucr text, f/gd inter xln por

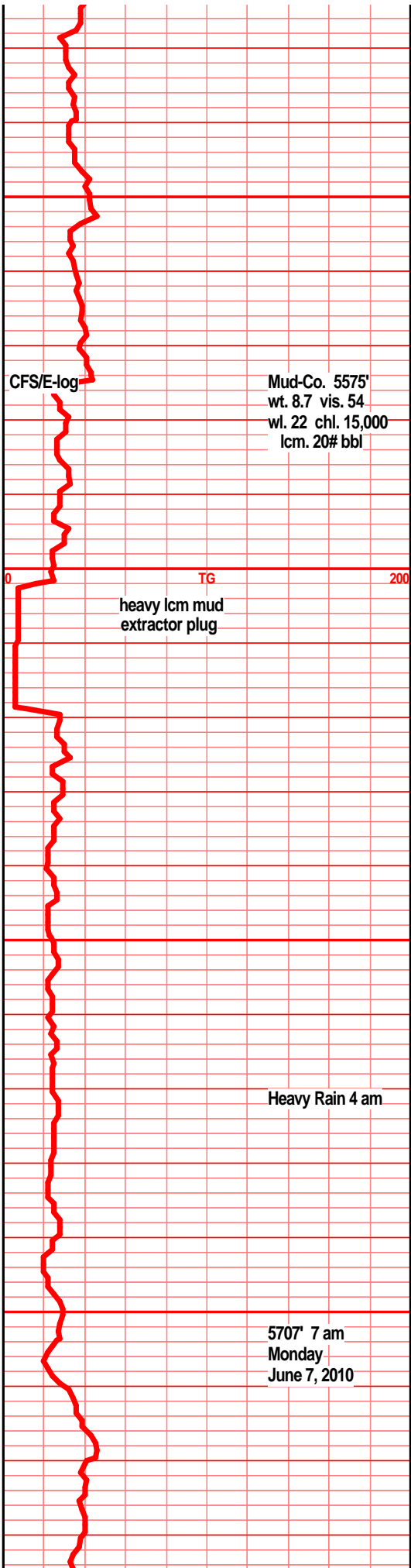
dolo lt tan off wht drk tan f vf xln gran blkly ang pcs, sndy sucr text, tr sndy, inter xln por

dolo lt tan off wht drkr tan f vf xln gran ang blkly pcs, snd sucr text, sucr silic text, vis inter xln por,

dolo tan buff f vf xln gran ang blkly pcs, sucr text, small nod text, inter xln por, tr small rhom xstls

dolo off wht tan buff f xln gran blkly ang dns pcs, sucr silic text, small nodular rhom xstls, inter xln por, tr chrt wht shrp frsh

dolo off wht tan buff, fvf xln gran blkly ang hrd, tr sucr sndy text, fair vis inter xln por, tr foss frags, tr xln edge, tr rhom xln, tr wht opag chrt

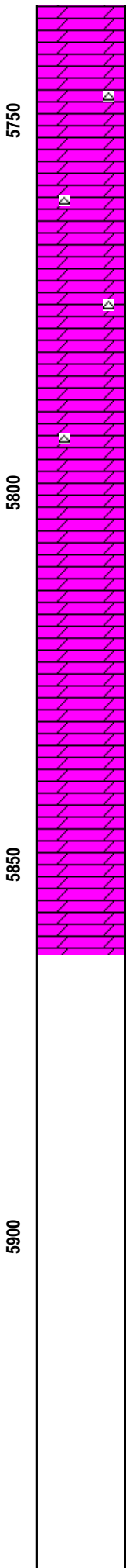
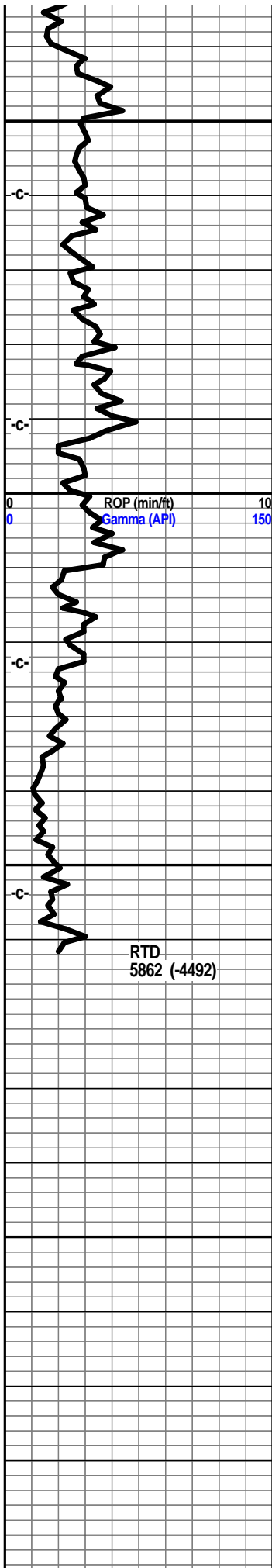


Mud-Co. 5575'
wt. 8.7 vis. 54
wl. 22 chl. 15,000
lcm. 20# bbl

TG
heavy lcm mud extractor plug

Heavy Rain 4 am

5707\'' 7 am
Monday
June 7, 2010



dolo off wht tan buff f xln gran blkly ang sm rhom
xln text, silic text, f/gd inter xln por, chrt wht
opaq shrp frsh

dolo off wht buff tan f xln fnly rhom xln test, silic
in prt, blkly ang pcs, f/gd inter xln por, chrt wht
shrp opa

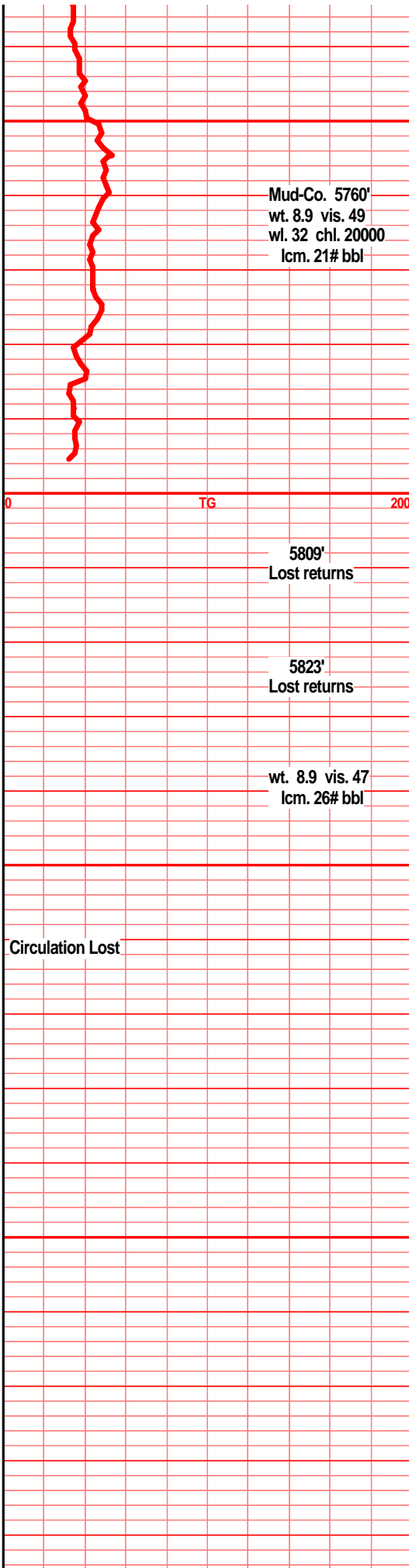
dolo tan buff off wht f tr sli med xln, small rhom
xln text, silic, tr suc text, blkly ang pcs, f/gd inter
por, pyritic min dep, chrt wht shrp frsh opa

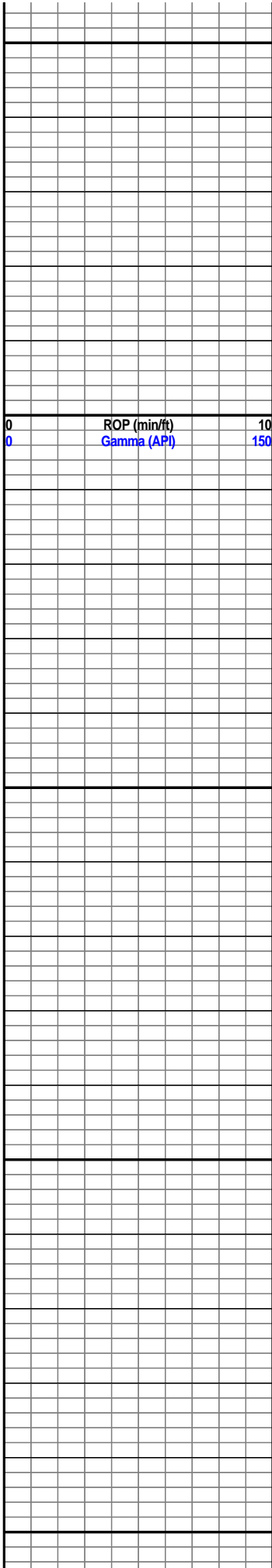
Sample of no value, losing fluid and lost returns

Minimal returns.....

Estimate total loss of 1700 bbls.

E-log tops were 21' high to rotary depths, pipe
strap was .20' short to the board. No obvious
errors could be found when the board was
re-added. Original rotary and loggers total depth
when drilled in 1978 was 5170'. Val Energy Rig #3
wash down total depth was 5184'. 21' drilling
depth difference remains a mystery.





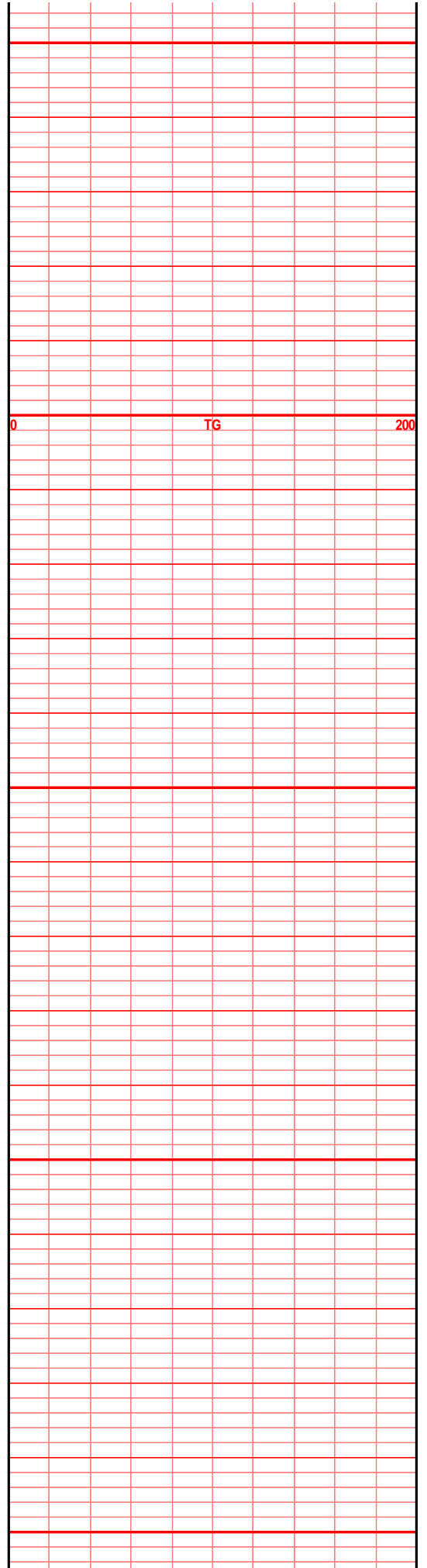
5950

6000

6050

6100

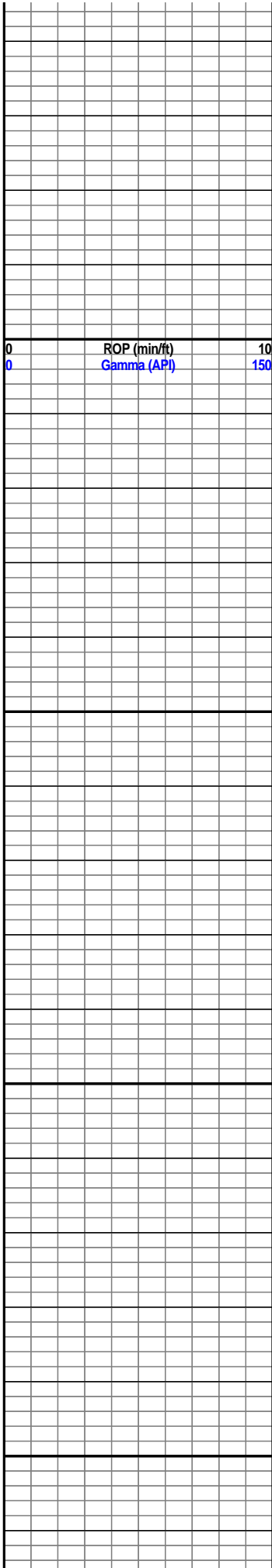
6150



0

TG

200

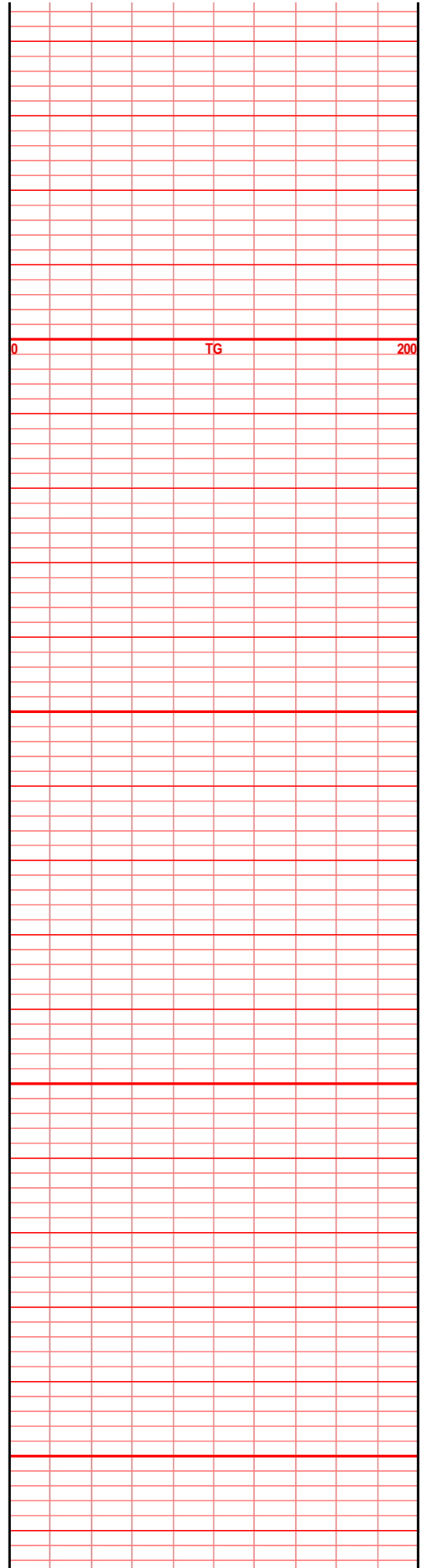


6200

6250

6300

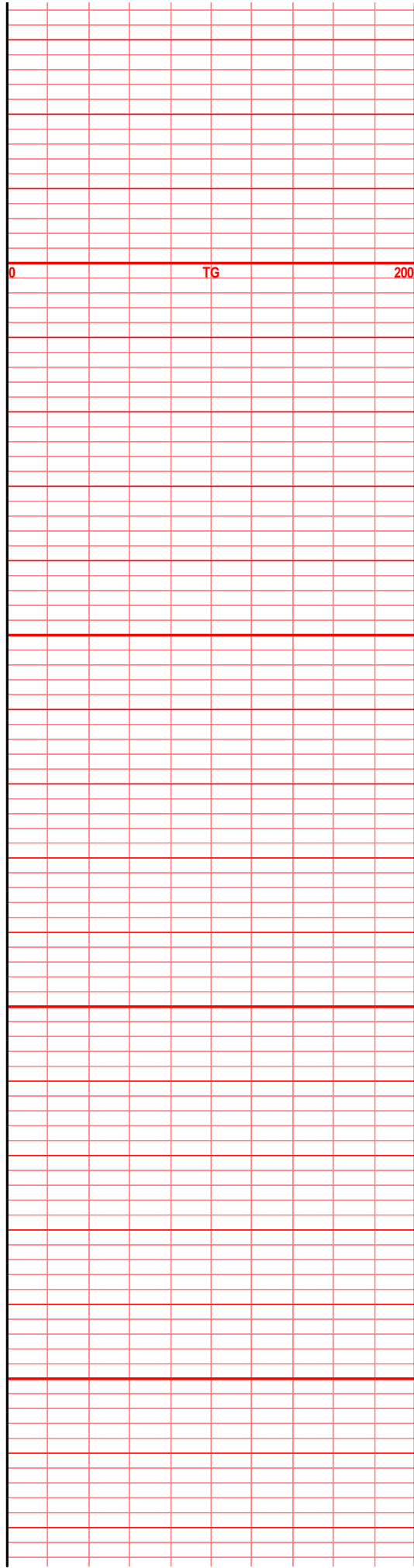
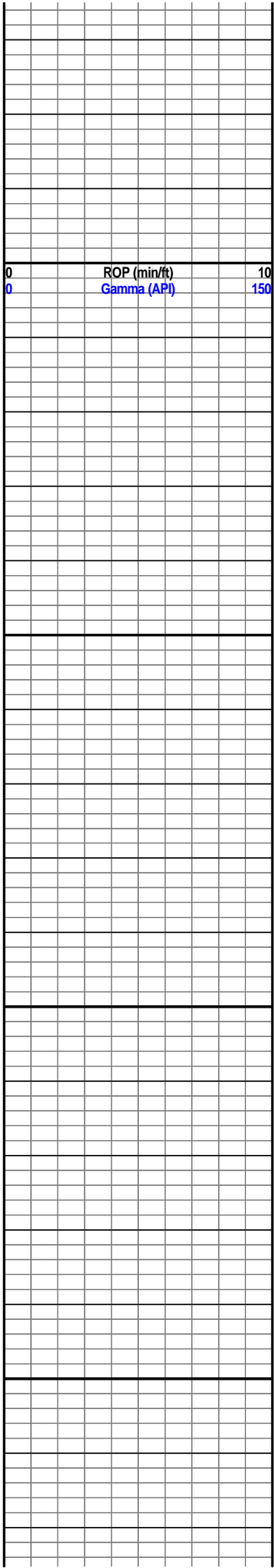
6350

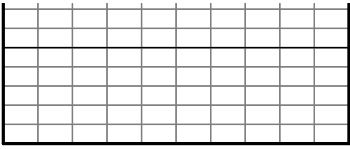


0

TG

200





00

